

The *first* EDITION

Southland District Council Newsletter *November 2006*

DISCOVER FIORDLAND - *from dream to reality*

Mayor Frana Cardno was quick to congratulate all those who helped make sure that the \$12.3 million Discover Fiordland development in Te Anau is going ahead.

“Discover Fiordland International Wilderness Centre will provide New Zealand with an iconic attraction aiming to highlight the magnificence of Fiordland’s climate, waters, diverse flora and fauna, geology, mythology and human habitation”.

The centre will be designed to tell Fiordland’s unique story through a leading edge interactive interpretation centre. It will also include an enclosure featuring endangered birds and retail facilities. It is expected to become a hub point for tour parties, coaches and individuals travelling to Milford Sound. It is also expected to add an extra 27 jobs to Te Anau.

Mrs Cardno said, “We must show thanks to the many people and organisations that have worked tirelessly to make this a reality. I wish to give special thanks to the Department of Conservation (DOC), the Community Trust of Southland and of course we cannot forget the tremendous \$2 million pledged by NZ Trade and Enterprise today”.

“I wish to acknowledge the work of the late Bill Neilson along with Penny Hutchins and the present Fiordland Museum Trust chairman Warwick Cambridge and of course Real Journeys who have shown their



Mayor Frana Cardno and Prime Minister Helen Clark at the Discover Fiordland launch

huge commitment towards tourism in Fiordland.

“We must be so grateful for all the hard work done by Venture Southland’s Steve Canny and Jason Baird.

“This all just goes to show a part of the huge economic benefit that Venture Southland has brought to our province.

“It’s just amazing the Community Trust of Southland is providing a \$3.7 million interest free loan to anchor the project’s future”.

The initiative should boost New Zealand’s GDP by \$59 million in its first four years of operation and \$107 million in its first decade. It is expected that the complex, which

will be built on 15 hectares of land provided by DOC, will take about two years to build and it is hoped that it will open in November 2008”, she said.

INSIDE THIS ISSUE

Mayor	2
CEO	3
Annual Report - Highlights	4
Annual Report - Financial Overview	5
Annual Report - Financial Results	6
Annual Report - Income	7
Annual Report - Expenditure	8
Annual Report - Performance	9
Annual Report	10 - 12
Annual Report - Elected Members	13
Annual Report - Auditors Report	14
First Edition Community News	15
Councillors' Comments	16
Building	17
Community	18
Book Bus Timetable	19
Road Safety	20

A YEAR IN REVIEW

A Summary of the Southland District Council's Annual Report for the Year Ended 30 June 2006



MAYOR'S MESSAGE

Another busy year for Council and its staff with such a vast and beautiful District to work and play in.

I must say that I am really proud of all staff and our Councillors for producing our first fully compliant Long Term Council Community Plan. The amount of work and dedication that went into this document was quite astonishing and the plaudits that we received from many corners, including the Office of the Auditor General, augurs well for future efforts. The plan, which built on our past planning and understanding of what the Southland community wants from its Council, saw some significant changes to the way that Council budgets, including some highly innovative work by our IT team and also included the involvement of our local Community Boards and Community Development Area Sub-committees.

We also saw the preparation of Activity Plans for each of Council's significant activities, which supports this plan. All this hard work must be reflected in our residents' satisfaction survey, which had an over 90% approval rating with the overall performance of the Council. In addition strong residents' satisfaction continues with Council decision-making, planning and leadership and the way in which Council keeps its residents and ratepayers informed on what is going on.

Meanwhile our libraries continue to have very high satisfaction ratings and I expect with the recent agreement to offer reciprocal membership to other libraries in the Southland Region and South Otago that this will only continue.

It was a very busy year on our roads with around 148 km of roads resealed. In other areas it has also been extremely busy. For the regulatory services a large number of consents were dealt with, including the very difficult one for the wind farm at White Hill. In all,

239 resource consents and 1,047 building consents were processed during the year. Also the Stewart Island District Plan change was successfully implemented and several other District Plan changes were progressed.

Our engineers have been working many hours on new sewerage schemes, which have been put in place at Stewart Island (an extension to the existing scheme) and Gorge Road.

I was very pleased to see in the provisional Census figures that our District has seen its population grow and certain areas such as Te Anau, Manapouri, Riversdale and Riverton have seen strong growth, reflecting Councils experience in these areas. The final population counts will be out in December which will give us an even better idea of what is happening across our District.

During the year we also looked at ways to protect and support our communities with the finalisation of *Our Way Southland Community Outcomes* and the *Coastal Marine Environment Report*. A desire to provide our citizens with the optimum level of leadership is included in the representation review, which is nearing completion, in preparation for next year's local government elections.

Areas we need to work on include processing consents within agreed timeframes, looking at ways to improve water quality and the effectiveness of stormwater removal and Council's response to stormwater problems. We also need to look at public toilets (which are currently under review at the time of writing).

As a Council we are always looking towards the future and we are prepared to stand on our own two feet and do not expect to receive handouts from central government. Having said this we shall continue to lobby for a fair and equitable deal for all our residents and shall let those in Wellington know when we do not agree with their actions. So once again thanks to all those who make our District such a wonderful place to live and lets all continue to strive to maintain and improve on this in the years ahead.

Heena Carcho

CHIEF EXECUTIVE'S REPORT

This report contains the seven community outcomes which were finalised following the completion of the *Our Way Southland* project during the year. These outcomes have assisted Council in focussing on the broader benefits of the services delivered by Council, while ensuring there is no undermining of the importance of the core services such as roading, water, wastewater, building and resource consent management, libraries and the myriad of local services.

The Council is now working on finalising appropriate measures to monitor progress made towards achieving these community outcomes. These measures are being developed in conjunction with a range of other agencies.

A significant highlight of the 2005/2006 year was the presentation of the name "Te Rohe Potae O Murihiku" by Ngāi Tahu in November 2005. This gifting reflects the excellent partnership between Iwi and Council and the name symbolises the role of Council in providing an overarching hat of services for the benefit of our ratepayers and residents, past, present and future.

Growth within the District continues to provide Council with challenges, but it is pleasing to report that Council and staff have risen to these challenges and have performed well above our weight for a Council of this size.

The Local Government Act, the Local Government Rating Act and the Building Act have continued to present changes in Councils working environment as they progressively come into force. This has required the adoption of new approaches, systems and procedures to ensure compliance while not sacrificing customer service. I am pleased to report that Council has adapted to the challenges in a proactive and productive manner.

Its also pleasing to report an increase in net assets of \$113 million as well as a consolidated surplus above expectations (\$10.4 million against a budgeted surplus of \$614,000).

While this surplus is significantly more than expected, it is important that ratepayers realise that this is not a cash surplus. The main factors contributing to the surplus are \$8 million worth of assets, such as roads and pipes, constructed by developers for new subdivisions which were vested with the Council when they were built and show up as income. In addition, revenue from the construction of sewerage schemes was not included in budgets and the associated expenditure is not offset against the revenue in the surplus figure. This revenue is made up of subsidies from the Ministry of Health for the schemes and payments from those connecting. Income from development contributions and sale of Luxmore Subdivision sections were also not budgeted for. All of these factors combine to create a larger than expected surplus. Otherwise, most other core Council activities have come in close to budget.

The District remains very buoyant both economically and socially and recent long-term trends indicate our population decline has at least decreased in rate if not stabilised in number. This Annual Report clearly shows the District has a sound foundation and that Council's infrastructure, upon which our District's well-being is based, is being managed soundly and prudently for the long-term benefit of the District's ratepayers and residents.



I am pleased to present this Annual Report for the 2005/2006 financial year, which reports on the second year of the 2004 - 2014 Long-Term Council Community Plan (LTCCP).

Credit for this solid foundation has to sit with all those that are part of the larger Southland District Council organisation, past and present. This includes the sound and robust political decision making, made by Councillors, Community Boards, Community Development Area Sub-committees and Water Supply Committees, the professional competency of staff in advising and actioning the policies developed through the political system and the ability to make local decisions at local levels continues to provide significant benefits to the ratepayers and residents of Southland.

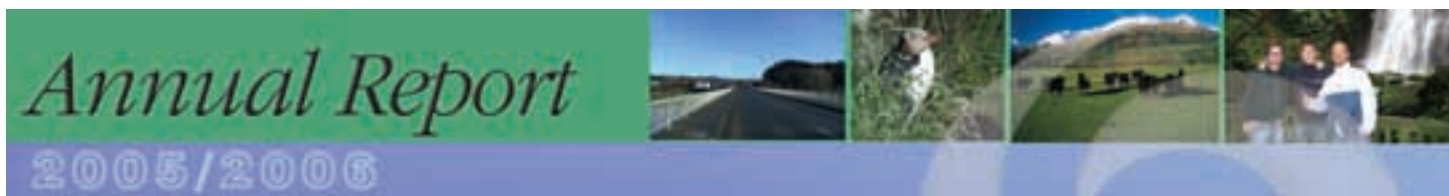
Equally important is the multitude of major achievements throughout the year which are summarised in this report.

They include:

- \$6.7 million invested resealing and widening a total of 163 kilometres of road;
- Progress on the Manapouri Airport establishment;
- Numerous Bylaw reviews;
- Abandoned land sales;
- Preparation of Council's first full LTCCP 2006 - 2016;
- Completion of the Oban sewerage extension;
- Completion of the Taramea Bay and Manapouri foreshore plans;
- Incidental changes to the District Plan; and
- Development of online application forms.

In conclusion I would like to commend all involved including politicians, staff, consultants and contractors for once again achieving an excellent result for Council and its communities.

David Adams



KEY HIGHLIGHTS

- Extension to Stewart Island sewerage scheme and construction of Gorge Road sewerage scheme completed.
- Wallacetown and Tuatapere sewerage schemes successfully obtained subsidy from Ministry of Health.
- 163 kilometres of roads resealed and shape corrected.
- 1,047 building and 239 resource consents processed.
- Two new recycling drop-off centres were built in Mokotua and Lumsden.
- Additional land purchased for the development of the Te Anau Airport Manapouri.
- Preparation and adoption of Long Term Council Community Plan 2006-2016.

WHAT IS THE ANNUAL REPORT

The Council's Annual Report is a formal audited report, published each financial year, which documents the Council's operations during that year, including details of activity performance and financial statements.

The Local Government Act 2002 states that the purposes of the Annual Report are:

- to compare the actual activities and the actual performance of the Council during the year with our intended activities as per the Council's Long Term Council Community Plan and Annual Plan, and
- to promote the Councils accountability to the community for the decisions made throughout the year.

In layman-speak we like to think of the Annual Report as something that tells us and you how well we did against what we said we were going to do, how much it cost to do this, how we paid for it and how our finances look.

Council has well qualified, professional staff who pull together the information in the report.

This information is then checked by Audit New Zealand, who give us their opinion on how responsibly we have managed the ratepayers assets and how accurately we have monitored and reported on our activities.

VISION, MISSION AND GUIDING PRINCIPLE

THE COUNCIL'S VISION FOR THE DISTRICT IS:

"Thriving, healthy communities whose economic, cultural, and social wellbeing and opportunities are supported by excellent infrastructure, services and amenities within a high quality environment"

THE COUNCIL'S MISSION IS:

"Working together for a better Southland"

THE COUNCIL'S GUIDING PRINCIPLE IS:

"People First"

OUTCOMES

The Our Way Southland Community Outcomes Report, which is available from any of the Councils offices, details our communities aspirations and vision for the future and documents what Southlanders think are important outcomes. It also contains a detailed plan of activities and identifies activity leaders responsible for ensuring that these community outcomes are achieved.

The Council has endorsed the community outcomes report and formally adopted the seven community outcomes outlined in it.

SEVEN COMMUNITY OUTCOMES



1. Southland is a great place to live;
2. A diverse economy built from our strengths for growth and prosperity;
3. Safe places in a caring society that is free from crime;
4. We are a healthy people;
5. Strong, effective leadership taking us into the future;
6. A treasured environment which we care for and which supports us now and into the future; and
7. A well-educated and skilled community continually seeking further opportunities to learn.

There are numerous challenges and issues that need to be addressed in order to ensure that the community outcomes as identified and detailed in the community outcomes report are delivered. The Council will use information from the outcomes report as we action the 2006-2016 Long Term Community Plan (LTCCP).

FINANCIAL OVERVIEW

The Summary Annual Report is a precis of the information contained in the full financial Annual Report of Southland District Council for the year ended 30 June 2006.

The financial and non financial information has been extracted from the audited full Annual Report. An unqualified audit was signed on 25 October 2006. As noted in their attached report Audit New Zealand have reviewed this Summary Report for consistency with the Annual Report and has confirmed that it fairly and consistently represents the major matters dealt with in the full Annual Report for the year ended June 2006. A Summary Report cannot be expected to provide as complete an understanding of the financial and non financial performance of Southland District Council as the Annual Report.

A full copy of the Annual Report is available from any Southland District Council office or library or visit our website www.southlanddc.govt.nz.

	Actual 2005/2006 \$000s	Budget 2005/2006 \$000s	Actual 2004/2005 \$000s
Revenue Earned	57,594	40,868	50,881
Total Expenditure	47,226	40,254	45,298
Net Surplus (before taxation)	10,368	614	5,583
Taxation	58	-	(12)
Net Surplus (after taxation)	10,426	614	5,571
Equity at Start of the Period	966,271	937,752	933,669
Movement in Asset Revaluation Reserve	102,498	-	27,031
Net Surplus/(Deficit) for the period	10,426	614	5,571
Equity at the End of the Period	1,079,195	938,366	966,271
Current Assets	24,522	23,169	20,802
Non-Current Assets	1,061,649	925,288	953,629
Total Assets	1,086,171	948,457	974,431
Current Liabilities	5,747	6,103	6,782
Non-Current Liabilities	1,229	3,988	1,378
Total Liabilities	6,976	10,091	8,160
Net Assets (Assets less Liabilities)	1,079,195	938,366	966,271
Operating Cashflow	15,779	11,087	17,070
Investing Cashflow	(15,674)	(10,756)	(16,701)
Financing Cashflow	(18)	1,279	3
Net Cashflow	87	1,610	372

FINANCIAL RESULTS

Council has reported a consolidated net surplus after taxation of \$10.4 million for the year to 30 June 2006 compared with a budgeted surplus of \$614,000.

The key factors producing the difference between the budgeted surplus and the actual surplus are:

• Unbudgeted revenue from assets vested to Council by developers	\$8.0 million
• Surplus from sale of Luxmore Subdivision sections	\$1.1 million
• Unbudgeted income from development contributions	\$1.5 million
• Unbudgeted revenues received for sewerage schemes (Stewart Island and Gorge Road)	\$2.3 million
• An increase in interest received over budget	\$0.3 million
• A change in the classification of roading expenditure from maintenance to capital expenditure	\$2.8 million
• A decrease in the forestry revaluation	(\$0.6 million)
• An increase in depreciation above budget	(\$6.6 million)

Net Assets

Overall, total net assets have increased by \$113 million of which \$111 million is the result of the increase in our roading revaluation. The main reason that the value of Southland roads have increased is due to a change in how these are valued.

For the urban roads the allowance for formation has been extended to cover the full width of the road reserve greatly increasing the quantities of formation valued. Significant increases also occurred in the sealed pavement surface and sealed pavement structure values because of increases in the unit rates. The unit rate increases are due to bitumen and construction cost increases. The valuation also increased because of the value of roading assets vested in the Council from subdivisions and development.

Cash Flow

Cash from operating activities has increased \$4.7 million from what was budgeted.

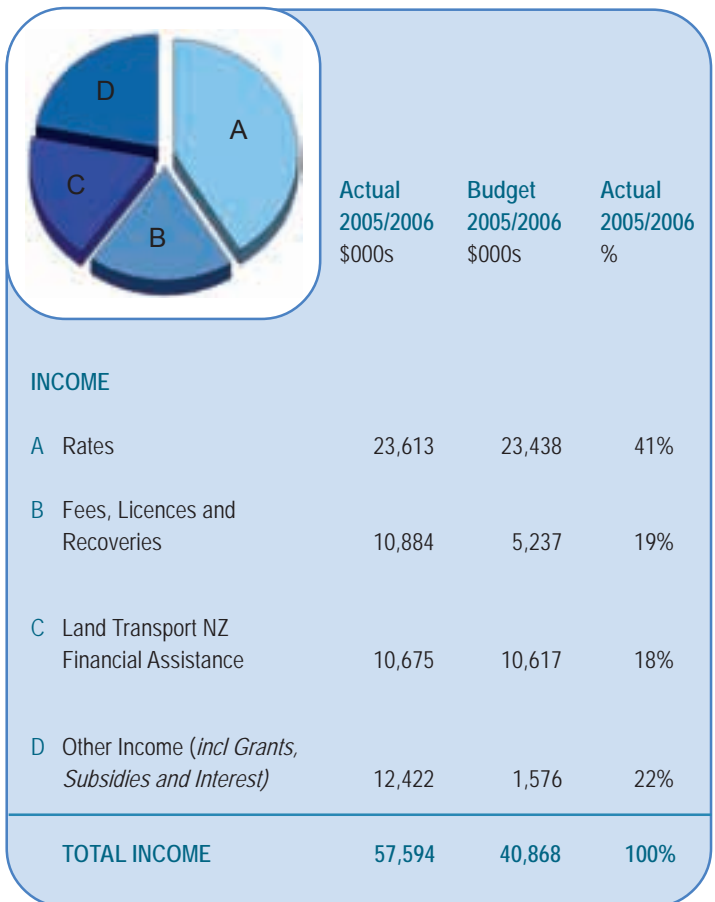
This is made up of unbudgeted net proceeds received from the sale of sections in the Luxmore subdivision (\$1.1 million), monies received from developers for development contributions (\$1.5 million) and revenues received from the Ministry of Health and those ratepayers connecting to the sewerage schemes at Gorge Road and Stewart Island (\$2.3 million).

Cash transferred to investing activities has increased \$4.9 million from what was budgeted. This is as a result of additional funds being received from the sale of Luxmore Subdivision sections and development contributions. Additional unbudgeted capital expenditure was also incurred for the Gorge Road and Stewart Island sewerage schemes.

Cash from financing activities decreased \$1.3 million from what was budgeted. This is due to internal funding of projects which were originally budgeted to be funded from external sources. This internal funding was largely for the Councils 1/6 contribution to the Gorge Road and Stewart Island sewerage schemes.

Our Income and Spending for the Year Ended 30 June 2006

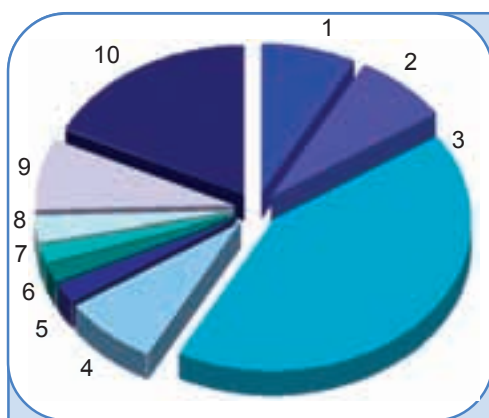
The following tables and graphs summarise Council's performance for the year ended 30 June 2006.



INCOME

Income increased around \$17 million over the budget.

The main reasons for this increased income are the result of the sale of Luxmore Subdivision sections (\$2.2 million), funding for the sewerage schemes (\$2.3 million), income from development contributions from developers (\$1.5 million), vested assets (\$8 million), and the 42% share of Venture Southland's income (\$1.3 million), not included in the budget. These factors combine to make up the majority of the higher than expected income.



OPERATING EXPENDITURE

	Actual 2005/2006 \$000s	Budget 2005/2006 \$000s	Actual 2005/2006 %
1 Governance and Planning	4,141	3,837	8%
2 Development	4,090	2,724	8%
3 Rooding and Bridging	20,116	18,591	43%
4 Waste Management	3,693	3,876	8%
5 Civil Defence and Rural Fire	501	454	1%
6 Work Schemes and Community Housing	336	455	1%
7 Library Services	946	1,034	2%
8 Regulatory Services	1,325	1,317	3%
9 Commercial Activities	3,675	1,860	8%
10 Local Services	8,402	6,106	18%
TOTAL OPERATING EXPENDITURE	47,225	40,254	100%

Operating Expenditure

Total operating expenditure increased \$7 million compared to budget.

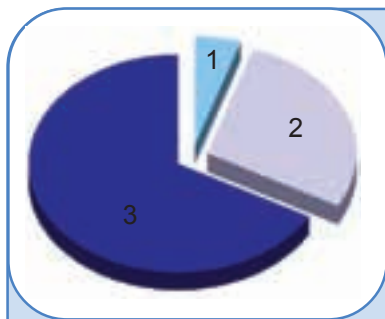
The main reasons for this increase were the consolidation of the Council's 42% share of Venture Southland's expenditure which was not budgeted and an increase in depreciation.

These factors increased operating expenditure by \$1.5 million and \$6.6 million respectively. However a change in the classification of rooding expenditure from maintenance to capital expenditure reduced operating expenditure by \$2.8 million.

CAPITAL PROJECT EXPENDITURE

Capital expenditure increased \$9.7 million over budget. This was largely due to \$8 million of assets being vested to the Council by developers and the effect of reclassifying roading expenditure from maintenance to capital expenditure (\$2.8 million).

Combined, these factors created an increase in capital expenditure of \$10.8 million, but were offset by a number of capital projects that were either not undertaken or not completed during the year.



CAPITAL PROJECT EXPENDITURE

1	Other (incl Library, Waste Management)	1,115	840	5%
2	Local	6,173	3,667	28%
3	Roading	15,104	8,150	67%
TOTAL CAPITAL EXPENDITURE		22,393	12,657	100%

Changes in Accounting Policies

There have been no changes in accounting policies since the date of the last audited financial statements. All policies have been applied on a basis consistent with the prior year.

HOW DID WE PERFORM?

The Council has three main ways of measuring how well we performed against what we had planned to do:

- 1 Specific performance measures against each objective or target from each of the District or local service activities set out in the Long Term Council Community Plan.
- 2 Council's financial performance measuring costs against budgets, and
- 3 Our annual residents' satisfaction survey.

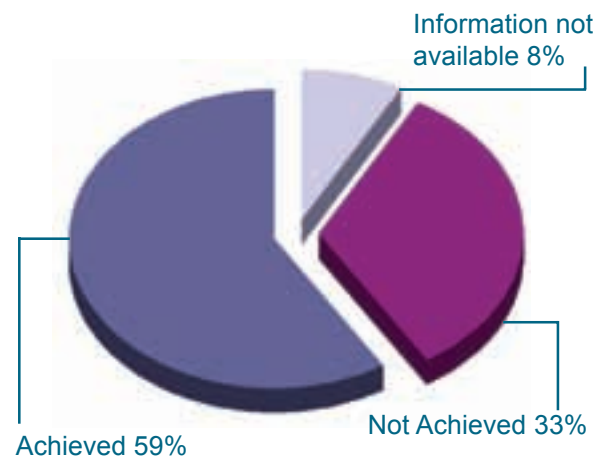
Specific Performance Measures

The Council met 61 of the 103 specific targets that it set out to achieve for the year. The full Annual Report details each specific target and measurement and explains the reasons why a particular target may not have been achieved. This is an area that the Council is constantly working on to improve.

In addition to the targets, the Council also completed two major local projects concerning sewerage; one at Stewart Island and the other at Gorge Road. A number of projects originally planned for the Annual Plan were not completed due to either delays outside of the Council's control or changing priorities coming out the development of the Council's LTCCP 2006-2016 which re-examined in particular the water, sewerage and stormwater upgrades for the next ten years.

Specific projects that were delayed included the construction of a new sewerage scheme in Tuatapere, the upgrade of sewerage treatment systems in Lumsden and Riverton, and

Percentage of targets achieved 2005/2006

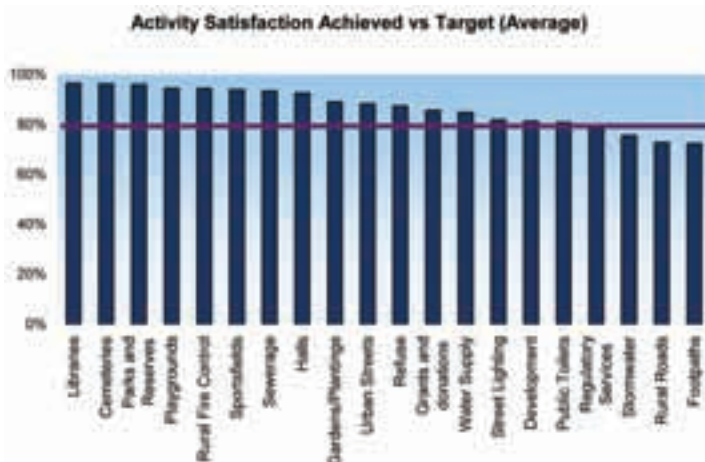


the upgrade of stormwater treatment in Wyndham which has now been replaced with a project to construct a new sewerage scheme in the township.

Residents' Satisfaction Survey

If our yearly residents' satisfaction survey is anything to go by, the Council has had another successful year with residents' rating their overall satisfaction with the Council's performance at 90.2% - putting it amongst the highest in the country.

Three areas that Council is actively trying to improve are our resource management service, the maintenance of our extensive network of gravel roads, public toilet cleanliness and stormwater removal.



COUNCIL SERVICE	SATISFIED
Libraries*	96.4%
Cemeteries	96.2%
Parks and Reserves*	95.9%
Playgrounds*	94.5%
Rural Fire Control	94.4%
Sportsfields*	93.8%
Sewerage*	93.3%
Community Halls	92.5%
Garden/Street Plantings*	89.1%
Urban Streets*	88.4%
Refuse ¹	87.4%
Council grants and donations	85.6%
Water Supply*	84.8%
Street Lighting	81.8%
Development (Community, Enterprise, Tourism)*	81.3%
Public Toilets*	80.8%
Regulatory Services*	78.4%
Stormwater*	75.6%
Rural Roads (sealed and unsealed)*	72.7%
Footpaths	72.3%

* Average of results for different aspects of service.
¹ Average of Transfer Stations, Greenwaste - Only Sites, Wheelie Bins and Recycling Drop-Off Centres.

Roading

Roading continues to be our most significant activity, both in terms of expenditure and the impact it has on our residents' and ratepayers'.

Results from our yearly residents' satisfaction survey showed that 87% of people agreed that the District roading network is appropriate for their travel needs. Resident satisfaction with the safety and effectiveness of the roading network was 92% for urban streets and 85% for rural roads. 97% of requests for service relating to roading lodged in the Council's Worksmart system were resolved within three months.

The condition of the District's roads has remained steady over the last year. Contractors achieved the programmed quantities of programmed metal

maintenance on gravel roads but not the programmed area-wide pavement treatment or drainage maintenance. However over the five years of the contract, contractors' achievements meet contract requirements.



During the year the Council carried out over 163 kilometres of reseals, area wide pavement treatment and seal widening on the District roads. This work made up a significant portion of the Council's expenditure at just under \$6.7 million. This comes from a total subsidised roading programme of \$18.6 million.

Representation and Advocacy

Resident satisfaction with the overall performance of the Council remain high at 90% (slightly down on last year).

The majority of residents (84%) agreed that the Council represents the interests of Southland District Residents. 85.6% of people were satisfied with Council decision-making, planning and leadership, and

86.6% of residents satisfied with Community Board decision-making, planning and leadership.

One by-election was held to fill a vacancy on the Lumsden Community Board. In addition another vacancy on the Edendale Community Board was filled, although a by-election was not required as only one nomination was received.

Waste Management

The waste collection system incorporates kerbside rubbish collection (through a wheelie bin service), transfer stations and recycling drop-off centres.

There was a 95.8% satisfaction rating for wheelie bin collection and 85.6% of residents were satisfied with the location of transfer stations.

The solid waste management system overall received a resident satisfaction rating of over 84%. Council had planned to buy back transfer stations in Te Anau, Otautau, Riverton and Wyndale from the contractor. The purchase has been delayed while their assets are brought up to an agreed standard. The Council is now planning to purchase these assets in 2006/2007.

Drop-off centres for recyclables were also established in Mokotua and Lumsden where there is no transfer station. 87.1% of residents agreed that they were provided with opportunities for recycling. Several waste minimisation promotions and activities



were undertaken including visits to 11 schools to cover topics such as recycling, worm farming, paper making and zero waste.

Venture Southland

The Council has a 42% interest in Venture Southland, a joint initiative of the Southland District Council, Invercargill City Council and Gore District Council.

Venture Southland's role is to undertake community and economic development activities on behalf of the councils for an initial period of five years, of which this was year five. Council provided Venture Southland with \$1.7 million in funding during the financial year.

Venture Southland achieved expected results for 255 of the 262 projects that it had planned to do during the year,

and also completed a further 11 additional projects. Venture Southland prepares its own Annual Report which is audited by Audit New Zealand. The Venture Southland report sets out in detail the results for the year and projects undertaken. A copy of the Venture Southland report is available at any Council office.

A review of Venture Southland's activities and funding was also progressed during the year. The Council is still working through the results of this review with a view to identifying agreed levels of service between the Council and Venture and funding required for these activities.

Strategy and Communication

The Council prepared its first fully compliant Long-Term Council Community Plan for the ten years from 2006 to 2016.

The plan was a significant undertaking for the Council and involved the preparation of Activity Management Plans for all activities and ten-year budgets as well as reviewing the levels of services and performance targets for activities. The Plan received a record 154 submissions and was adopted by Council on the 28 June 2006.

94% of residents were satisfied with how well they had been kept informed of the Council's activities during the year and 82% were satisfied with the level of consultation that the Council had undertaken with the community over important issues. The Council's *First Edition* newsletter continued to be a key communication tool for the Council with over 90% of residents saying that they have read the newsletter during the year.

Resource Management

This year was a very busy one for the Council's Resource Planning Committee and Resource Planning department staff with 232 non-notified consents and seven notified/limited notification consents processed during the year.

These consent applications continue to be complex, particularly for developments in the Te Anau Basin and around coastal parts of the District.

Eight Environment Court appeals were received during the year, two of these were in relation to the proposal in the District Plan to develop an Industrial Resource Area for Stewart Island.



Council resolved these by modifying boundaries and introducing additional performance measures. The six other appeals related to resource consents, four of these were resolved during mediation and the remaining two Council decisions were upheld by the Environment Court.

Library Services

Council's library service has always rated highly in our annual residents' satisfaction survey and continues to do so with an average satisfaction score of 96.4%.

28% of fiction is now less than three years old, with the 33% target expected to be met by June 2008.

The turnover rate (number of book issues divided by the total stock held) decreased to 3.5 despite the target of 4.5.

While this decline is not ideal, it is in line with other libraries throughout New Zealand which have also noticed a drop in the number of physical book issues.

Steady door counts around the country however show that people continue to use the library, but may not necessarily be visiting to borrow books.

Regulatory Services

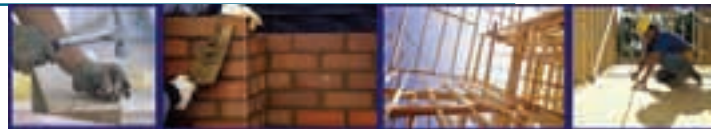
For the 2005/2006 year 78% of Building Consents were processed within the 20 day timeframe required under the Building Act.

100% compliance was not achieved, largely due to the large number of complex consents being applied for and the amount of building activity in the District.

Council reviewed the resources required to process consents and as a result, is planning to employ a consent processing officer in 2006/2007.

100% of Land Information Memoranda were issued within the requirement of 10 working days, and 67% of Certificates of Acceptance (a new requirement under the Building Act 2004) were issued within required timeframes.

In Health Regulation, the Council registers and inspects premises that prepare or sell food and investigate any notified diseases. Council inspected 87% of the 304 registered food



premises during the year. Overall 83% of residents said that they were satisfied with this service.

Dog control continues to be an area where residents are dissatisfied, with 78% of residents responding that they are satisfied with this service. While the rating may be lower than other services, dissatisfaction may arise from dog owners who have received infringement notices for wandering dogs or unregistered dogs, or people who see wandering dogs.

In addition, the perception of the service may have been affected by the Government's proposal to microchip dogs which drew a strong response from some sectors of the community, particularly the farming community which forms a large proportion of the Southland District.

Resident satisfaction with Council's stock control was high at 87%.

Sewerage

The Stewart Island sewerage scheme extension and Gorge Road sewerage scheme construction were completed in 2005/2006. These schemes attracted a 50% government subsidy and together with the District subsidy, local residents were required to contribute one-third of the costs.

The proposal to construct a sewerage scheme in Tuatapere was delayed with the Council agreeing with the community to undertake testing of on-site sewerage treatment systems to determine whether there were any issues with the standard of treatment and groundwater contamination. The result of this investigation shows that there was a risk of contamination and as a result the Council will now work on the construction of the sewerage scheme for 2006/2007.

The construction of a sewerage scheme in Wallacetown was also not completed in the year due to delays with the resource consent process. The resource consent process has now been completed and the scheme is expected to begin construction in 2006/2007.

Other projects for sewerage treatment upgrades have also been delayed, specifically the construction of a wetland treatment system in Lumsden and treatment upgrade in Riverton (which was successful in obtaining Ministry of Health subsidy).

The target of less than 10 failures in total across all Council's sewerage schemes was not met with 29 blockages reported and 15 of these relating to blockages outside a property's own



plumbing. It is expected that these blockages will be reduced over the coming years with significant upgrades scheduled in the Long-Term Council Community Plan 2006-2016.

Over half of the Council's sewerage treatment schemes complied with their resource consent effluent standards. However five schemes had a period of non-compliance which is also expected to improve in the future with significant treatment upgrades planned in the Long-Term Council Community Plan. In addition, 13 odour complaints were recorded. Eight of these were from the Gorge Road scheme.

Gorge Road is a new scheme which was completed in 2005, and often when a new scheme is established there is a period of commissioning to ensure the system is operating correctly. There was found to be a problem with venting of the system which is being addressed by installing air vents.

Water Supplies

98% of tests of urban water supplies complied with the New Zealand Drinking Water Standards. 86% of residents were satisfied with the pressure of urban water supplies and 93% of residents were satisfied with the reliability of the water supplies.

47 shutdowns of water supplies occurred during the year. In 12 instances, customers were notified 24 hours beforehand. Non-notified shutdowns occur when urgent problems, (such as a burst main) arise that require immediate repair.

In these instances it is not possible to notify consumers beforehand. A more robust renewals strategy is programmed in the Long-Term Council Community Plan 2006-2016 and it is hoped that this will, over time, reduce the number of failures and consequently reduce the number of unplanned shutdowns.



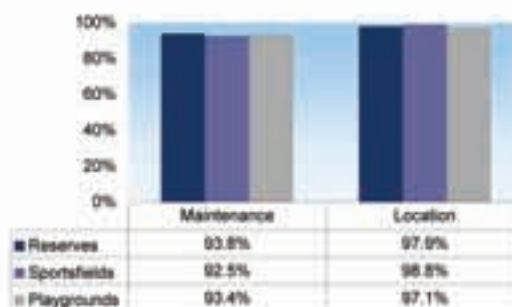
The project to construct a standby generator in Te Anau at the lakefront and an upgrade of the Te Anau rising main were not completed in 2005/2006.

These are expected to be completed next year and have now been included in the LTCCP 2006-2016.

Reserves, Sportsfields and Playgrounds

Residents continued to record high satisfaction levels for the location, amenities and maintenance of Council's reserves, sportsfields and playgrounds.

Resident Satisfaction with Reserves, Sportsfields, Playgrounds



Mayor



Frana G Cardno, QSO JP
(03) 249 8378

The Council consists of a Mayor and 12 Councillors - one from each of the District's wards - elected by Southland District residents'/ratepayers' triennially.

The Council's responsibilities include representing the interests of the District, developing and approving Council policy, determining the expenditure and funding requirements of the Council and monitoring its performance.

The Council also has 12 Community Boards. Five of these have responsibility for an entire ward; the remaining seven have responsibility for their township only.

Community Boards prepare local budgets, recommend local rates and exercise decision-making power on issues specifically delegated by the Council.

Throughout the District 16 Community Development Areas have been identified and established, which include local townships and surrounding areas.

The purpose of CDA Committees is to further encourage local input in addressing the needs of local communities and assessing priorities.

COUNCIL MEMBERS AND COUNCIL

Te Tipua



Jim Copland JP
(Deputy Mayor)
(03) 208 9033

Stewart Island/
Rakiura



Peter Goomes
(03) 219 1057 Oban
(03) 217 6585 Ingill

Five Rivers



Sue Anderson
(03) 248 6372

Toetoes



Paul Duffy
(03) 206 6491

Waihopai



Debbie McCallum, JP
(03) 217 4990

Winton



Lyall Bailey
(03) 236 0960

Wallacetown



John Frew
(03) 236 0646

Wallace



Brian Drummond
(03) 236 7574

Waikaia



Brian Dillon
(03) 201 6166

Te Anau



Diane Ridley, JP
(03) 249 7368

Tuatapere



George Harpur
(03) 226 6040

Riverton/Aparima



Rodney Dobson
(03) 224 6135

AUDIT REPORT



TO THE READERS OF SOUTHLAND DISTRICT COUNCILS SUMMARY ANNUAL REPORT FOR THE YEAR ENDED 30 JUNE 2006

We have audited the summary annual report.

Unqualified opinion

In our opinion:

- the summary annual report represents, fairly and consistently, the information regarding the major matters dealt with in the annual report; and
- the information reported in the summary financial statements complies with FRS-39: Summary Financial Reports and is consistent with the full financial statements from which it is derived.

We expressed an unqualified audit opinion, in our report dated 25 October 2006, on:

- the full financial statements; and
- the Council's compliance with the other requirements of Schedule 10 of the Local Government Act 2002 that apply to the annual report.

Basis of opinion

Our audit was conducted in accordance with the Auditor-General's Auditing Standards, which include New Zealand Auditing Standards. Other than in our capacity as auditor, we have no relationship with or interests in Southland District Council.

Responsibilities of the Council and the Auditor

The Council is responsible for preparing the summary annual report and we are responsible for expressing an opinion on that report. These responsibilities arise from the Local Government Act 2002.

Julian Tan
 Audit New Zealand
 On behalf of the Auditor-General
 Christchurch, New Zealand
 26 October 2006

Authorised for release by the Chief Executive, David Adamson on 26 October 2006

Annual Report

If you would like further information or would like a full copy of the Annual Report contact the Southland District Council on (03) 218 7259

2005/2006

First Edition

The Southland Regional Heritage Committee jointly manages grants for preservation and development funds.

The committee has members from Southland District, Invercargill City and Gore District Councils.

It is responsible for the allocation of funding to groups undertaking heritage projects and to the region's smaller museums. Its purpose is to provide grants for projects and initiatives which preserve, communicate and promote Southland's heritage and are significant in a regional context.

Applications for grants are considered twice a year, with applications closing on 31 March and 30 September.

Further details, including application forms, are available from Council offices.

Ohai Railway Fund Allocations

Details of applications considered by the Ohai Railway Fund Committee recently were:

Organisations/Individuals

- Hospice Southland - To assist operational funding and service provision in the Ohai Nightcaps area. \$3,000
- Takitimu Primary School - To assist with the 'Computers for Families' project. \$2,474
- Western District Scout Committee - To assist in re-starting the Takitimu Scout Group, Nightcaps. \$500
- Western Southland Promotions Assn Inc - To assist with the development of a website for Western Southland. \$1,000
- Winton A & P Association - To assist with purchase of stock pens. \$1,000

One application declined.

Post Secondary School/Adult Education Applications

- Booth, Nathan Paul \$750
- McEwan, Maria \$200



Drummond - History from 1870...



Pam Booth, Lorna Anderson and Eunice Roberts at the launch of the sign.

Every town has its secret and its soul, but these are not always easy for the casual visitor to discover.

When driving through Drummond in Central Southland your eye may be drawn to the avenue of trees to the west and the way that the main street is set behind this instead of along the highway. The boulevard had been government land set aside for a railway that eventually bypassed the town and went through Otautau instead.

George Begg, the famous racing car engineer was one of the main driving forces behind the beautification of the gorse ridden area. George is one of the secrets of Drummond and his story is revealed

along with others from the early days of Drummond on its new historic sign which was launched on Thursday the 9th of November.

A lot goes into the making of a town, and a lot goes into the design of a sign. Ask Lorna Anderson, Pam Booth and Eunice Roberts from Rural Women New Zealand who conceived the idea, drafted the information from a local history publication, cross checked the facts with knowledgeable local icons like John McLeish, chose the pictures, bundled it all off to Southland District Council designer Donna Hawkins who had it printed just as the concrete was drying on the stand deep in Drummond soil.

A celebratory lunch was held at the bowling club with journalist Pat Soper as the guest speaker. Her values of hard work, good cooking and love of the land resonated with all present. Then it was off up the road for the unveiling. Typically, the women had done all the work and it was the men who did all the talking. John McLeish touched on the history, and Southland Spirit of a Nation brand manager, Gerry Forde, had the pupils from the Central Southland Rural Primary School applaud the hard working members of Rural Women NZ, who in turn applauded the children as the future of Drummond. Then a strong westerly almost beat John McLeish to the unveiling, but he wrestled bravely against the buffeting to reveal to all the historic sign for the district of Drummond.

What makes Drummond special? What are its secrets? Next time you're out that way, pull over by the war memorial and take time to read the historic sign.

Toukley Clan Gathering in Australia a great success

The Celtic Sounds group showed some of the great musical talent in Southland when they represented our province at the Toukley Clan Gathering recently.

Band musical director Tui Gunn said the audience responded enthusiastically to the group and especially when Shirley (Manson) took the stage to sing the Dark Island. The wind had whipped up a bit by then and the ominous roll of thunder was heard in the distance, but as true Southlanders we carried on playing as the locals kept saying, "it's fine, it will keep going around us". Well unfortunately it didn't and the rain came down as only it does in Australia, and of course Australians aren't used to allowing for wet weather so with no cover over the stage, or the audience, everyone scrambled to pack up the equipment and head for shelter.

All was not lost as we still had the Saturday evening show to do so we all headed for the Toukley Bowling Club where we had enjoyed fantastic hospitality during our stay. When we opened with Flower



of Scotland, everyone stood for the anthem and sung along with gusto. It was a great start and everything just got better and better.

She said all in all a great time was had by all and I couldn't wish for a better group of people to travel with as everyone made a tremendous effort both with all the rehearsals and fundraising concert before hand and also while we were there. We feel very privileged to have had the opportunity to represent Southland in this way.

Rates Relief: Protected Land

Property owners in Southland District who believe that they are entitled to rates relief under the QEII Trust can apply directly to Council to have their situation assessed.

They should include in their application a legal description of their land, the valuation number of their rates assessment, as

well as a copy of the covenant.

The QEII Trust is a statutory organisation which allows landowners to protect special features on their land through its open space covenants.

Applications must be lodged with Council's rates office by 30 June for the following year's rates.

TOTAL MOBILITY



Cr Debbie McCallum

For the past three years I have been involved in the management of the Total Mobility Scheme.

Until now the scheme was only available to persons living in Invercargill and Gore.

I am pleased to report that the Southland District Council has joined the scheme and plans are under way to provide the service to those persons living within district townships, which currently have a taxi service available.

Total Mobility is a transport assistance scheme available to people who because of physical, sensory, intellectual, neurological or psychological impairment cannot use public transport.

Assistance has generally been in the form of subsidised taxi trips, whereby the individual user pays half the fare, and the other half is subsidised by a combination of local authority and central government funding. The scheme also offers a subsidy for transport operators to install wheelchair and mobility scooter hoists.

The Ministry of Transport is currently reviewing the Total Mobility scheme. The aim is to improve the coverage, adequacy, portability, sustainability and consistency of the scheme, throughout New Zealand.

Land Transport New Zealand (LTNZ) is considering the possibility of other transport providers participating in the Total Mobility Scheme. The Southland District is well placed to pioneer innovative ways to make Total Mobility work for people in rural areas. Total Mobility makes it possible for those who are mobility disadvantaged to

participate more fully in their community, even if travel is only used out of the district.

How to join the Total Mobility Scheme



- Brochures are available from all SDC offices.
- You need to complete an application form available from an approved issuing agency. These are support agencies eg Royal New Zealand Foundation for the Blind, Disability Resources, Stroke Foundation, CCS and several others.
- Your application will need to be endorsed by your agency.

KAKAPO ENCOUNTER ON ULVA ISLAND



Cr Peter Goomes

In August Prime Minister Helen Clark and Mayor Frana Cardno launched the Kakapo Encounter for the Ulva Island Charitable Trust.

During a short function to open the project at the Wharfside Café at Halfmoon Bay it

was noted that this is one of the many projects that are community driven, but in partnership or with the help of local bodies or government departments.

This is becoming more common as people realise the benefits to their communities that they can gain by sharing information and resources and it also gets more support from the local people, as there is a greater sense of community ownership.

The Ulva Island Trust was set up in 1999 when the Department of Conservation (DOC) was looking at ways to improve the visitor experience and the facilities on Ulva Island.

There was not enough money in the DOC budget to do all that needed to be done in one year and

instead of splitting the upgrade over several years it was decided by the Stewart Island community that a Trust could assist by obtaining money from various conservation and charitable funds. So five locals were elected and the Trust was born.

Grants were obtained from the Community Trust of Southland, the Les Hutchins Foundation, the Stout Trust, the Tourism Facilities Grants, local Forest and Bird, the Dancing Star Foundation, and others who gave donations and help. From the nearly \$200,000 raised and the DOC contribution the tracks were made and the island could then give the 30,000 visitors per year a much better look at an island sanctuary that has had rats removed for ten years. Now it can be seen just what a huge difference there is in both fauna and flora once the pests are removed.

Since then the Trust has assisted with the release of several endangered birds and the way they are increasing in numbers without predation is proof of the value of this type of management.

The Trust has long had the idea of having a Kakapo on display as it is one of the best known successes in bird management to prevent extinction. But, few people have been lucky enough to see one of these

big green parrots, so after several years of obtaining the consents from numerous agencies, the Kakapo Encounter arrived.

A large security fenced pen was built connected with a race to a smaller clear fenced viewing area, where up to thirty people could watch a kakapo climbing around and being hand fed by its full-time minder.

The materials and labour were largely donated and funded by Comalco, who help fund the Kakapo Recovery Programme, Carters, the Alarm Centre, the Tindall Foundation, Lewis Windows, Southland Glass, and local freight carriers.

The trips left the Halfmoon Bay wharf before dusk and went to Ulva Island where a short walk took visitors into the bush and the viewing area. The whole experience took two to two and a half hours. From the comments received and the expressions on people's faces it proved a very worthwhile project for the visitors and the community. The programme ran from late August to the end of Labour Weekend and it is hoped that similar events can happen again in the future.

Building

There's a Council Main Running Through My Property – Can I build Over it?

NO. The following applies to building near Council service mains:

All permanent structures must be either:

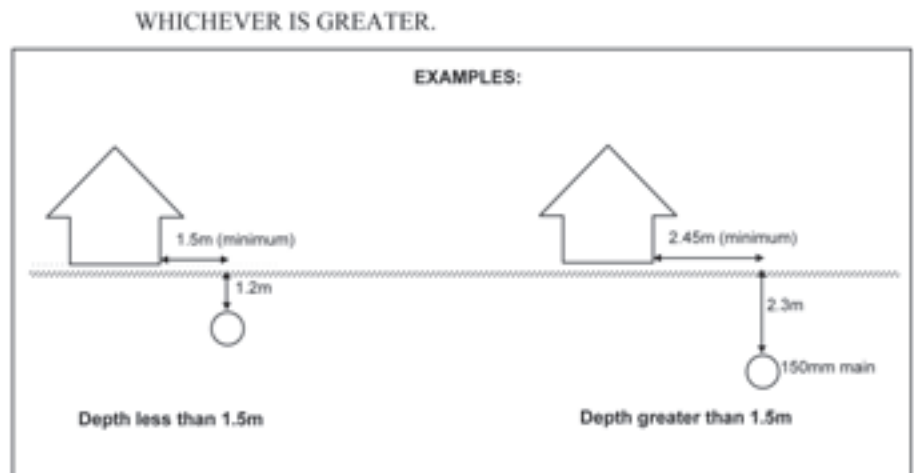
- a) a horizontal distance of 1.5 metres away from the main, OR
- b) a horizontal distance equal to the depth of the main plus the diameter of the pipe, away from the main.

This applies to all permanent structures such as:

- houses
- garages
- workshops
- sleepouts
- glasshouses
- garden sheds (*with foundations*)
- commercial buildings

Fences, gazebos, garden sheds with no foundations and paved areas are generally exempt as they can be moved or dug up if required.

Council can provide information on the location of any Council main through



your property, at no charge. An on-site location service is also available, although a fee may apply. For further information please phone your local Council Office.

Why was the Main put there in the first place?

There are two main reasons why service mains are laid through private property instead of Council Road Reserve. The first is cost. It is often cheaper to lay

mains through private property, especially if this is a shorter route.

The other reason is that the design of the scheme may mean that mains have to be put in private property to ensure that there is sufficient "fall". Sewage and stormwater need to flow downhill; in some areas if the main is under the road, properties may not have sufficient fall and would not be able to connect, or would have to use a pump.

New Walkway

Te Anau's new \$490,000 walkway officially opened in October. The walkway covers the 850m distance from Real Journeys' terminal through to the boat harbour.

Cr Diane Ridley said that it is a real people place and it is great that it will link up all the existing work done recently around town and all the other walkways.

One of the features of the walkway is the new LED lighting, which is designed to greatly reduce greenhouse gas emissions. The lighting is designed to have a longer lifespan than traditional lighting and has a softer down-lighting effect which reduces the impact on viewing the night sky.

Group Manager Asset Management Peter Higgs said the lighting is part of Council's commitment to reducing pollution and energy use, with Council looking at an around 80% energy saving. Similar lighting installations will follow in Manapouri and at the Riverton Focal Point and eventually throughout the whole district.



Care with drinking water

Some plumbing fittings have the potential to allow minute traces of metals to accumulate in water standing in the fittings for several hours.

Although the health risk is small, the Ministry of Health recommends that you flush a mugful of water from your drinking-water tap each morning before use to remove any metals that may have dissolved from the plumbing fittings.

Southland District Council is also recommending this simple precaution for all households, including those on private and public water supplies.



New Citizens Welcomed to Southland

Southland District Mayor Frana Cardno formally welcomed 11 new citizens to the District at the citizenship ceremony held in the Council Chambers recently. Five nationalities were represented at the ceremony, where Mayor Cardno congratulated them on choosing New Zealand and Southland in particular, as their place of residence.



Each new citizen gave their allegiance to New Zealand and assumed the responsibility and opportunities presented to them by becoming citizens. Mayor Frana Cardno was pleased to see so many new citizens and acknowledged that it was a significant decision for each person to make such a commitment to New Zealand.

“Even though you will always retain affection for your land of birth, I hope that you will also find happiness here in Southland,” she said.

Announcing the arrival of one of the largest events ever to come to Te Anau



The Southland District Council Friendship Committee is hosting the 2007 Sister Cities National Conference 26-29 April 2007 in Te Anau. Up to 200 people are expected to gather in Te Anau for the three day conference, offering not only an excellent showcase of our amazing scenery and lifestyle to some very influential people, but also some fantastic opportunities for local businesses.

Liaison Officer Shirley Manson said Sister Cities is an international organisation formed on 11 September 1956 by the US President Dwight Eisenhower as a means to promote cultural understanding and peace between nations and lessen the likelihood of future wars.

The first New Zealand Sister City connection was formed 25 years ago between Hastings and Guilin, an area of five million people in

China, and many other associations have followed, including that between Southland District and Wyong Shire in Australia. Recently there has been considerable interest from China and Japan in Sister City relationships with New Zealand as they see us as a peaceful country with impressive agricultural production. China is now our fourth largest trading partner and Japan our third.

As per previous events, the 2007 Sister Cities Conference will see delegates from trade, education and local government representing China, Japan and South Korea and attendees from all over the world from countries such as Thailand, Nigeria, Australia, New Zealand and the USA .

She said that Council are having a display stand at the conference, which along with delegates, encourages participation from members of the public. Anyone interested in attending is welcome to contact Ms Manson at the Council for more information.

The Southland District Council Friendship Committee looks forward to bringing the 2007 Sister Cities Conference to Te Anau and highlighting what a wonderful part of the world we live in.

Council Grant Allocation

Council provides grants, scholarships and funding assistance for a wide range of community related activities and projects.

Council generally assesses its scholarships, grants and donations annually, but three of its major contributions (Venture Southland, Regional Heritage and Southern Rural Fire District) are on a regional basis and are covered by funding formulas.

In addition Council is asked periodically to make one-off capital contributions to help with the funding of other projects that are deemed to be of regional importance or significance. In the past these have included \$50,000 to the Splash Palace Swimming Pool, \$125,000 to Stadium Southland, \$100,000 to Rugby Park and \$100,000 to the Southland Hospice. Council has also contributed to the funding of the Southern Institute of Technology zero fees scheme.

In this current year the Council agreed to make a contribution to the Southland Indoor Leisure Centre Charitable Trust of \$80,000 for the purchase and installation of nets for the Stadium Southland Velodrome. Council believes that the extension to Stadium Southland, that includes the velodrome and the regional sporting organisations offices, is an excellent regional facility that will benefit Southland as a whole for many years to come.

The extension adds greater flexibility to the complex as a multi-functional facility. It was decided by Council that this one-off grant would be collected by a separate Uniform Annual Charge across all households in the District.

Council's rates are struck in accordance with the Local Government Act 2002 and Council is responsible under the law for the following functions:

- community well-being and development
- environmental health and safety (*including building control, civil defence, and environmental health matters*)
- infrastructure (*roading and transport, sewerage, water/stormwater*)
- recreation and culture
- resource management including land use planning and development control.

To do this Council listens to and consults with its communities, develops and advances community viewpoints, defines and enforces appropriate rights within communities, and provides for effective participation. Council's decisions to contribute funding to the above projects were taking into account these obligations.

Mobile Library Timetable

27 November 2006 -
13 April 2007



Maintenance			Mon	27 Nov	15 Jan	12 Feb				
Athol	Shop	1:00 - 3:00	Mon	18 Dec		5 Feb		5 Mar		2 Apr
Balfour	Tavern	9:30 - noon	Tues	5 Dec	23 Jan		20 Feb		20 Mar	
		6:00 - 8:00	Tues	19 Dec		*		6 Mar		3 Apr
Blackmount	School	11:00 - 12:00	Mon	4 Dec	22 Jan		9 Feb		19 Mar	
Colac Bay	Foreshore	12:30 - 2:00	Thurs	21 Dec		8 Feb		8 Mar		5 Apr
Dacre	School	11:00 - 12:30	Fri	22 Dec		9 Feb		9 Mar		13 Apr
Drummond	Tavern	3:30 - 5:00	Thurs	14 Dec		1 Feb		1 Mar		29 Mar
Edendale	Car Park	2:00 - 4:30	Fri	22 Dec	26 Jan	9 Feb	23 Feb	9 Mar	23 Mar	13 Apr
Feldwick	Hall	9:30 - 10:30	Mon	4 Dec	22 Jan		19 Feb		19 Mar	
Five Rivers	Hall	3:30 - 5:00	Mon	18 Dec		5 Feb		5 Mar		2 Apr
Fortrose	Picnic Area	2:30 - 4:00	Thurs	30 Dec	18 Jan		15 Feb		15 Mar	
Garston	Main Street	10:30 - 11:30	Mon	18 Dec		5 Feb		5 Mar		2 Apr
Glenham	Hall	11:30 - 1:00	Thurs	30 Nov	18 Jan		15 Feb		15 Mar	
Gorge Rd	Hall	9:00 - 11:30	Tues	28 Nov	16 Jan		13 Feb		13 Mar	
Hauroko Valley	School	1:30 - 4:00	Mon	4 Dec	22 Jan		19 Feb		19 Mar	
Hedgehope	Hall	10:00 - 11:30	Fri	15 Dec		2 Feb		2 Mar		30 Apr
Longbush	Kindergarten	9:00 - 10:00	Fri	8 Dec	26 Jan		23 Feb		23 Mar	
Mokoreta	Hall	9:30 - 10:30	Thurs	30 Nov	18 Jan		15 Feb		15 Mar	
Mossburn	RSA	2:00 - 4:30	Tues	5 Dec	23 Jan		20 Feb		20 Mar	
		2:00 - 4:30	Tues	19 Dec		*		6 Mar		3 Apr
Orepuki	Main St	2.30 - 4.00	Thurs	21 Dec		8 Feb		8 Mar		3 Apr
Otara	Hall	2:00 - 4:00	Wed	29 Nov	17 Jan		14 Feb		14 Mar	
Pukerau	School	9:30 - 11:30	Wed	6 Dec	24 Jan		21 Feb		21 Mar	
Rimu	School	9:00 - 10:00	Fri	22 Dec		9 Feb		9 Mar		13 Apr
Riversdale	Hall	2:00 - 5:00	Thurs	7 Dec	25 Jan		22 Feb		22 Mar	
		11:00 - 1:30	Wed	20 Dec		7 Feb		7 Mar		4 Apr
Roslyn Bush	Playcentre	1:00 - 2:00	Fri	15 Dec		2 Feb		2 Mar		30 Mar
Ryal Bush	Monument	2:30 - 4:00	Fri	15 Dec		2 Feb		2 Mar		30 Mar
Te Tipua	School	11:00 - 12:30	Fri	8 Dec	26 Jan		23 Feb		23 Mar	
Thornbury	Shop	9:30 - 11:00	Thurs	21 Dec		8 Feb		8 Mar		5 Apr
Tokanui	Main St	1:30 - 4:00	Fri	1 Dec	19 Jan		16 Feb		16 Mar	
		10:00 - noon	Wed	13 Dec		31 Jan		28 Feb		28 Mar
Waianiwa	Hall	1:30 - 3:00	Thurs	14 Dec		1 Feb		1 Mar		29 Mar
Waikaia	Hall	11:00 - 12:30	Thurs	7 Dec	29 Jan		22 Feb		22 Mar	
		3:00 - 5:00	Wed	20 Dec		7 Feb		7 Mar		4 Apr
Waikaka	Main St	2:00 - 4:00	Wed	6 Dec	24 Jan		21 Feb		21 Mar	
Willowbank	School	12:30 - 1:30	Wed	6 Dec	24 Jan		21 Feb		21 Mar	
Waikawa	Hall	10:00 - noon	Fri	1 Dec	19 Jan		16 Feb		16 Mar	
Waimahaka	Hall	10:00 - noon	Wed	29 Nov	17 Jan		14 Feb		14 Mar	
Wallacetown	Com Centre	9:00 - noon	Thurs	14 Dec		1 Feb		1 Mar		29 Mar
Wendon	Hall	9:00 - 10:30	Wed	20 Dec		7 Feb		7 Mar		4 Apr
Wendonside	Hall	9:30 - 10:30	Thurs	7 Dec	25 Jan		22 Feb		22 Mar	
Woodlands	Shop	2:00 - 4:00	Tues	28 Nov	16 Jan		13 Feb		13 Mar	
		2:00 - 4:00	Wed	13 Dec		31 Jan		28 Feb		28 Mar

Any queries, requests or renewals: please telephone the Winton Library (03) 236 0476.

Note: the following areas have fortnightly visits:

Balfour, Riversdale, Waikaia, Mossburn, Edendale, Tokanui, Woodlands.

Renewals can be made by email to: wintonlibrary@southlanddc.govt.nz

* denotes a public holiday

“Parents and Carers are the first role models”



Last year in Southland was yet another where young drivers were over represented in crash figures, with crashes involving 15–19 year olds in some areas of Southland well above the national average. Based on these figures we have to say that the behaviour of young people and their attitudes towards driving is a major issue in Southland and one we are always trying to find answers too.

In the Western Southland area: Winton; Otautau; Ohai back through to Invercargill City young drivers have been disproportionately involved in serious crashes causing death, serious to minor injuries and damage to property. The drivers of these vehicles all have two things in common, firstly they are all aged 15–19 year and all had restricted licences and on most occasions were breaching the conditions of their licences by carrying passengers.

Road safety practitioners and the Police can provide assistance and advice, but ultimately there must be changes made that come from the families and from the communities that young people live in.

Where do young drivers learn the habits and the behaviour that they exhibit when driving? Often this is learnt from parents and care givers who are the ‘first role models’ that children, then young adults will copy. It is never too early to start teaching road safety – it is never too late to change. Children will copy what they see the adults in their lives doing on the street and in their vehicle every day. Tips to modelling good driver behaviour early are:

➤ **The home driveway**

If possible separate the driveway and garage from where children play.

Make sure you know where your toddler is – especially when people are coming and going.

Fit special mirrors to your car to make it easier to see when reversing.

➤ **In the street**

Choose safe places to cross where there is a proper crossing or a good view of the traffic. Stop at the kerb before crossing and explain that you are checking for traffic.

Once mobile hold your child’s hand at all times. Stop at driveways and tell your child you are looking to see if there are any cars coming. Reversing lights, alarms on trucks, engine noise and exhaust emissions are all things to point out. Boys at this age are three times more likely than girls to be involved in pedestrian crashes, so it is worth persevering even if your boy is not happy with it at first.

Avoid (where possible) telling your child what to do. Let him or her share your thinking. Then invite your child to help you decide when to cross.

➤ **Car parks**

Car parks are confusing for small children. You need to work out some rules early to help your child to know what to do when getting out of the car. Do not allow your child to leave the car until you are at the door waiting. If you need to get a baby out of the car, have your child wait inside the vehicle until you are ready. Once out of the vehicle stand with your child and look around for other moving vehicles and talk to your child about where dangers may come from.

Scholarships

People First
Southland District Council
Te Kōwhiri Pōtahi o Murihikenui

CENTENNIAL BURSARY
This Scholarship is open to residents and ratepayers of the Southland District Council area and is for all students commencing their first year of study.

CREATIVE NEW ZEALAND
These scholarships are only open to residents in the Southland District Council area.

VALMAI ROBERTSON DANCE SCHOLARSHIP
All dance types are eligible in this category.

ART SCHOLARSHIPS
Open to all forms of art studies.

OUTWARD BOUND
Residents & ratepayers of the Southland District Council area can apply.

There are two Outward Bound Scholarships in this category, one for 18-26 years and one for 27 years and over.

APPLICATIONS CLOSE 20 DECEMBER 2006
All applicants are required to attend an interview on 18 January 2007.

Application forms available from all SDC offices or by phoning Bronwyn Lindsay on (03) 211 1426

These Scholarships are only for people living or owning property within the Southland District Council area, which excludes Invercargill, Bluff, Otagara and Gore.

Contact Details www.southlanddc.govt.nz

People First
Te Kōwhiri Pōtahi o Murihikenui

You can ring any Council Office
24 hours a day, seven days a week.

Invercargill	(03) 218 7259
Lumsden	(03) 248 7307
Otautau	(03) 225 8069
Riverton	(03) 234 8508
Stewart Island	(03) 219 1049
Te Anau	(03) 249 7178
Winton	(03) 236 7291
Wyndham	(03) 206 4330

Emergency messages will be passed on immediately.
Other messages will be passed on the following morning.