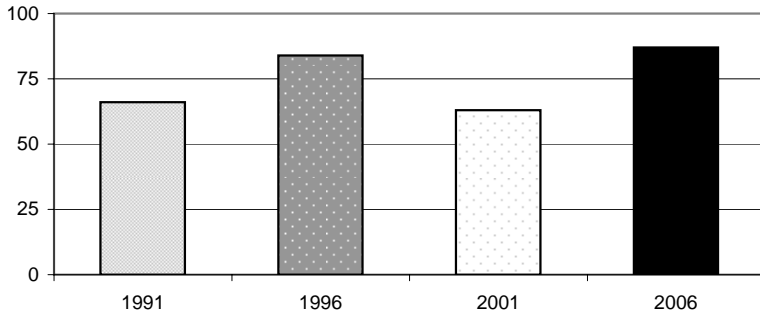


# Athol Demographic Analysis 2006

Source: Statistics New Zealand Census

NB - Totals may be fewer than the total usual residents as meshblock data set is small and does not include figures for some areas due to confidentiality rules.

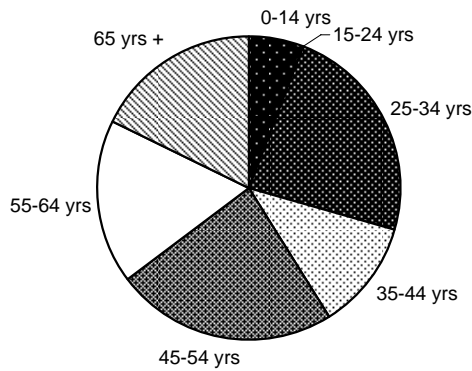
## Usually Resident Population



Year	Total	% Change
1991	66	
1996	84	21.4%
2001	63	-33.3%
2006	87	27.6%

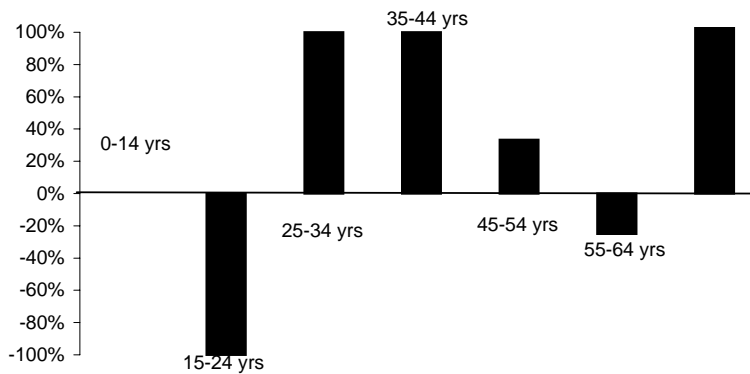
Sex	Total	%
Male	51	54.8%
Female	42	45.2%

## Population By Age



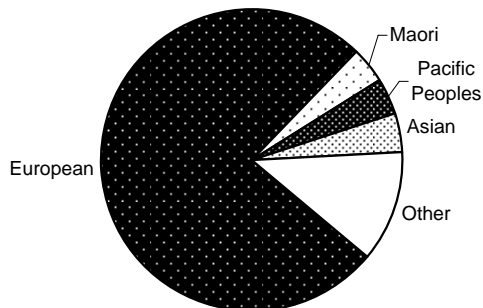
Age Group	Total	%
0-14 yrs	3	6%
15-24 yrs	0	0%
25-34 yrs	12	24%
35-44 yrs	6	12%
45-54 yrs	12	24%
55-64 yrs	9	18%
65 yrs +	9	18%

## Change in Age Groups 2001-2006



Age Group	Total Change	% Change
0-14 yrs	0	0%
15-24 yrs	-3	-100%
25-34 yrs	6	100%
35-44 yrs	3	100%
45-54 yrs	3	33%
55-64 yrs	-3	-25%
65 yrs +	6	200%

## Ethnic Composition

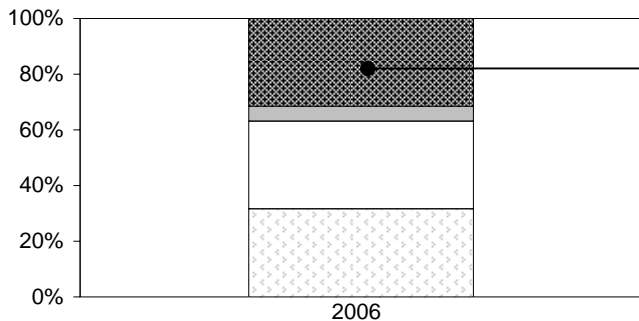


Ethnic Group	Total	%
European	57	76%
Maori	3	4%
Pacific Peoples	3	4%
Asian	3	4%
MELAA	0	0%
Other	9	12%

MELAA = Middle Eastern, Latin American and African

NB - as above

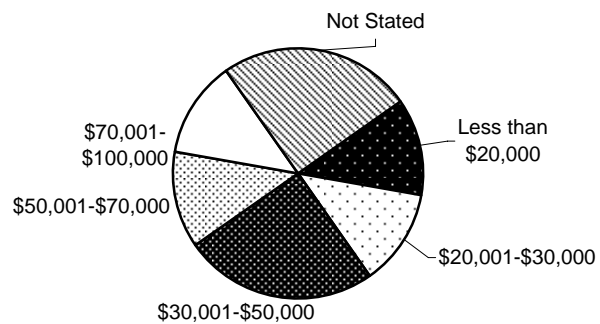
## Employment Status: 15 Years and Over



	Total	%
Paid Employee	18	27%
Employer	3	5%
Self-Employed	18	27%
Unpaid Worker	0	0%
Not in Labour Force	18	27%
Unemployed	3	5%
Not Stated	6	9%

## Household Income

	Total	%
Less than \$20,000	3	13%
\$20,001-\$30,000	3	13%
\$30,001-\$50,000	6	25%
\$50,001-\$70,000	3	13%
\$70,001-\$100,000	0	0%
Over \$100,001	3	13%
Not Stated	6	25%



## Total Number of Dwellings and Ownership

	Total	%
Owned or Partly Owned	24	53%
Not Owned	6	13%
Held in Family Trust	9	20%
Not Elsewhere Included	6	13%
Total	45	100%