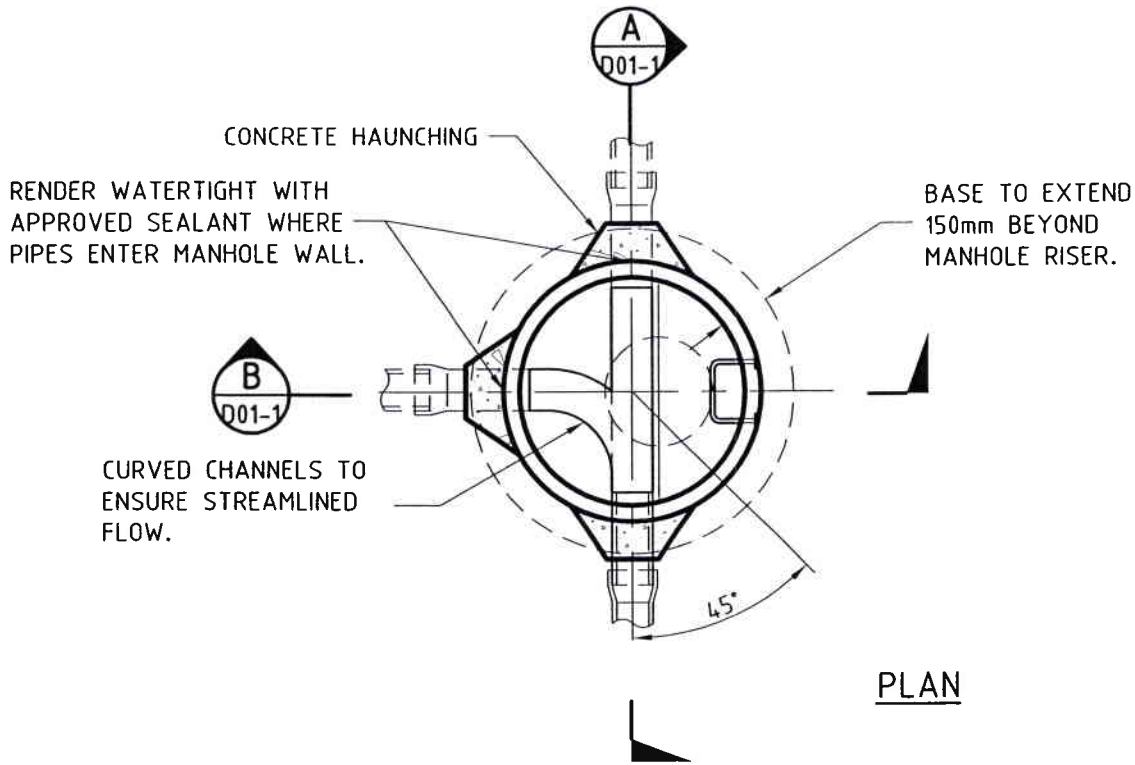




ORIGINAL SIZE A4 DO NOT SCALE, IF IN DOUBT AS



MINIMUM MANHOLE INTERNAL DIAMETER (mm)*				
OUTLET PIPE DIA. (mm)	PIPELINE DEVIATION ANGLE ( $\theta$ )			
	0-15°	16°-45°	46°-75°	78°-90°
Up to 300	1050	1050	1050	1050
375-600	1050	1050	1050	1050
675-750	1200	1200	1500	1500
825-900	1500	1500	1800	1800

\* TO BE USED AS A GUIDE ONLY. LARGER DIAMETERS MAY BE REQUIRED WHERE MORE THAN 1 INLET PIPE IS TO BE CONSTRUCTED.

### NOTES

1. ALL IN SITU CONCRETE OTHER THAN SITE CONCRETE SHALL HAVE A MINIMUM COMPRESSIVE STRENGTH OF 20MPa @ 28 DAYS.
2. ALL PRECAST MANHOLE UNITS (SHOWN SHADED) ARE STANDARD MANUFACTURED UNITS. (IE. HUMES OR SIMILAR APPROVED)
3. ALL BRANCHES SHALL BE CONSTRUCTED SUCH THAT THEY CAN BE READILY ACCESSED BY A CCTV CAMERA. THE HAUNCHING DETAIL (IE. CROSS SECTION) IS NOT TO BE COMPROMISED. IF REQUIRED, THE STRAIGHT THROUGH CHANNEL SHALL BE OFFSET FROM THE MANHOLE CENTRELINE AND THE BRANCH CHANNELLING LEFT STRAIGHT FOR A SUFFICIENT LENGTH TO ACHIEVE THE DESIRED RESULT.
4. ACCESS OPENING & RUNGS TO BE POSITIONED OVER THE UPSTREAM SIDE OF THE MANHOLE.

DATE : March 2005

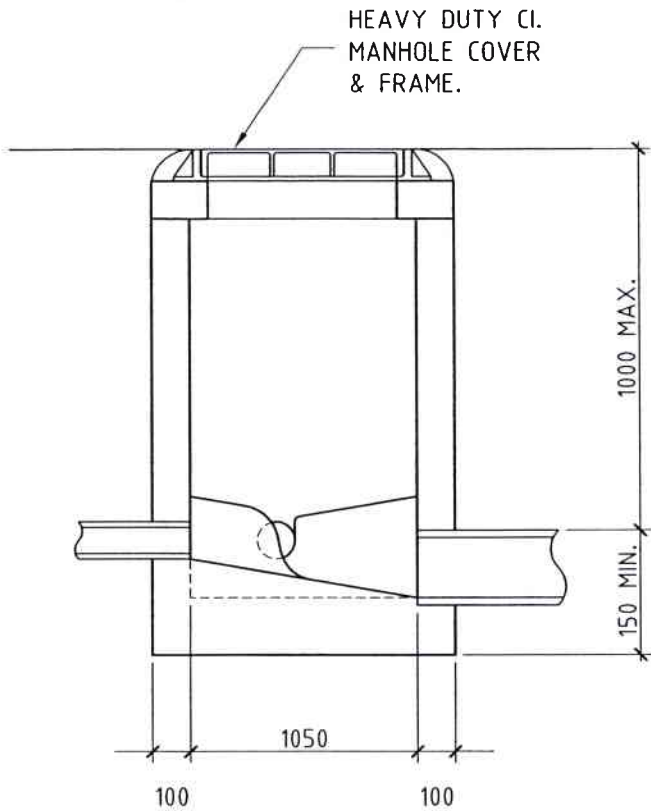


## STANDARD MANHOLE TYPICAL DETAILS PLAN VIEW

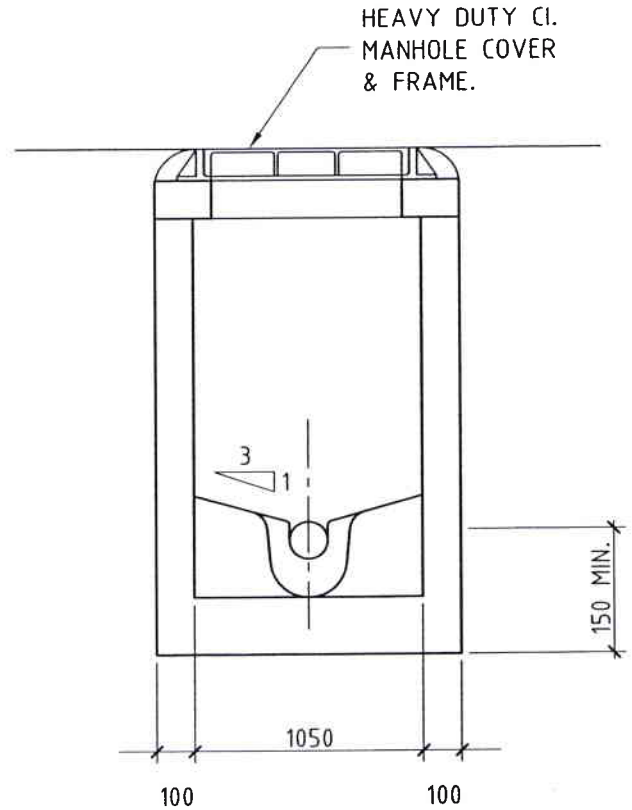
SCALE : Not to Scale

D01-2

ORIGINAL SIZE A4 DO NOT SCALE, IF IN DOUBT AS



SECTION A

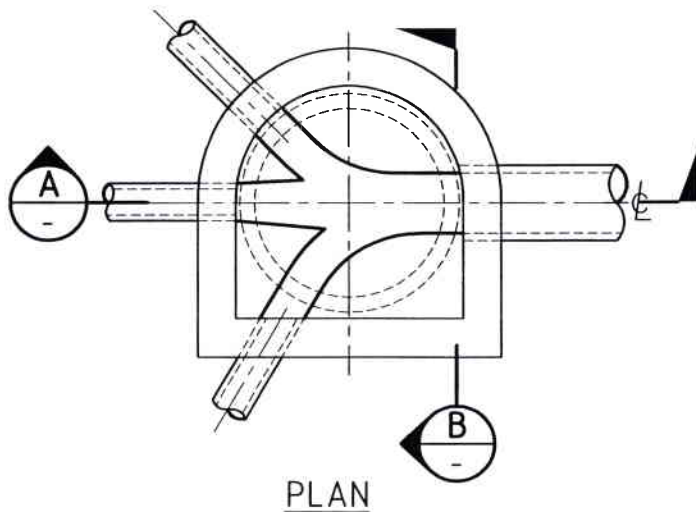


SECTION B

STEPS NOT REQUIRED FOR DEPTHS LESS THAN 1m.

A SMALLER DIAMETER MANHOLE MAY BE ALLOWED FOR SMALL DIAMETER PIPE LINES IF APPROVED BY THE ENGINEER.

NB: CHAMBERS MUST BE LARGE ENOUGH TO ALLOW FULL BENDING.



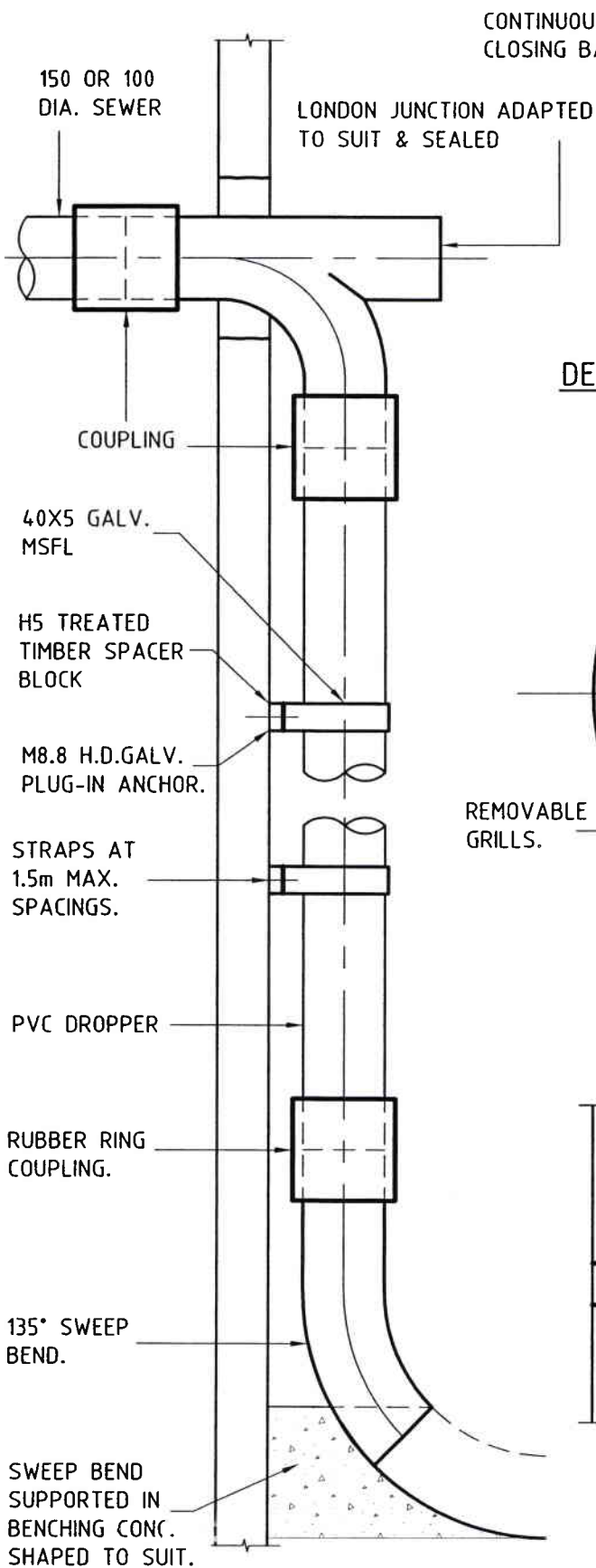
PLAN

ALL CONCRETE TO HAVE A MINIMUM COMPRESSIVE STRENGTH OF 17.5MPa @ 28 DAYS.

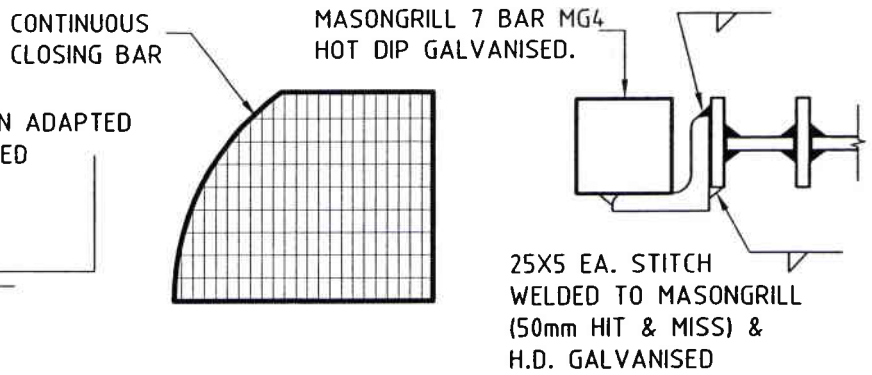
DATE : March 2005

SCALE : Not to Scale

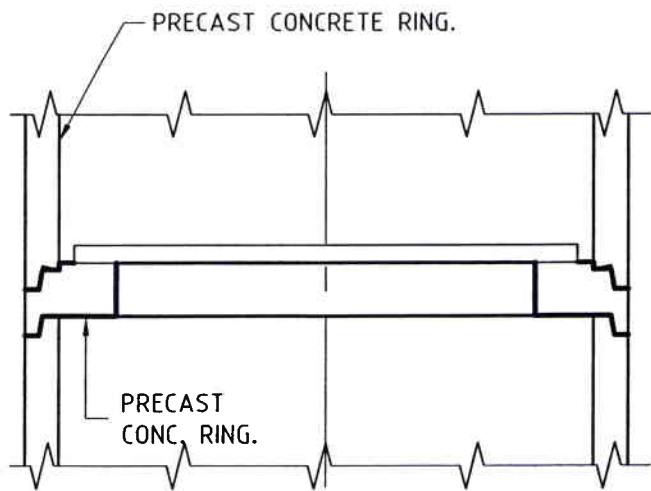
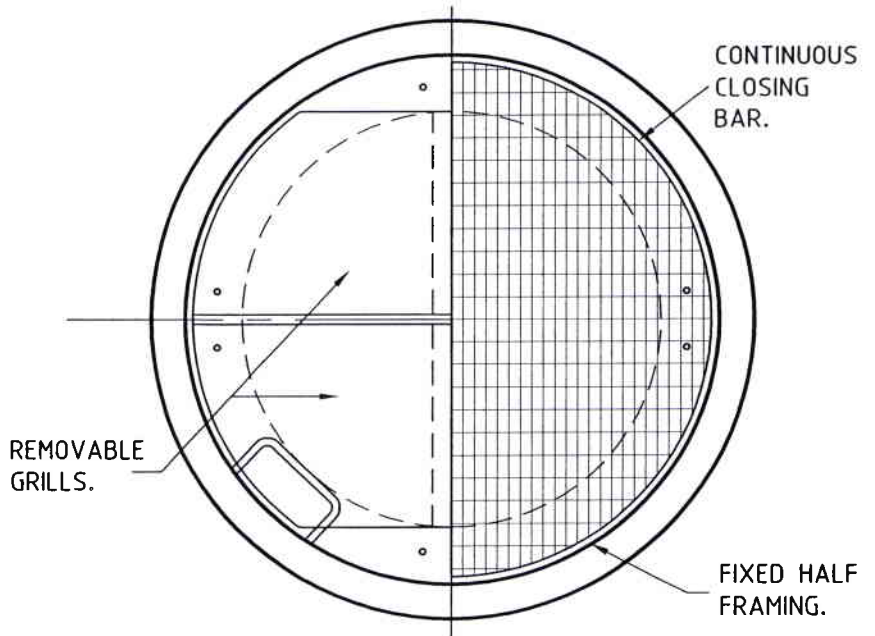
ORIGINAL SIZE A4  
DO NOT SCALE, IF IN DOUBT AS



**INTERNAL MANHOLE  
DROP INLET**



**DETAIL REMOVABLE GRILL**



**SAFETY PLATFORM**

(WHERE REQUIRED BY THE ENGINEER  
-AT MAXIMUM 4m CRS.)

NOTE: THE INTERNAL DIA. TO BE INCREASED  
WHERE INTERNAL DROPS ARE USED.

DATE : March 2005

**MANHOLE DETAILS**

SCALE : 1:10



**DROP INLET & SAFETY PLATFORM**

**D03**