

TUATAPERE WARD

| AREA | RESERVE | PAGE |
|------------------|---------------------------------------|-------------|
| Clifden | Clifden Recreation Reserve | 2 |
| | Clifden Bridge Reserve | 4 |
| Tuatapere | Jack and Mattie Bennett Memorial Park | 6 |
| | King Street Reserve | 8 |
| | Greenheart Reserve | 10 |
| | Tuatapere Recreation Reserve | 12 |
| | Manuka Island | 14 |
| | Elder Park | 16 |
| | Lions Playground | 18 |
| Monowai | Monowai Village Reserve | 20 |



File: 2063/0004

Clifden Recreation Reserve

Clifden 1

Description

| | |
|---------------------------------|---|
| Location | Clifden Domain Rd |
| Classification / Status | Recreation |
| Area (ha) | 78.1997 |
| Legal Description | Secs 5A, 5R, 20, 27, Lot 1 of Sec 1 & Pt 1, 5 & 14 Blk I, Lillburn SD |
| Control | Clifden Domain Board |
| Previous Management Plan | This replaces the current relevant section of the Western Reserves Management Plan 1997 |
| Hierarchy | Ward |
| Adjacent Land | This reserve is surrounded by farmland. |
| Facilities | Commercial tree plantings, golf course and associated buildings, fencing, native bush remnant. |
| Acquisition | The acquisition of the land that forms the present day domain took place over many years beginning in 1907. |

General Description

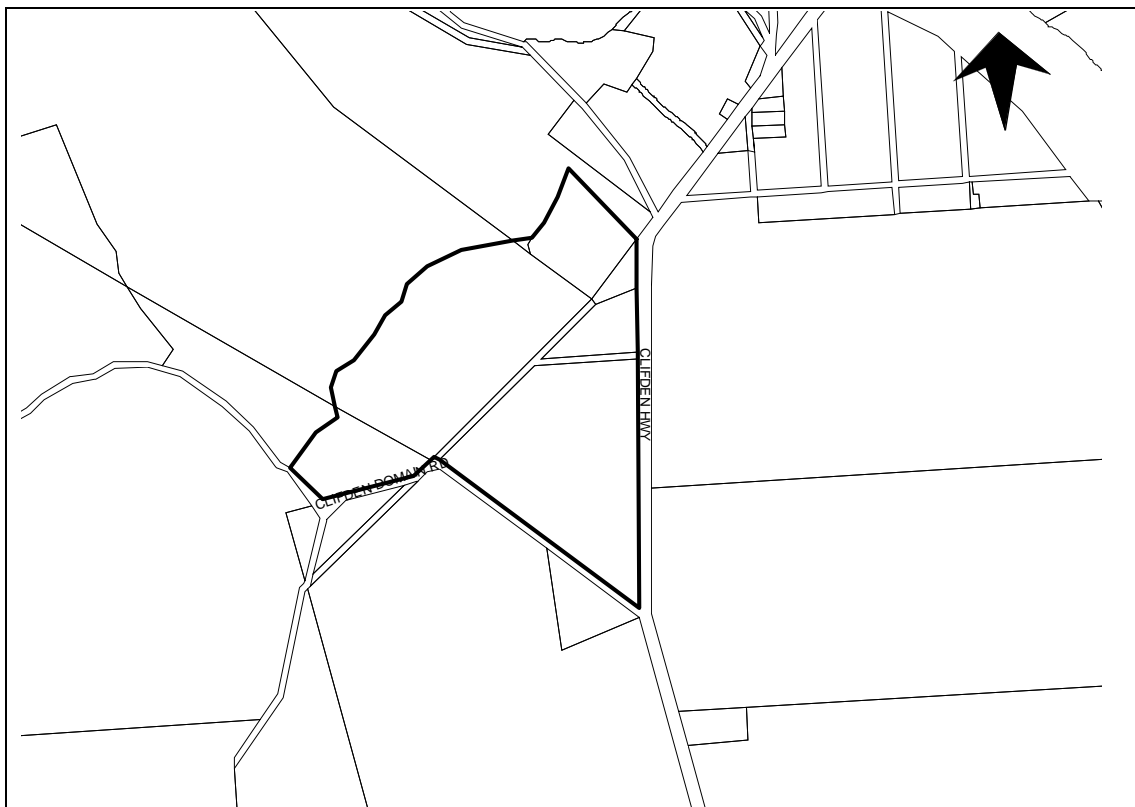
The Tuatapere golf course covers most of the Clifden Recreation Reserve (Clifden Domain). The golf course is maintained to a very high standard. The attractive golf course is enhanced by the native bush clad cliffs overlooking the golf course and the commercial forestry block. Some of the native species found within the bush on the reserve have been identified by Department of Conservation staff as being of significance to the District.

Specific Policies

- Continue to maintain the Clifden Recreation Reserve as an area of open space for casual recreation and organised sport.
- Allow Clifden Recreation Reserve to be leased.

Future Development Potential

Ensure pest plant and animal control is being carried out in the reserve, particularly in the native bush.



Clifden Recreation Reserve



File:

Clifden Bridge Reserve

Clifden 2

Description

| | |
|---------------------------------|--|
| Location | Bates Road, Clifden |
| Classification / Status | Legal Road |
| Area (ha) | Unknown |
| Legal Description | Not defined |
| Control | Ward |
| Previous Management Plan | No |
| Hierarchy | Tourist |
| Adjacent Land | This land is located adjacent to the historic Clifden Bridge at the end of Bates Road. |
| Facilities | Toilet, car parking. |
| Acquisition | |

General Description

Clifden Bridge Reserve is a well-used reserve adjacent to the historic Clifden Bridge containing a car park and toilet.

Specific Policies

- Continue to develop and maintain the Clifden Bridge Reserve as an area of open space for casual recreation.

Future Development Potential

Status quo.

(No Aerial Available)

Clifden Bridge Reserve



Jack and Mattie Bennett Memorial Park

File: 2038/0048

Tuatapere 1

Description

| | |
|---------------------------------|--|
| Location | Corner Half Mile Road and Erskine Street |
| Classification / Status | Recreation and Freehold |
| Area (ha) | 0.4138 |
| Legal Description | Pt Sec 83, Sec 82, Blk III, Alton SD |
| Control | Tuatapere Community Board |
| Previous Management Plan | This District Wide Reserve Management Plan replaces the Western Reserves Management Plan 1997 |
| Hierarchy | Township |
| Adjacent Land | This reserve is surrounded by residential properties and it lies adjacent to Erskine Street, Half Mile Road and unformed legal road. The Tuatapere Scenic Reserve lies opposite the unformed road. |
| Facilities | Children's Playground, Scout/Guide Den, Toilet, Picnic tables. |
| Acquisition | Part Sec 83 was acquired by the Wallace County in 1922 as an estate in fee simple. Sec 82 was originally a gravel reserve. In 1959 the land was set apart as a reserve for recreation purposes. |

General Description

This is a popular reserve for the children of Tuatapere, formerly called the Half Mile Road Playground. The location of the Scout and Guide den at the reserve ensures the playground is the centre of recreational activity for Tuatapere Children. The recent installation of the public toilet has added to the amenity value of the reserve especially for passing travellers on the Southern Scenic Route.

Specific Policies

- Continue to develop and maintain Jack and Mattie Bennett Memorial Park as an area of open space for casual recreation and children's playground.
- Camping is prohibited on Jack and Mattie Bennett Memorial Park as per the Camping Bylaw (2000).

Future Development Potential

Ensure the play equipment is safe and meets the needs of the local and visiting children. Water ponding is sometimes an issue on this reserve and may need to be addressed.



Jack and Mattie Bennett Memorial Park

File: 2023/0051

King Street Reserve

Tuatapere 2

Description

| | |
|---------------------------------|--|
| Location | King Street |
| Classification / Status | Recreation |
| Area (ha) | 3.7686 |
| Legal Description | Lot 1 DP 11284 Longwood SD |
| Control | Tuatapere Domain Board |
| Previous Management Plan | This District Wide Reserve Management Plan replaces the Western Reserves Management Plan 1997 |
| Hierarchy | Township |
| Adjacent Land | This land is adjacent to residential properties, farmland and the Town and Country Club. The reserve surrounds the Squash Club buildings. |
| Facilities | Two rugby fields, fencing, wind breaks, old changing buildings. |
| Acquisition | This land was gifted to the Crown in 1961 for the purposes of a recreation reserve. In the mid 80's the former Lot 1 DP 3696 was subdivided into two lots - Lots 1 and 2, DP 11284 to allow for the construction of the Squash Courts. |

General Description

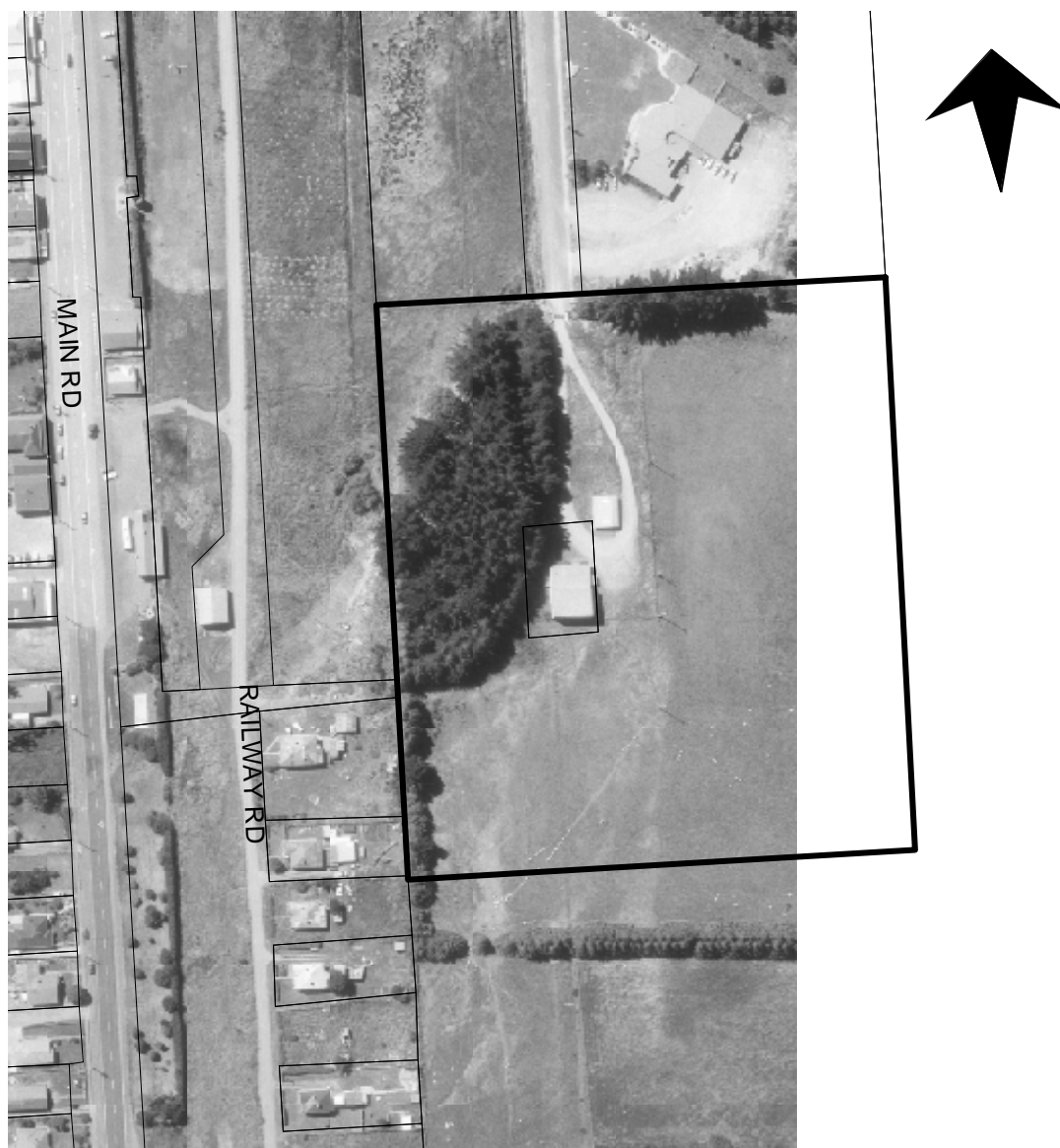
King Street Recreation Reserve is primarily used as a rugby training ground. The reserve consists of flat pastureland with wind breaks on all but the eastern boundary. The site is fenced and access is gained off King Street. The Reserve surrounds the section containing the Squash Club buildings and the boundary to this land is indiscernible from the surrounding reserve.

Specific Policies

- Continue to maintain the King Street Reserve as an area of open space for organised sport and casual recreation.

Future Development Potential

Encourage multiple use of the reserve and facilities.



King Street Reserve



File: 2025/0001

Greenheart Reserve

Tuatapere 3

Description

| | |
|---------------------------------|---|
| Location | Orawia Road |
| Classification / Status | Recreation |
| Area (ha) | 2.5165 |
| Legal Description | Sec 244 Blk XIII, Waiau SD |
| Control | Tuatapere Community Board |
| Previous Management Plan | This District Wide Reserve Management Plan replaces the Western Reserves Management Plan 1997 |
| Hierarchy | Township |
| Adjacent Land | This reserve is surrounded by residential and commercial properties. Boundary Creek runs through the reserve. |
| Facilities | Walking tracks, footbridges, amenity plantings and commercial tree plantings. |
| Acquisition | In 1978 the land was set apart as a reserve for recreation purposes. |

General Description

This is an important reserve located in the centre of Tuatapere. A walking track winds through the trees across Boundary Creek and links McVicar Street, King Street, Gillies Street and King Street. Native and exotic trees have been planted throughout the reserve.

Specific Policies

- Continue to develop and maintain Greenheart Reserve as an area of open space for casual recreation.
- Dogs may be exercised in Greenheart Reserve as per the Dog Control Bylaw (1997).

Future Development Potential

Control the vegetation within the reserve and remove pest plant species.

Develop clearer entrance into the reserve.

Maintain and develop tracks, footbridges and seating.

Prepare development plan for future of the reserve.



Greenheart Reserve



File: 2037/0078

Tuatapere Recreation Reserve

Tuatapere 4

| <u>Description</u> | |
|---------------------------------|--|
| Location | Elder Drive, Tuatapere |
| Classification / Status | Recreation |
| Area (ha) | 67.5204 |
| Legal Description | Sec 64 & 172, Blk III, Alton SD |
| Control | Tuatapere Domain Board |
| Previous Management Plan | This District Wide Reserve Management Plan replaces the Western Reserves Management Plan 1997 |
| Hierarchy | Township |
| Adjacent Land | Tuatapere Domain is adjacent to the Tuatapere Scenic Reserve and lies alongside the Waiau River. |
| Facilities | Clubrooms, town water supply, camping ground and associated buildings - power sites, kitchen facilities, toilet and shower facilities; two rugby fields, other buildings, fencing. |
| Acquisition | Sec 64 of the Domain was acquired in 1912 as a permanent reserve for recreation. Sec 172 was set apart for recreation purposes in 1970. |

General Description

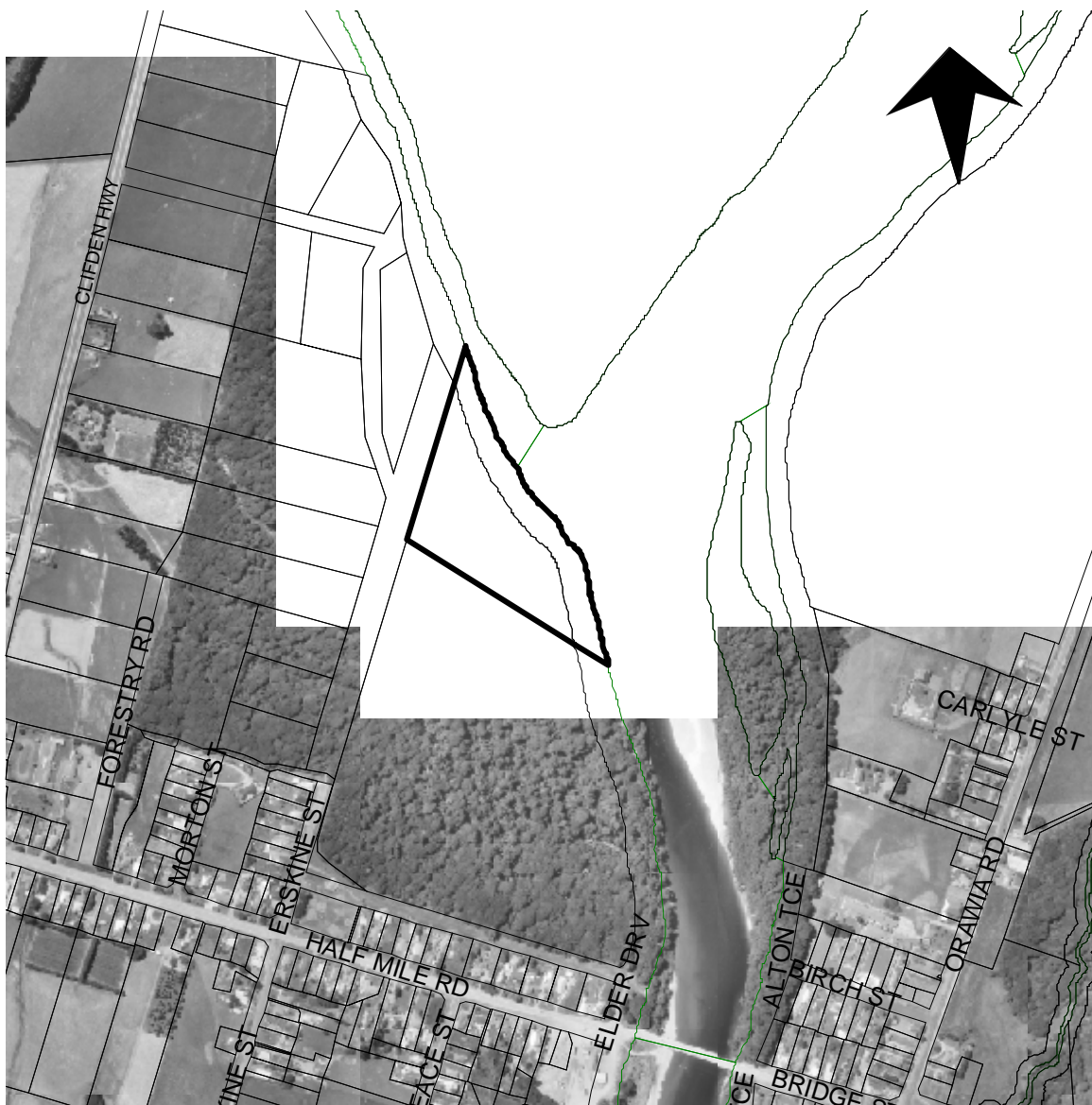
The Tuatapere Recreation Reserve, known locally as the Tuatapere Domain, is widely utilised by the local community and provides a wide range of recreational facilities including open space, rugby fields, camping facilities. The reserve is within a pleasant setting with the native bush and river as boundaries. The camping ground attracts visitors to the reserve and there are several large events held within the grounds. Several walking tracks leave from the domain through the native bush. Access to Manuka Island is via the Domain. Ongoing maintenance is the responsibility of the Tuatapere Reserve Committee.

Specific Policies

- Continue to develop and maintain the Tuatapere Domain as an area of open space for organised sport and casual recreation.

Future Development Potential

Status quo.



Tuatapere Recreation Reserve



File: 2037/0078

Manuka Island

Tuatapere 5

Description

| | |
|---------------------------------|--|
| Location | Access from Domain Road |
| Classification / Status | Recreation |
| Area (ha) | 49.7763 |
| Legal Description | Sec 28 Blk III, Alton SD |
| Control | Tuatapere Domain Board |
| Previous Management Plan | This District Wide Reserve Management Plan replaces the Western Reserves Management Plan 1997. |
| Hierarchy | Township |
| Adjacent Land | The Island is surrounded by the Waiau River. Land over the river to the west is Scenic Reserve. |
| Facilities | Fencing, native bush, access bridge. |
| Acquisition | Acquired in 1906 and in 1970 the classification was changed from scenic reserve to recreation reserve. |

General Description

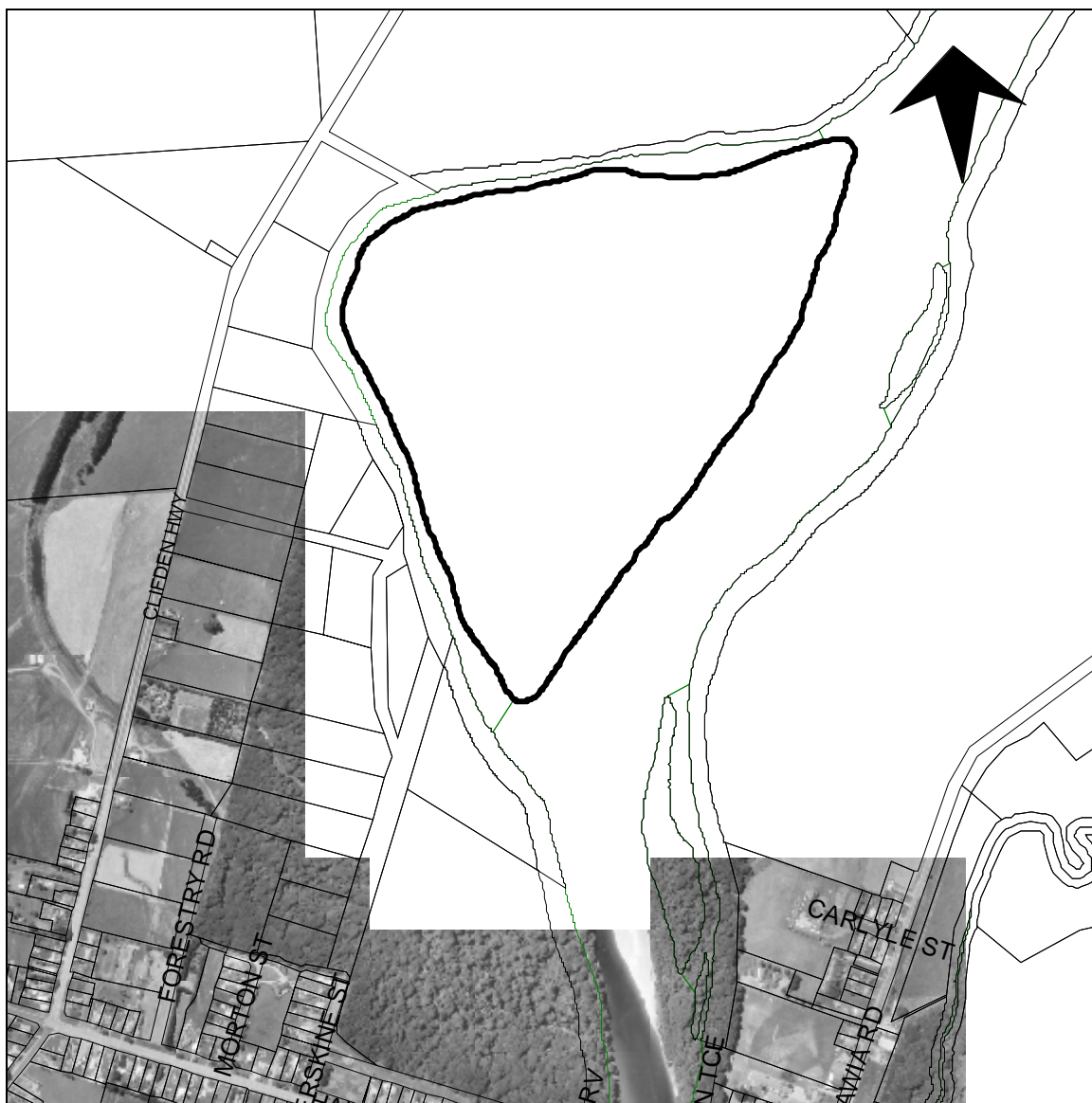
Manuka Island is located across a small channel of the Waiau River from the camping ground at the Domain. The whole Island is classified as recreation reserve. The majority of the Island is covered in mature native bush with an area close to the camping ground in grazed pasture. Boundaries are fenced. Some walking tracks are provided through the forest. Manuka Island provides access for people to fish the Waiau River.

Specific Policies

- Continue to develop and maintain Manuka Island as an area of open space for casual recreation.

Future Development Potential

Provide signage from the camping ground to encourage use of the walking tracks on the Island.



Manuka Island



File: 2037/0078

Elder Park

Tuatapere 6

Description

| | |
|---------------------------------|--|
| Location | Alton Road |
| Classification / Status | Recreation Reserve |
| Area (ha) | 9.8769 |
| Legal Description | Sec 13, Blk II, Alton SD |
| Control | Tuatapere Domain Board |
| Previous Management Plan | This District Wide reserve Management Plan replaces the Western Districts Reserve Management Plan 1997 |
| Hierarchy | Ward |
| Adjacent Land | This land is located north of the Conservation Department's Scenic Reserve. The land to the east and west of the reserve is under pasture. Alton Road forms the northern boundary. |
| Facilities | Amenity tree planting, fences |
| Acquisition | Elder Park was acquired in 1906 as a scenic reserve and in 1970 was reclassified as recreation reserve. |

General Description

Elder Park is named after Dr Elder who originally developed the reserve. The reserve offers a mixture of established exotic plantings in a pleasant setting. Vehicular access to the reserve is off Alton Road. Currently the reserve provides minimal casual recreational opportunities as there is no signage and access is limited. The reserve is fenced and has been grazed in the past. Elder Park is currently leased for a term of five years from 1 February 2000.

Specific Policies

- Continue to develop and maintain Elder Park as an area of open space for casual recreation.
- Allow Elder Park to be leased.

Future Development Potential

Investigate potential to develop Elder Park to provide good vehicle access with clearings for picnic areas. This reserve has the potential for greater use. Signage is needed to encourage visitors.



Elder Park



File: 2021/0042

Lions Playground

Tuatapere 7

Description

| | |
|---------------------------------|--|
| Location | Main Road, Tuatapere |
| Classification / Status | Local Purpose Reserve |
| Area (ha) | 0.0868 approx |
| Legal Description | Part of Lot 1 DP 10811 |
| Control | Tuatapere Community Board |
| Previous Management Plan | No |
| Hierarchy | Township |
| Adjacent Land | Lions Playground is off the main road entering Tuatapere from the south. |
| Facilities | Playground. |
| Acquisition | |

General Description

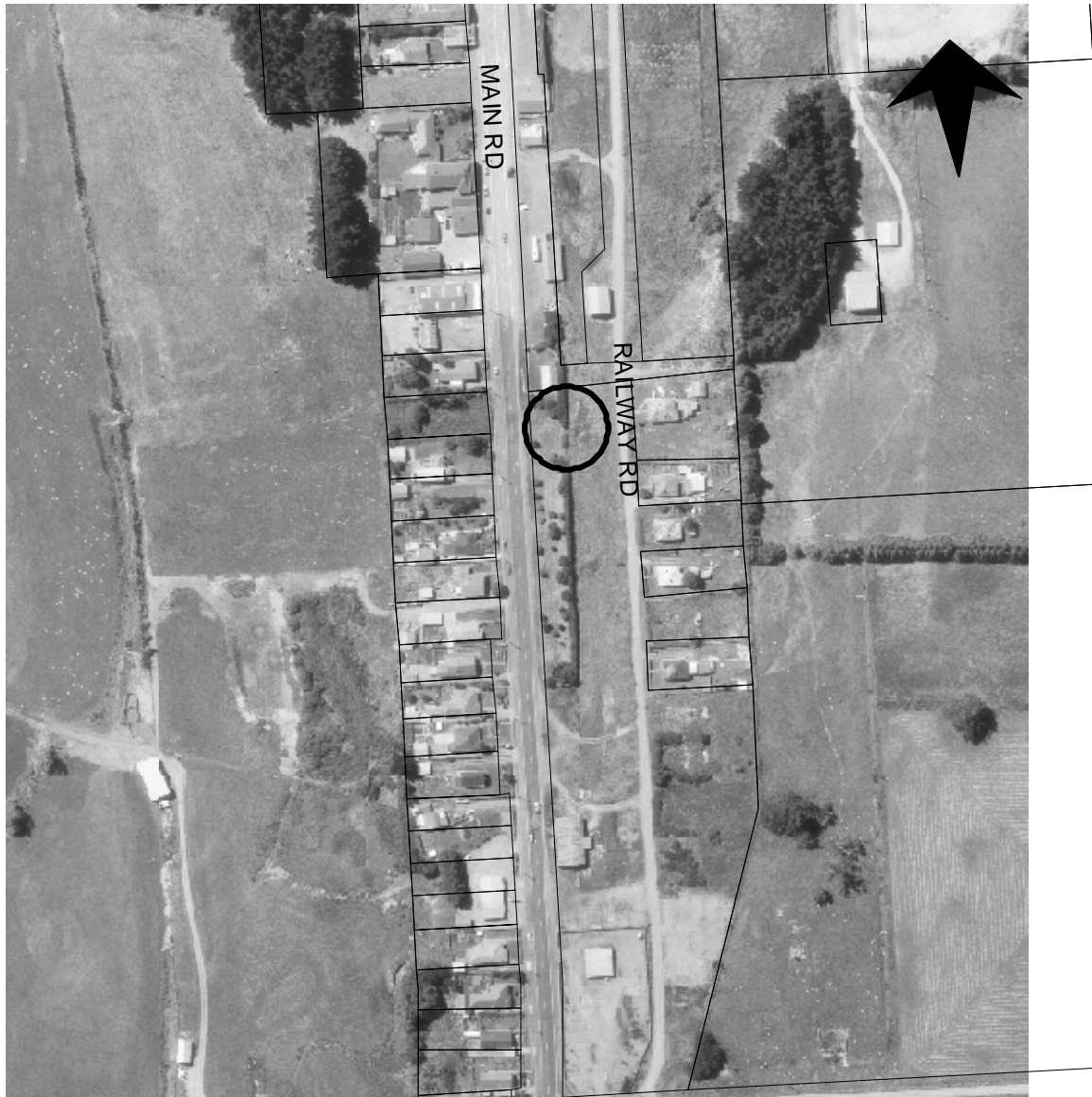
Lions Playground is a small playground with limited equipment at the entrance to Tuatapere from the south.

Specific Policies

- Continue to develop and maintain Lions Playground as an area of open space for casual recreation and children's play.

Future Development Potential

Status quo.



Lions Playground



File: 3409/0071

Monowai Village Reserve

Monowai 1

Description

| | |
|---------------------------------|---|
| Location | Turbine Drive, Monowai Drive |
| Classification / Status | Recreation |
| Area (ha) | 1.1250 |
| Legal Description | Lot 14, DP 15003 |
| Control | Ward |
| Previous Management Plan | No |
| Hierarchy | Township |
| Adjacent Land | The northern boundary of this reserve contains large shelter trees and exotic weed species. The reserve is located within the Monowai township. |
| Facilities | Playground, tennis court, tennis clubrooms, toilets, lights. |
| Acquisition | |

General Description

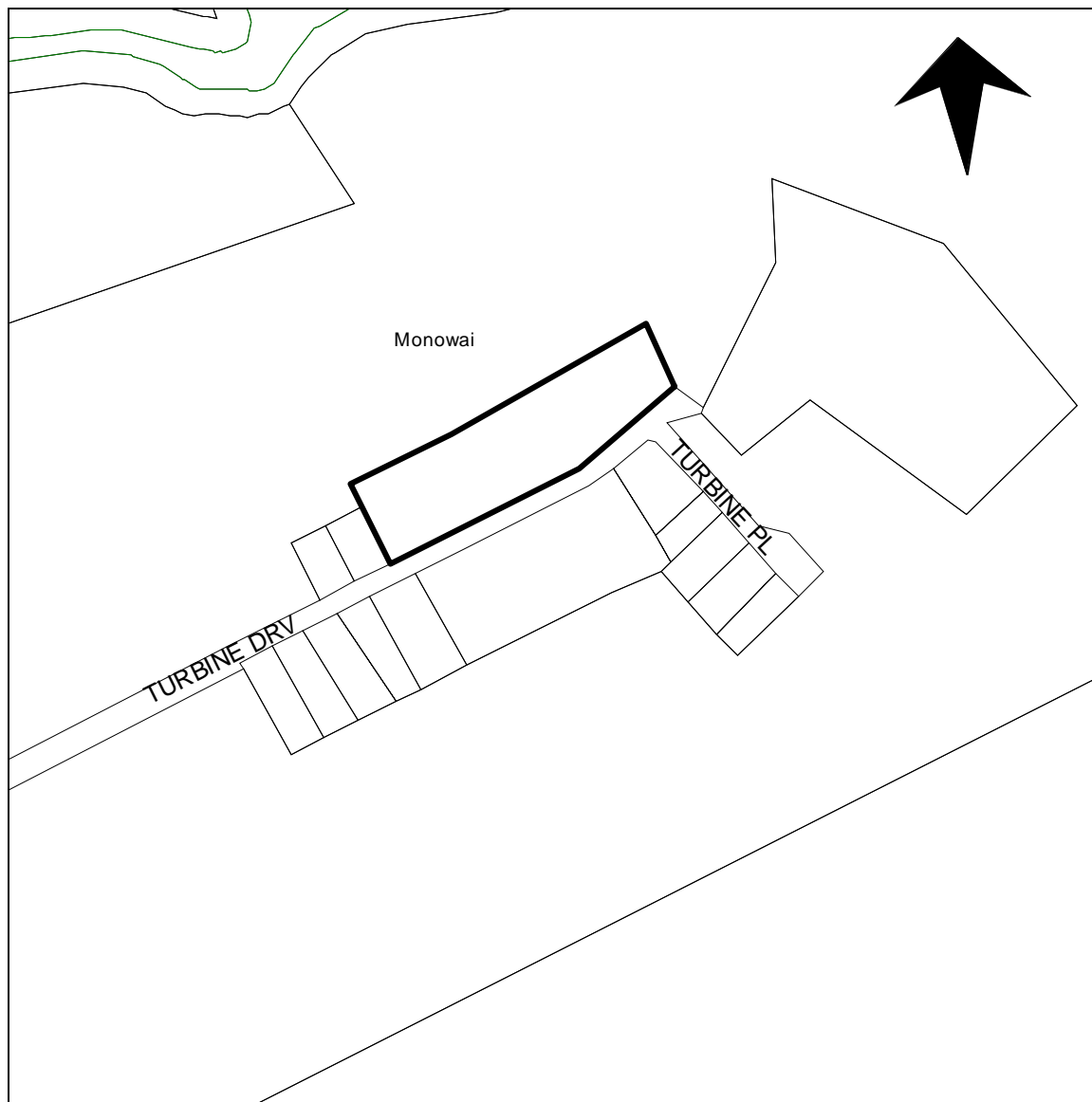
Monowai Village Reserve provides an area of open space with recreational facilities for the residents and visitors to Monowai Village. A small basic playground is located behind the fenced tennis court. A small building acts as the tennis shelter shed and the court is well fenced and contains a backboard for independent play. There is a good toilet block located on the reserve.

Specific Policies

- Continue to develop and maintain the Monowai Village Reserve as an area of open space for casual recreation and organised sport.

Future Development Potential

The playground contains several pieces of equipment that do not meet the current playground safety standards and it is recommended these be removed. Remove exotic weed species along the northern boundary and continue the native planting that has begun there.



Monowai Village Reserve