

WALLACETOWN WARD

AREA	RESERVE	PAGE
Makarewa	North Makarewa Reserve	2
Lochiel	Lochiel Recreation Reserve	4
Wallacetown	Ellerslie Square	6
	Western Shelterbelt Reserve	8
	Gwen Baker Park	10
	Gausstoun Reserve	12
	Southern Shelterbelt Reserve	14



File: 2501/0000

North Makarewa Reserve*Makarewa 1***Description**

Location	North Makarewa Road
Classification / Status	Recreation
Area (ha)	1.9172
Legal Description	Sec 68 Blk X New River Hun
Control	North Makarewa Reserve Committee
Previous Management Plan	No
Hierarchy	Ward
Adjacent Land	The North Makarewa Reserve is surrounded by farmland.
Facilities	No facilities.
Acquisition	Acquired in 1952 and set aside as a reserve for recreation purposes.

General Description

This area of open space was originally an old school site and is currently grazed by a neighbouring farmer. Some mature shelter trees border the east and west boundaries of the reserve.

Specific Policies

- Continue to maintain the North Makarewa Reserve as an area of open space for recreation purposes.

Future Development Potential

Status quo.



North Makarewa Reserve

File: 2523/0041

Lochiel Recreation Reserve

Lochiel 1

Description

Location	Smith Road
Classification / Status	Recreation
Area (ha)	3.0857
Legal Description	Secs 1, 2, & 3 Blk III Tn of Lochiel
Control	Lochiel Reserve Committee
Previous Management Plan	No
Hierarchy	Ward
Adjacent Land	This reserve is surrounded by farmland.
Facilities	Fenced, gates with 'Lochiel Domain' written on them.
Acquisition	Acquired in 1880 as a permanent reserve for recreation purposes.

General Description

This recreation reserve consists of a grazed paddock. The original Lochiel Domain gates remain.

Specific Policies

- Continue to maintain the Lochiel Recreation Reserve as an area of open space for recreation purposes.

Future Development Potential

Status quo.

Investigate future recreation requirements for the area.



Lochiel Recreation Reserve

File: 1658/0000

Ellerslie Square

Wallacetown 1

Description

Location	Dunlop and Kirkbride Streets
Classification / Status	Local Purpose Reserve (Community Centre) Recreation
Area (ha)	1.6155
Legal Description	Sec 1 - 17, 14 - 16 Blk XI Town of Wallacetown
Control	Wallacetown Community Board
Previous Management Plan	No
Hierarchy	Township
Adjacent Land	Ellerslie Square is adjacent to the Wallacetown Primary School and surrounded by road and residential properties.
Facilities	Community Centre, car parking, amenity planting, playing fields, seating.
Acquisition	Acquired in 1967 and 1992.

General Description

Ellerslie Square, located in the centre of Wallacetown provides the residents of the township with a good quality amenity. The reserve is attractively landscaped and the gardens are well maintained. Several sporting codes use the reserve and the new community centre provides a good multi use facility.

Specific Policies

- Continue to develop and maintain Ellerslie Square as an area of open space for casual and organised recreational activities.
- Camping is prohibited in Ellerslie Square as per the Camping Bylaw (2000).

Future Development Potential

Status quo. The closed portion of Aloway Street is to be reserves and incorporated into the reserve as one title.



Ellerslie Square

File: 1658/0002

Western Shelterbelt Reserve

Wallacetown 2

Description

Location	Kirkbride Street
Classification / Status	Recreation
Area (ha)	0.7003
Legal Description	Lots 66 & 71 DP 9298
Control	Wallacetown Community Board
Previous Management Plan	No
Hierarchy	Township
Adjacent Land	Western Shelterbelt Reserve is surrounded by farmland and residential properties.
Facilities	Fences, mature shelter trees.
Acquisition	Acquired in 1976 as a Recreation Reserve.

General Description

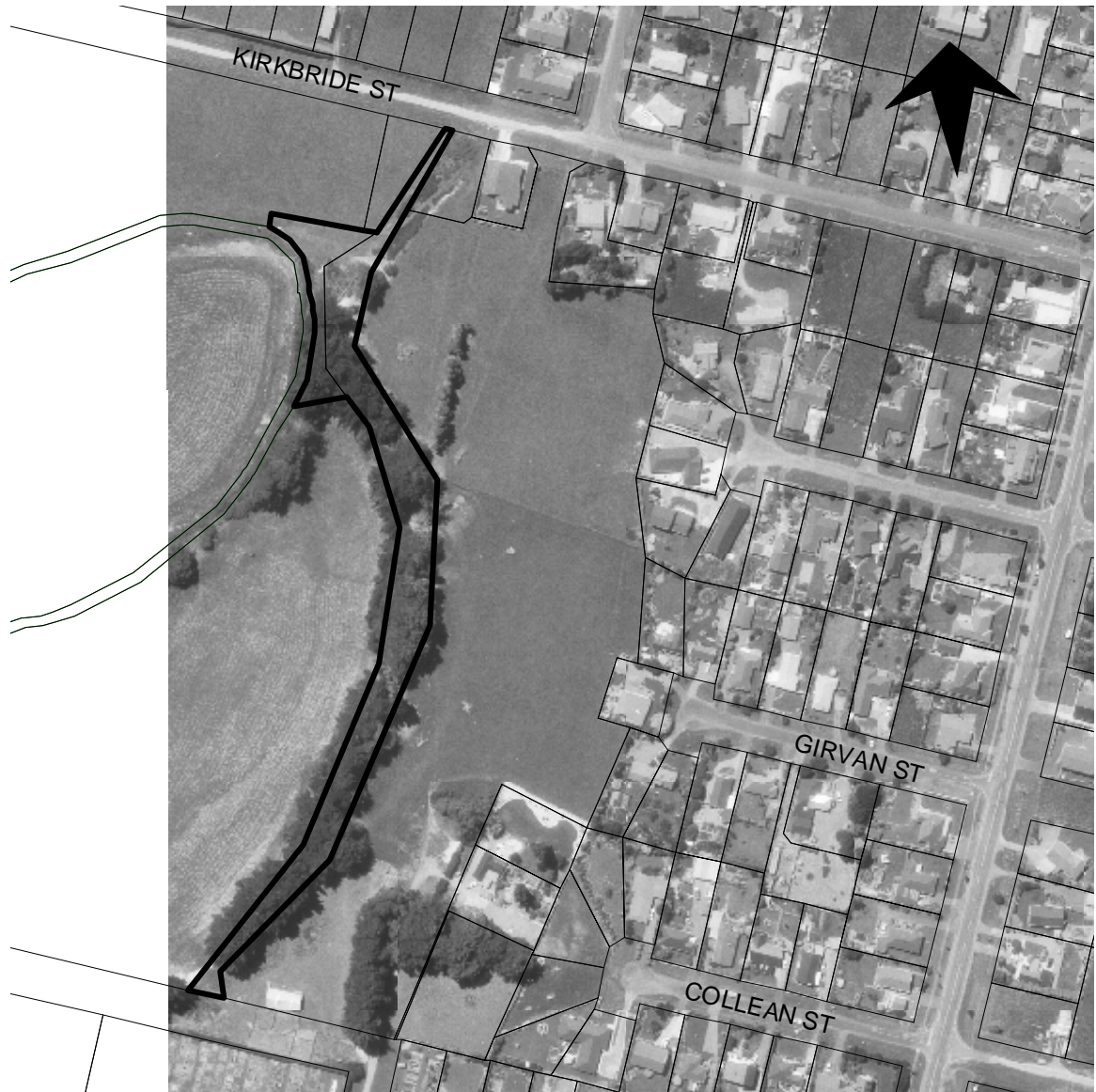
Western Shelterbelt Reserve is a long narrow strip of land at the top of the river terrace on the edge of Wallacetown that contains mature shelter trees. This land currently offers little recreational amenity value.

Specific Policies

- Continue to develop and maintain Western Shelterbelt Reserve as an area of open space for casual recreation.
- Camping is prohibited in Western Shelterbelt Reserve as per the Camping Bylaw (2000).

Future Development Potential

Incorporate the land into the township walkway proposal.
Investigate the future lifespan of the trees and look at replacing where practicable incorporating the walkway development.



Western Shelterbelt Reserve



File:

Gwen Baker Park

Wallacetown 3

Description

Location	Ailsa Street
Classification / Status	Cemetery Reserve
Area (ha)	0.2166 (approx)
Legal Description	(Part of) Sec 66 Blk XVI New River Hundred
Control	Wallacetown Community Board
Previous Management Plan	No
Hierarchy	Neighbourhood
Adjacent Land	Gwen Baker Park is adjacent to the cemetery on Ailsa Street, residential properties and farmland.
Facilities	Sign, playground, footpaths, rubbish bin, picnic tables.
Acquisition	

General Description

Gwen Baker Park is an excellent reserve at the south end of Wallacetown providing a very good playground within an attractive parklike setting.

Specific Policies

- Continue to develop and maintain Gwen Baker Park as an area of open space for casual recreation and children's play.

Future Development Potential

Status quo.



Gwen Baker Park



File:

Gausstoun Reserve

Wallacetown 4

Description

Location	Cumnock Street
Classification / Status	Legal Road
Area (ha)	0.7003
Legal Description	Part of unformed Aloway Street
Control	Wallacetown Community Board
Previous Management Plan	No
Hierarchy	Neighbourhood
Adjacent Land	Adjacent to the old cemetery, farmland and residential properties.
Facilities	Fences, grazed.
Acquisition	

General Description

This reserve is being developed adjacent to the old cemetery on the unformed roadway. The intention is to provide an attractive neighbourhood reserve for passive recreation with a physical link to the old cemetery. Gausstoun is the original name for Wallacetown.

Specific Policies

- Continue to develop and maintain the Gausstoun Reserve as an area of open space for casual recreation.

Future Development Potential

Develop the reserve, plant trees, provide seating etc.



Gausstoun Reserve

File: **Southern Shelterbelt Reserve**

Wallacetown 5

Description

Location	Ailsa Street, Wallacetown
Classification / Status	Crown Land
Area (ha)	0.4037
Legal Description	Blk XVI New River Hundred
Control	Crown (Wallacetown Community Board)
Previous Management Plan	No
Hierarchy	Neighbourhood
Adjacent Land	Adjacent to farmland and near residential. The Tomoporakau River runs along side the land.
Facilities	
Acquisition	

General Description

Local Community Board are negotiating an easement of this land in order to provide a link to the township walkway system and also shelter for the township.

Specific Policies

- Continue to develop and maintain the Southern Shelterbelt Reserve as an area of open space for casual recreation.

Future Development Potential

Plant trees, revegetate river banks, provide seating and walkway etc.



Southern Shelterbelt Reserve