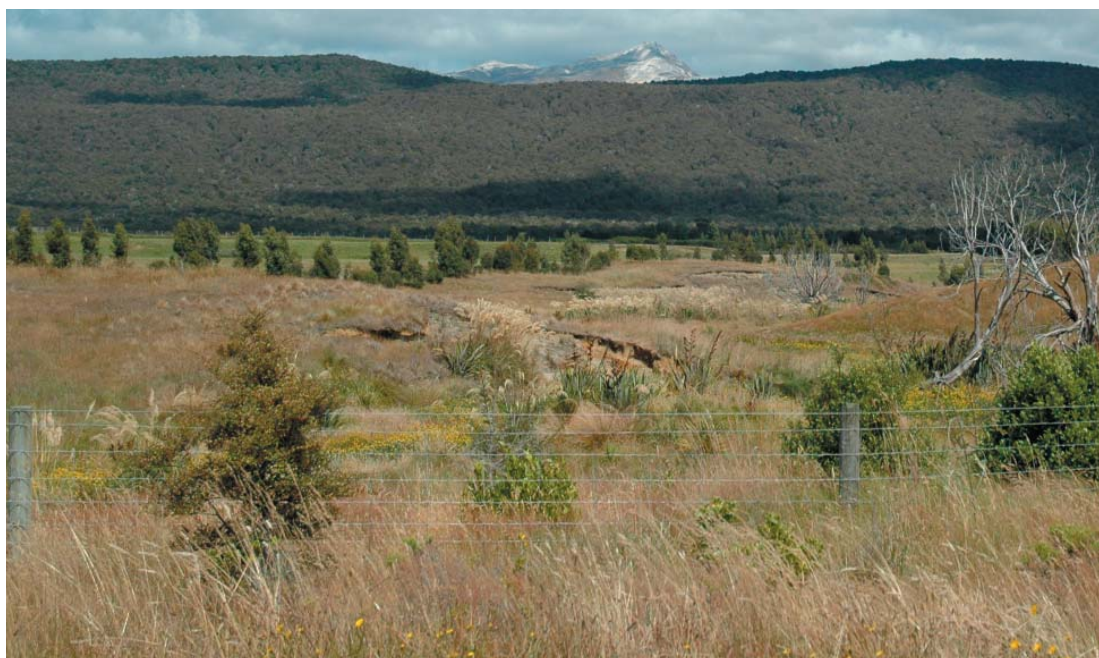


4. HOME CREEK RESTORATION AREA



LANDSCAPE CHARACTER

Situated between Hillside-Manapouri Road and the Waiau River. A very sinuous creek with steep carved banks and pools. Undergoing riparian enhancement programme - modified grassland and eroding banks have been recently planted with native riparian species. Surrounded by grassed paddocks with eucalypt shelterbelts and rural lifestyle blocks. Establishing fish and wildlife habitat.

KEY CHARACTERISTICS

- Tightly winding creek and steep scarp banks
- Developing indigenous riparian vegetation

LANDSCAPE CHARACTER SENSITIVITY:

HIGH

Natural Factors: Revegetation of riparian areas; stream processes

Cultural Factors: Surrounded by modified rural landscape

Quality/Condition: Enhancement programme will continue to restore landscape qualities

Aesthetic Factors: Attractive riparian plantings and form of creek

VISUAL SENSITIVITY:

MODERATELY LOW

Visibility: Visible from carpark off Hillside-Manapouri Road. Potentially visible from lifestyle properties above western boundary.

Populations: Likely to be limited to local recreational visitors.

LANDSCAPE VALUES

- Sinuous form of creek, riparian plantings and natural values associated with creek patterns and processes
- Identified for enhancement programme.