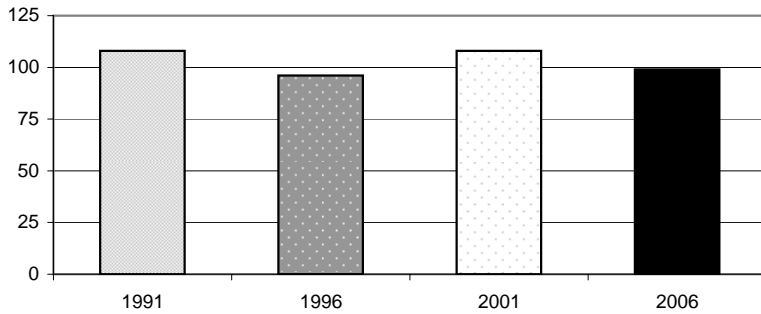


Browns Demographic Analysis 2006

Source: Statistics New Zealand Census

NB - Totals may be fewer than the total usual residents as meshblock data set is small and does not include figures for some areas due to confidentiality rules.

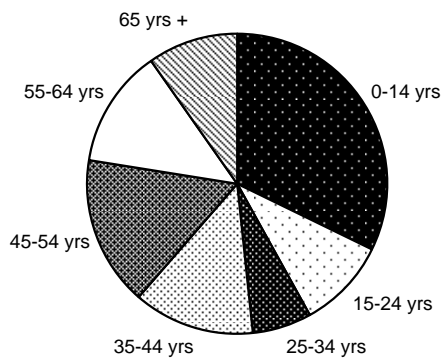
Usually Resident Population



Year	Total	% Change
1991	108	
1996	96	-12.5%
2001	108	11.1%
2006	99	-9.1%

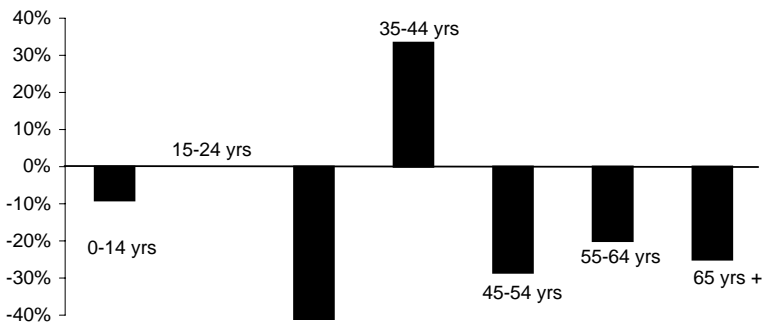
Sex	Total	%
Male	48	51.6%
Female	45	48.4%

Population By Age



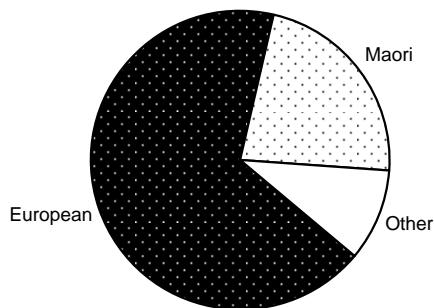
Age Group	Total	%
0-14 yrs	30	32%
15-24 yrs	9	10%
25-34 yrs	6	6%
35-44 yrs	12	13%
45-54 yrs	15	16%
55-64 yrs	12	13%
65 yrs +	9	10%

Change in Age Groups 2001-2006



Age Group	Total Change	% Change
0-14 yrs	-3	-9%
15-24 yrs	9	-
25-34 yrs	-9	-60%
35-44 yrs	3	33%
45-54 yrs	-6	-29%
55-64 yrs	-3	-20%
65 yrs +	-3	-25%

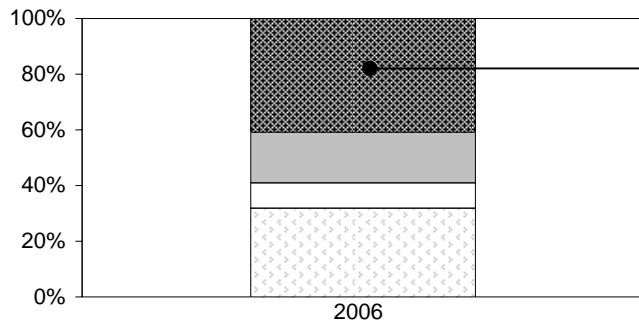
Ethnic Composition



Ethnicity	Total	%
European	81	68%
Maori	27	23%
Pacific Peoples	0	0%
Asian	0	0%
MELAA	0	0%
Other	12	10%

MELAA = Middle Eastern, Latin American and African

Employment Status: 15 Years and Over



	Total	%
Paid Employee	27	38%
Employer	12	17%
Self-Employed	6	8%
Unpaid Worker	0	0%
Not in Labour Force	21	29%
Unemployed	6	8%
Not Stated	0	0%

Total Number of Dwellings and Ownership

	Total	%
Owned or Partly Owned	21	64%
Not Owned	6	18%
Held in Family Trust	6	18%
Not Elsewhere Included	0	0%
Total	33	100%