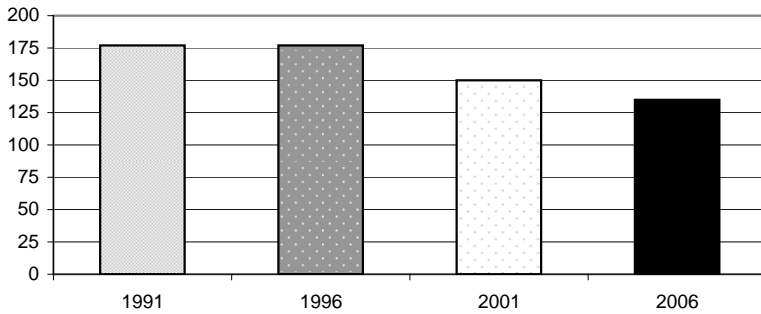


Colac Bay Demographic Analysis 2006

Source: Statistics New Zealand Census

NB - Totals may be fewer than the total usual residents as meshblock data set is small and does not include figures for some areas due to confidentiality rules.

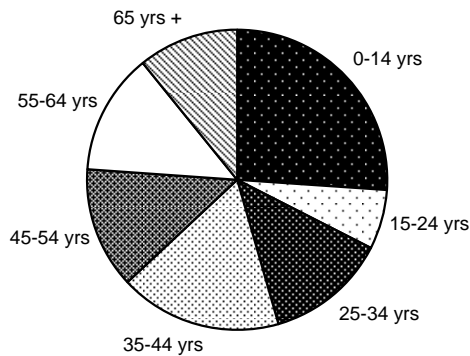
Usually Resident Population



Year	Total	% Change
1991	177	
1996	177	0.0%
2001	150	-18.0%
2006	135	-11.1%

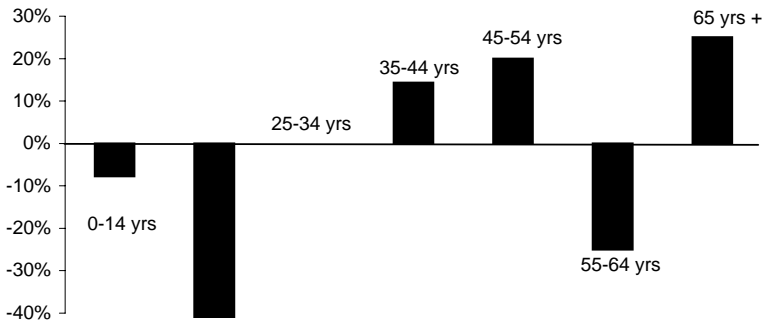
Sex	Total	%
Male	72	54.5%
Female	60	45.5%

Population By Age



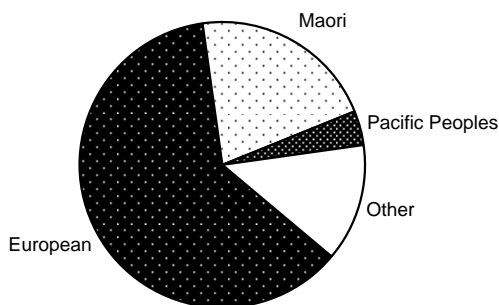
Age Group	Total	%
0-14 yrs	36	26%
15-24 yrs	9	7%
25-34 yrs	18	13%
35-44 yrs	24	17%
45-54 yrs	18	13%
55-64 yrs	18	13%
65 yrs +	15	11%

Change in Age Groups 2001-2006



Age Group	Total Change	% Change
0-14 yrs	-3	-8%
15-24 yrs	-9	-50%
25-34 yrs	0	0%
35-44 yrs	3	14%
45-54 yrs	3	20%
55-64 yrs	-6	-25%
65 yrs +	3	25%

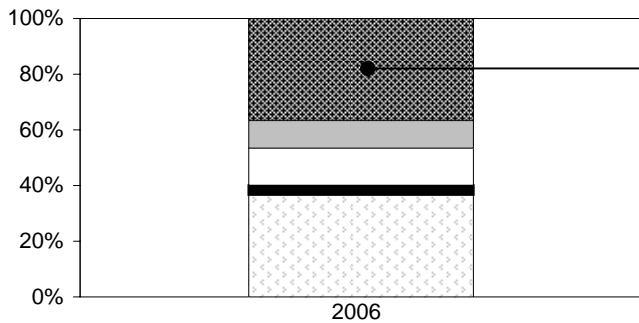
Ethnic Composition



Ethnicity	Total	%
European	96	62%
Maori	33	21%
Pacific Peoples	6	4%
Asian	0	0%
MELAA	0	0%
Other	21	13%

MELAA = Middle Eastern, Latin American and African

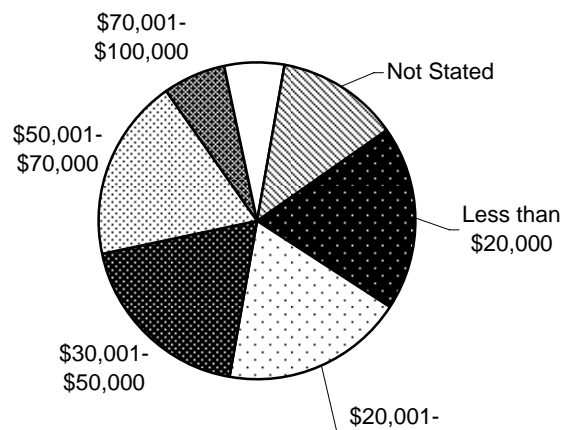
Employment Status: 15 Years and Over



	Total	%
Paid Employee	33	34%
Employer	9	9%
Self-Employed	12	13%
Unpaid Worker	3	3%
Not in Labour Force	33	34%
Unemployed	0	0%
Not Stated	6	6%

Household Income

	Total	%
Less than \$20,000	9	19%
\$20,001-\$30,000	9	19%
\$30,001-\$50,000	9	19%
\$50,001-\$70,000	9	19%
\$70,001-\$100,000	3	6%
Over \$100,001	3	6%
Not Stated	6	13%



Total Number of Dwellings and Ownership

	Total	%
Owned or Partly Owned	27	53%
Not Owned	12	24%
Held in Family Trust	9	18%
Not Elsewhere Included	3	6%
Total	51	100%