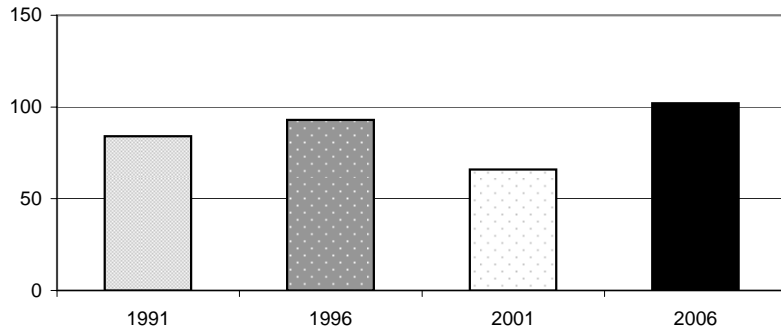


Garston Demographic Analysis 2006

Source: Statistics New Zealand Census

NB - Totals may be fewer than the total usual residents as meshblock data set is small and does not include figures for some areas due to confidentiality rules.

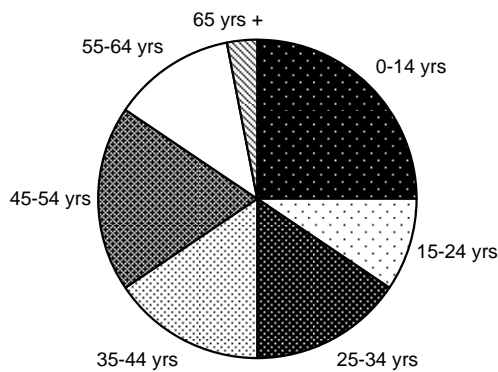
Usually Resident Population



Year	Total	% Change
1991	84	
1996	93	9.7%
2001	66	-40.9%
2006	102	35.3%

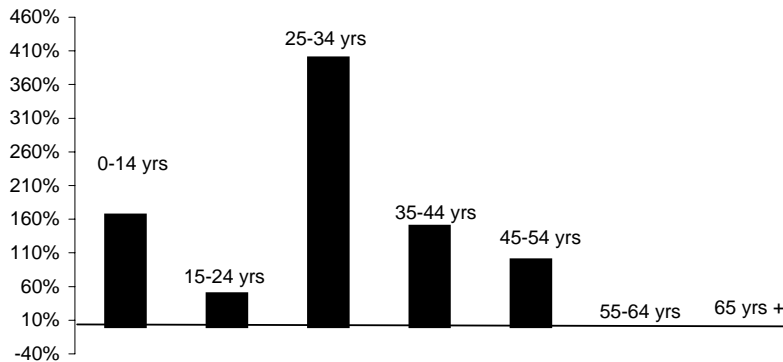
Sex	Total	%
Male	54	52.9%
Female	48	47.1%

Population By Age



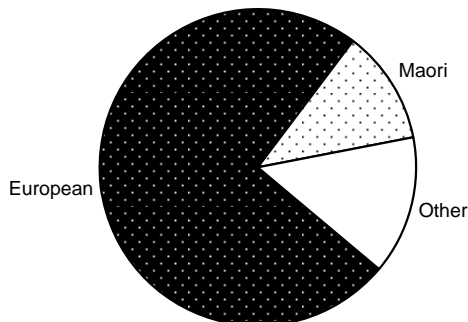
Age Group	Total	%
0-14 yrs	24	25%
15-24 yrs	9	9%
25-34 yrs	15	16%
35-44 yrs	15	16%
45-54 yrs	18	19%
55-64 yrs	12	13%
65 yrs +	3	3%

Change in Age Groups 2001-2006



Age Group	Total Change	% Change
0-14 yrs	15	167%
15-24 yrs	3	50%
25-34 yrs	12	400%
35-44 yrs	9	150%
45-54 yrs	9	100%
55-64 yrs	0	0%
65 yrs +	0	0%

Ethnic Composition

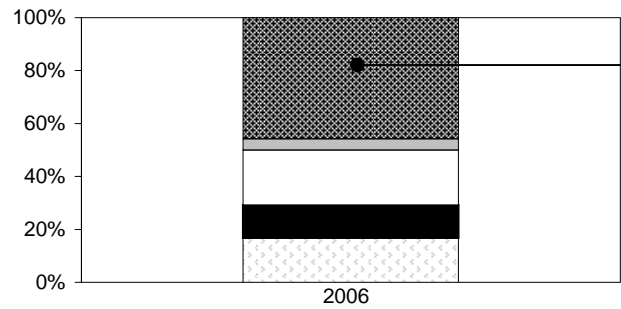


Ethnicity	Total	%
European	78	74%
Maori	12	11%
Pacific Peoples	0	0%
Asian	0	0%
MELAA	0	0%
Other	15	14%

MELAA = Middle Eastern, Latin American and African

NB - as above

Employment Status: 15 Years and Over



	Total	%
Paid Employee	33	42%
Employer	3	4%
Self-Employed	15	19%
Unpaid Worker	9	12%
Not in Labour Force	12	15%
Unemployed	3	4%
Not Stated	3	4%

Total Number of Dwellings and Ownership

	Total	%
Owned or Partly Owned	9	30%
Not Owned	12	40%
Held in Family Trust	3	10%
Not Elsewhere Included	6	20%
Total	30	100%