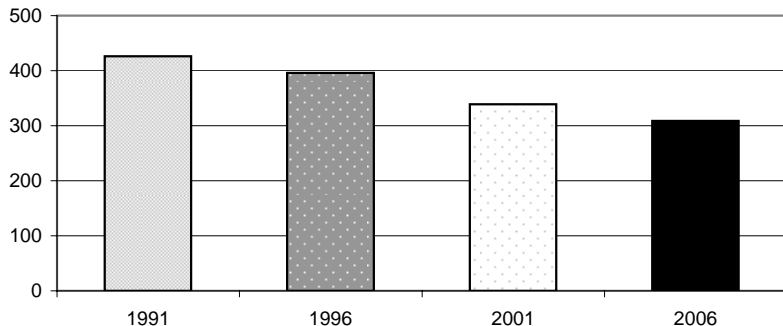


Nightcaps Demographic Analysis 2006

Source: Statistics New Zealand Census

NB - Totals may be fewer than the total usual residents as meshblock data set is small and does not include figures for some areas due to confidentiality rules.

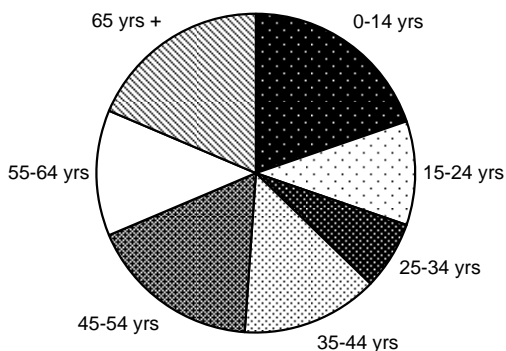
Usually Resident Population



Year	Total	% Change
1991	426	
1996	396	-7.6%
2001	339	-16.8%
2006	309	-9.7%

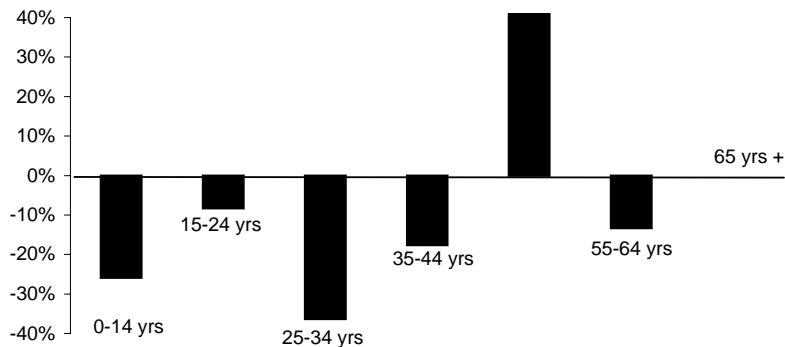
Sex	Total	%
Male	171	55.3%
Female	138	44.7%

Population By Age



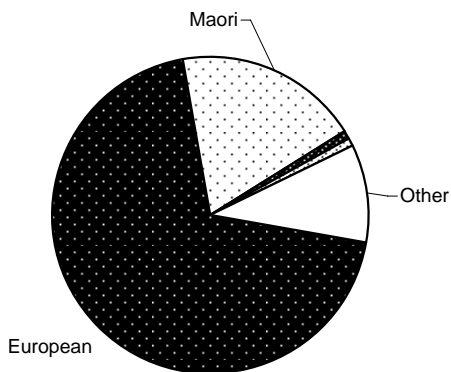
Age Group	Total	%
0-14 yrs	60	20%
15-24 yrs	33	11%
25-34 yrs	21	7%
35-44 yrs	42	14%
45-54 yrs	54	18%
55-64 yrs	39	13%
65 yrs +	57	19%

Change in Age Groups 2001-2006



Age Group	Total Change	% Change
0-14 yrs	-21	-26%
15-24 yrs	-3	-8%
25-34 yrs	-12	-36%
35-44 yrs	-9	-18%
45-54 yrs	21	64%
55-64 yrs	-6	-13%
65 yrs +	0	0%

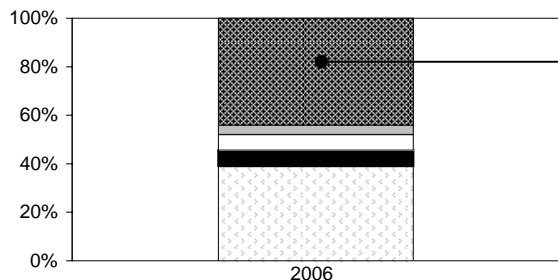
Ethnic Composition



Ethnic Group	Total	%
European	231	69%
Maori	63	19%
Pacific Peoples	3	1%
Asian	3	1%
MELAA	0	0%
Other	33	10%

MELAA = Middle Eastern, Latin American and African
 May add to more than population total as respondents could choose more than one ethnic group

Employment Status: 15 Years and Over



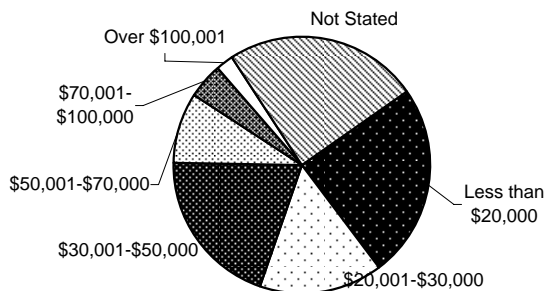
	Total	%
Paid Employee	102	40%
Employer	9	4%
Self-Employed	15	6%
Unpaid Worker	15	6%
Not in Labour Force	90	36%
Unemployed	9	4%
Not Stated	12	5%

Employment by Industry

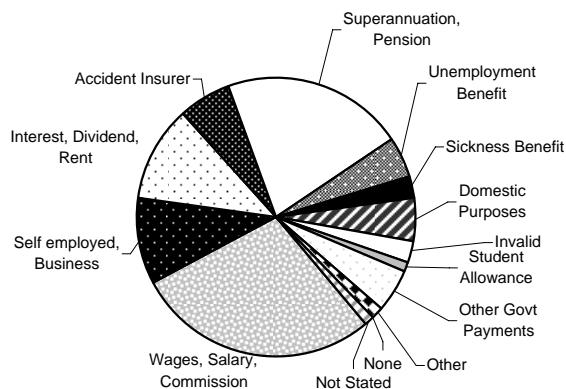
	Total	%
Agriculture, Forestry & Fishing	33	26%
Mining, Manufacturing, Electricity, Gas & Water Supply	24	19%
Construction	12	9%
Wholesale & Retail Trade	15	12%
Accommodation, Cafes & Restaurants	3	2%
Transport & Storage, Communication Services	15	12%
Finance, Insurance, Property & Business Services	6	5%
Government, Education, Health, Community, Social & Personal Services	18	14%
Other	3	2%

Household Income

	Total	%
Less than \$20,000	33	24%
\$20,001-\$30,000	21	16%
\$30,001-\$50,000	27	20%
\$50,001-\$70,000	12	9%
\$70,001-\$100,000	6	4%
Over \$100,001	3	2%
Not Stated	33	24%



Sources of Household Income



	Total	%
Wages, Salary, Commission	69	28%
Self employed, Business	24	10%
Interest, Dividend, Rent	27	11%
Accident Insurer	15	6%
Superannuation, Pension	51	21%
Unemployment Benefit	12	5%
Sickness Benefit	6	2%
Domestic Purposes	12	5%
Invalid	6	2%
Student Allowance	3	1%
Other Govt Payments	12	5%
Other	3	1%
None	0	0%
Not Stated	3	1%

Total Number of Dwellings and Ownership

	Total	%
Owned or Partly Owned	78	58%
Not Owned	42	31%
Held in Family Trust	3	2%
Not Elsewhere Included	12	9%
Total	135	100%