

the **FIRST EDITION**

*Christmas* **2011**

Southland District Council Newsletter



*Looking back at the year gone by for  
Council and its communities*



Mayor Frana Cardno

## PRIDE IN OUR COMMUNITIES

*It has been quite a year. Personally it has been tough and that has been the case as well for the nation, with the Christchurch earthquake. But all of us need to move forward and there's plenty going on in Southland.*

The next few months are going to be extremely busy for Council, with the notification of the District Plan scheduled for the end of March and the draft Long Term Plan going out for public consultation in April-May.

These two documents are extremely important for the future of the District and I strongly encourage residents and ratepayers to take an interest and have their say.

A lot of work has already gone into these documents, with Council having worked with Environment Southland for a few years to put together both Environment Southland's Regional Policy Statement and our District Plan. This has been beneficial in many ways, not least on the financial side.

The Regional Policy Statement is planned to come out early next year as well. The District Plan gives effect to the Regional Policy Statement and so is very closely interlinked.

Meanwhile staff have also been

working on the Asset Management Plans which underpin the Long Term Plan. A lot of effort has gone into looking at the District's assets and planning for their future, and again feedback is essential.

Council is working with the community on a multitude of projects and significant resources are being put into the Around the Mountain Cycle Trail, Rakiura Information and Heritage centre, and Curio Bay/Porpoise Bay visitor and camping opportunities to name a few.

Other successes this year include the introduction of kerbside recycling and I commend those residents who are part of the scheme as we are recycling much more than before.

Our libraries are among our most popular services and we are working hard to keep them up-to-date with technology. I enjoy being able to go into any library in the southern region and be able to borrow a book from other libraries, such as Dunedin. It is a wonderful service.

The water and wastewater schemes in Edendale and Wyndham were completed in the past year and work has continued on upgrading various water schemes throughout the district.

There have been challenges with all of this, and in particular with the loss of Government subsidies for water and sewerage schemes. This makes it even harder for our communities to afford these schemes, yet we are being legislated to provide them.

Roading funding has also been flatlined by the New Zealand Transport Agency and so we have to look for innovative and cost-saving ways to carry out our roading programme. This will be one of the big issues in the Long Term Plan.

There are also developments being planned that could threaten our environment and all of us must think about the future and what we are leaving for our children and grandchildren.

I want to thank our community boards and CDA members for the hard work they put in for their community.

We are all working together for a better Southland.



*On behalf of myself and Council I would like to wish all residents of the Southland District a happy and peaceful Christmas, to be enjoyed with family and friends in the southern sunshine. Safe holidays to everyone and a Happy New Year.*

*Mayor Frana Cardno*

*Merry Christmas*

## SIGNIFICANT PROGRESS

*Every year Christmas creeps up quicker and quicker. I'm not sure whether this is because as you get older time becomes more valuable or because you are doing things that you enjoy doing. Time flies past and before you know it another year has been assigned to history.*

The past 12 months has been a very busy year within Council. The Christchurch earthquake in February has significantly impacted on our business and work programme. The impact of this traumatic, devastating and tragic event will have ramifications for years if not decades to come.

I was justifiably proud of staff during this event and for the many months following because a large number of them took on the challenge to go to Christchurch and assist in what could only be called a very stressful environment. Staff also responded very well in ensuring our full obligations locally, both relating to the Christchurch earthquake and Council's ongoing operational requirements, were fully met. A lot of staff went well beyond the normal call of duty. The residents and ratepayers should take comfort in the fact that they have Council staff who are prepared to go the extra mile when required.

During this past 12 months we have made significant progress on a number of projects. This includes the new district plan, water and wastewater projects and the introduction of recycling through a significant part of the district. A number of these projects and others which we have achieved have been done in collaboration with our neighbouring councils creating additional value.

At the beginning of any three-year term Council has a strategic retreat and tours the district.

With the Southland District covering more than 10% of New Zealand there are patches where individual councillors may not visit in their day to day life and it is incredibly important that they get the opportunity to re-familiarise themselves with the district's nooks and crannies. As part of the strategic retreat we looked at Council's vision, mission, Council community outcomes and guiding principle. This work will flow into Council's long-term plan giving all ratepayers and residents the opportunity to contribute prior to Council finalising it in June.

Council intends to retain its guiding principle "people first." They feel this is an excellent principle to live up to as we are predominantly in the business of providing services to people whether it be parks, water, recycling, halls, libraries, roads or the myriad of other services delivered 365 days a year. "People first" also aligns very well with Council's Maori name "Te Rohe Potae O Murihiku" which broadly translated means the umbrella or shelter of protecting the people of Southland. Council and Council staff put a lot of effort into trying to live up to these principles.

Council is proposing to keep its mission the same "Working together for a better Southland" and has changed its vision to "Thriving, healthy communities supported by a leading Council". Council would be keen on your feedback.



David Adamson

Councils and Council staff get a hard time and frequently appear to be the butt of a number of jokes. The services provided by Council are essential for the well-being of our society and I believe Southland District is served by an excellent array of staff who strive to deliver to Southland's residents and ratepayers a service that is affordable, reliable, sustainable, legal and fit for purpose. We don't necessarily get it right all the time but we certainly endeavour to do the best for all of our communities in the long term.

On a lighter note I wish you all the best for Christmas and hope you have the opportunity to have an enjoyable and relaxing break with friends and family.

Christmas is an excellent time to read, eat, socialise and exercise. It's important that we keep the balance over Christmas so that we can come back refreshed, batteries recharged and ready to face another year which I'm sure will fly past as has 2011.

Christmas is an excellent time to sit back and relax with a good novel but there are also some excellent non-fiction books that may interest a number of you. The few that I've enjoyed over the last 12 months have included "When the Rivers Run Dry", "Natural Capitalism", "Wool to Weta" and "The Spirit Level," just to name a few that you may wish to follow up if you find yourself a loose end.

On behalf of Council and Council staff, we wish you all a happy healthy and safe Christmas break and we look forward to continuing to serve you in the New Year.

# Planning for the *Future*

## DISTRICT PLAN REVIEW

*Ongoing progress is being made with the District Plan review which is on track to be publicly notified in 2012. Methods drafting was the main focus of this year's work with workshops involving Councillors from Southland District and Environment Southland taking place to complete the third stage of the project.*

The District Plan sets out Southland District Council's policies and objectives for managing the natural and physical resources of the Southland District. Consisting of maps, objectives, policies and rules, the District Plan sets out which activities are permitted and which require resource consent in the area. The public notification stage, which is set to take place in a few months time, is the final phase of the review.

"The District Plan is the primary document that manages land use and development within the Southland District,"

senior policy planner Luke McSoriley said. "The document is extremely important as it outlines how all properties within the District may be utilised."

Council is required to prepare a District Plan under the Resource Management Act 1991. "The new District Plan will be the second generation Southland District Plan since the RMA was enacted," Mr McSoriley said. "Once the proposed Plan is notified to members of the public next year, they will have the opportunity to make submissions."



### DPR WEBPAGE UPDATE

Council has recently updated the Southland District Plan review webpage which can be accessed via the District Plan review button on the homepage of Southland District Council's website.

Updates on the progress of the District Plan review project and key dates will be posted on the webpage on an ongoing basis.



### DPR Contact List

*Council established a District Plan review contact list during the Issues and Options stage of the project in 2009.*

Updates on the review project will be sent to people and organisations on this list as the project progresses.

*If you would like to add your contact details to the list please contact Council's resource management team.*

# DISTRICT PLAN REVIEW AND LANDSCAPES



*Section 6 of the Resource Management Act 1991 requires the protection of outstanding natural features and landscapes from inappropriate subdivision, use and development as a matter of national importance.*

Southland District Council needs to identify outstanding landscapes and develop methods for their sustainable management through the revised Southland District Plan.

The Act also recognises a second tier of landscapes under Section 7 - landscapes with important visual amenity values.

During 2005/2006, Southland District Council and Environment Southland jointly commissioned Boffa Miskell Limited, a planning, ecology and landscaping

consultancy firm, to assess the landscape values along the Southland Coast and within the Te Anau Basin.

The landscape reports review the landscape values including character, sensitivity and visual elements.

The reports recommend a range of planning approaches for managing landscape values along the Southland Coast and within the Te Anau Basin, providing a basis for the second generation Southland District Plan approach to landscapes.

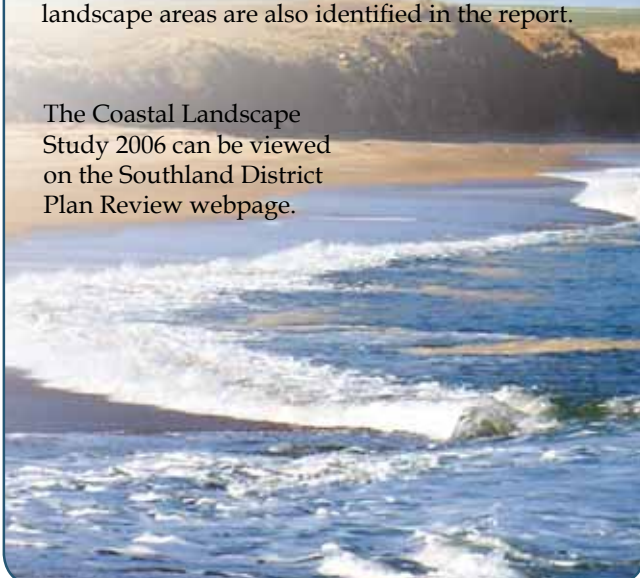
## COASTAL

### COASTAL LANDSCAPE STUDY 2006

The Southland Coastal Landscape Study assesses landscape values within the Coastal Resource Area of the existing Southland District Plan.

The report identifies four distinct character areas within the coast - Te Waewae, Riverton, Estuaries and Southwest Catlins - highlighting outstanding natural landscapes and features within these character areas. A number of significant visual landscape areas are also identified in the report.

The Coastal Landscape Study 2006 can be viewed on the Southland District Plan Review webpage.



## TE ANAU

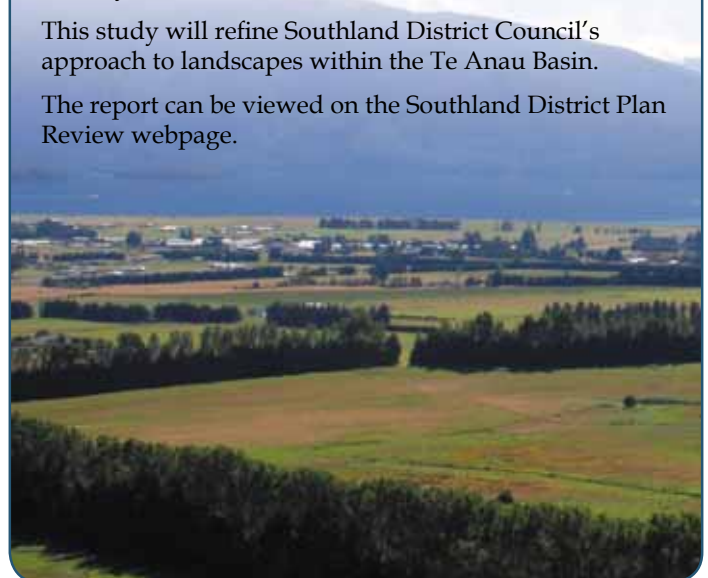
### TE ANAU LANDSCAPE CAPACITY REPORT 2006

The Te Anau Landscape Capacity Report 2006 assesses landscape values within the Te Anau Basin.

Council has commissioned a further landscape study relating to the Te Anau Basin. The draft Te Anau Scenic Resource Area Visual Assessment Study is currently being reviewed and is due to be approved by Council in January 2012.

This study will refine Southland District Council's approach to landscapes within the Te Anau Basin.

The report can be viewed on the Southland District Plan Review webpage.



# Economic

# Lifelines

## FUNDING SOUTHLAND'S ROADS INTO THE FUTURE

*As 2011 draws to a close, Council is preparing for a busy year ahead next year when the current three year roading programme that has governed all actions relating to the provisions of road maintenance and renewal in the district ends.*

Looking ahead to 2012, services and assets group manager Erik Barnes said that Council is now working in a financially constricted environment. This is largely due to the New Zealand Transport Agency's (NZTA) recent indication through the current Government Policy Statement on Land Transport Funding that the focus and level of expenditure in different classes will be less.

"We need to balance our service level and maintenance with the affordability to ratepayers and long term management of the network," Mr Barnes said.

NZTA's funding needs to be matched by Council funding so the level of Council's matching expenditure has to be managed as this equates to the rate requirements on the Southland community. Council spends approximately \$25 million on roading per year.

"We will continue to focus on the main long-term asset life of the roading network and level of service for our ratepayers. Levels of service that are currently provided need to be adjusted accordingly to reflect our future flat-lined funding position over the coming three years," Mr Barnes said.

The reduction in the funding assistance rate (FAR) as well as the increasing cost of oil needs to be taken into account. "Everything on the road is oil-based so it's costing more to do the same amount of work," Mr Barnes said.

The adoption of a flat-lined roading programme is to address the issues proficiently. "We're trying to manage internal debt and get back to a solid space with how we manage maintenance and operations. It's a matter of paying for what we're doing without incurring more debt," Mr Barnes explained.

Council will focus on developing innovative ways of managing the roading network when the three year programme begins. "This will involve looking at more cost effective maintenance and renewal programmes and working collaboratively with NZTA," Mr Barnes said. "We will look at more efficient processes in how to manage the assets and extend the asset life."

Going forward into 2012, Mr Barnes believes that there are opportunities to create efficiencies over the next three years and that the gains from these will be invested into Southland's roads. "All savings gained will be put back into roading network," he said.

### Cost savings for townships

Area engineer Josh Webb said the alliance has been in place for two years and has been rolled over for another three years.

"This has given us the certainty to be able to look at the township maintenance activities and remodel the services for rubbish bin collection, street litter, kerb cleaning, playground and cemetery inspections," Mr Webb said.

The alliance management team, made up of Fulton Hogan and Council engineers, decided to double its rural cyclic crews, basing a two-person crew from Riverton, and creating a dedicated urban position based in Winton to service all townships.

*Cost savings have been able to be made in the Central Alliance area through the flexibility of the alliance contract.*

The old model was two cyclic trucks and rural/urban operators working part-time based in Winton and Riverton and costs were high because of plant and employment costs.

"The new service should increase levels of service and reduce urban costs, and greatly increase efficiency with a more focused and dedicated role eliminating downtime. This change has allowed the management team, when setting its next full year budget in June this year, to reduce its budgeted 12 month expenditure in townships by one third."

The revamped urban cyclic model is into its second month. The basis of the model is a dedicated urban staff member collecting rubbish on Mondays and Fridays in all the Central area towns and carrying out all other duties on Tuesday, Wednesday and Thursday.



## ROADING CALENDAR

*Rehabilitation work began in October with about 17km of pavement rehabilitation works planned for this construction season.*

The following sites are programmed for this year:

ROADING CALENDAR	
ROAD	AREA
Brydone Glencoe Rd	Bridge No 3
Anderson Rd	Hokonui School Road
Fairfax Isla Bank Rd	Boundary Rd
Lake Monowai Road	Blackmount Redcliff Rd
Tokanui Gorge Rd Highway	Mataura River
Blackmount Redcliff Rd	Jericho Hill
Rakahouka Hedgehope Rd	Yorke Rd
Anderson Rd	Hodgkinson Rd
Rakahouka Hedgehope Rd	Miller Rd
Otautau Nightcaps Road	(Otautau Wreys Bush Road)
Wilsons Crossing	Fraser Road. Road surveyed.
Niagara Tokanui Highway	(Lamb Road)
Ohai Clifden Highway	(Orawia)
Orawia Pukemaori Road	(Ohai Clifden Road)
Ryal Bush Wallacetown Road	(Branxholme Makarewa Road)
Gropers Bush Thornbury Road	(O'Connell Road)

## Work continues on HPMVs

*The use of high productivity motor vehicles (HPMV) is increasing, with the New Zealand Transport Agency proposing more roads in Southland District be open to HPMVs.*

Council recognises the local and national benefits from HPMVs, but is also very aware of the potential for extra cost to the ratepayers, services and assets group manager Erik Barnes said.

"I have been asked to negotiate with NZTA so that HPMV risks are minimised to an acceptable level so the commercial benefits can be

realised," he said.

Council is working in a financially constrained environment for roading funding and needs to ensure that any additional impact on its roads is understood and the risks managed appropriately so no extra financial burden is placed on the ratepayers.

Council is working collaboratively with NZTA to resolve our

differences and in particular in the areas of the impact to its roading network, the acceptable level of risk, and where the funding for adverse effects will come from.

"We are committed to moving the use of HPMVs forward without undue delay but we also need to ensure we are not taking on a longterm burden for Southland," Mr Barnes said.

What we do now can make  
**a WORLD**

*of Difference*

## SOUTHLAND DISTRICT RESIDENTS MAKE A DIFFERENCE

*Southland District residents have bought into the concept of recycling since the two-bin recycling and rubbish service began earlier this year.*

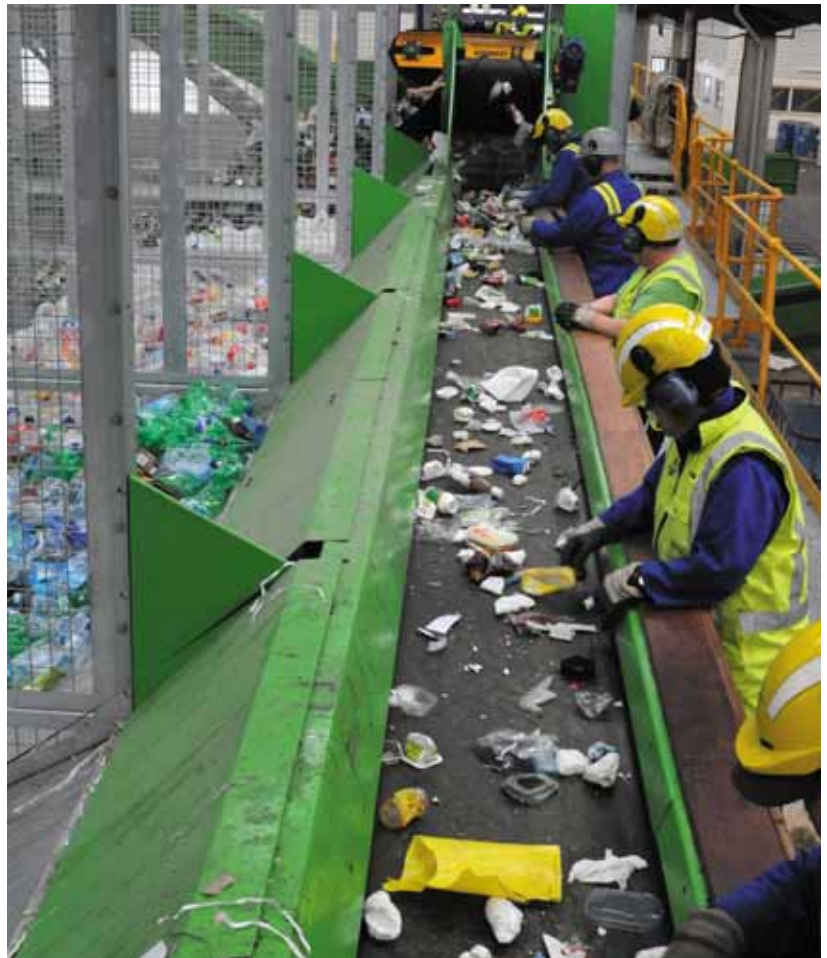
At a recent meeting with contractors, staff commented on the big improvement in the quality of recycling from the District and thanks should go out to all those who have embraced the new service.

Communities such as Riverton and Te Anau which had had a few teething problems had settled down and were going well.

On average 35 tonnes of recyclables are being collected every week from the District, which means 35 tonnes less going to landfill. With the holiday season coming up, Council would like to remind holiday home owners to be aware of the new recycling and rubbish requirements.

Details of recycling dates and what can go in the yellow and red bins are available on the WasteNet website [www.wastenet.org.nz](http://www.wastenet.org.nz), at Southland District Council area offices or by ringing 0800 732 732.

"It's important to be mindful of the people at the other end – they do not want to be sorting dirty nappies and other non-recyclables," Council's asset manager water and waste Ian Evans said.



### NO FUNDING FOR PROJECT

*Southland District Council will not receive any Government funding to improve drinking water supplies in the recent round of subsidies.*

Council had applied for funding for the Riverton water supply project but received a letter turning its application down, group manager services and assets Erik Barnes said. "I am disappointed but not surprised. We knew Riverton was lower on the deprivation index than the cut-off, but we hoped there was still a chance," Mr Barnes said.

Riverton sits at 6.3 on the deprivation index, with only communities on 7 or above eligible for subsidies (a community with a deprivation index of 10 is the least socially and materially well-off). The Government has approved a total of \$9.4 million in subsidies to improve drinking water supplies in small communities of under 5000 people.

"These subsidies will help 18 territorial local authorities and 11 private supplies to providing safer drinking water for about 22,000 people in small, disadvantaged communities," Mr Ryall said.

Up to \$10 million is available each year until 2015 and the scheme will pay up to 85 per cent of costs. Originally launched in 2006, the Drinking Water Subsidy Scheme aims to help small communities establish or improve their drinking-water supplies. The criteria for the subsidies were changed last year amid concerns that the scheme was not targeting the communities most in need of the funding.

# DISTRICT FUNDING OF WATER AND SEWERAGE BEING DEVELOPED

*Work is continuing on the proposal to move to district funding of water and sewerage services.*

The proposal has been highlighted to Community Boards, CDAs and Water Supply Committees as part of the Southland District Council estimates process and further information will be presented to a full Council meeting in January for further consideration, after which it will also be shared with all committees.

Water and waste asset manager Ian Evans said the idea was to bring the proposal to the committees' attention and give them as much time as possible to consider their position and encourage them be part of the submission process.

"Generally the elected members were aware of the proposed move, and although a number of issues around the proposal were raised the boards were also aware that the estimates meetings were not the place to discuss this in detail," Mr Evans said.

Council will discuss the proposal in January, as well as looking at what further consultation needs to be undertaken in the run up to the LTP consultation process. This will include updating all boards and committees with the most accurate information to allow them to make an informed submission.

The proposed district funding may help to guarantee the long term viability of a number of schemes, particularly those where significant capital expenditure is required. At the moment, water and sewerage schemes are funded through a targeted rate based on the cost of each scheme and the number of units connected.

"The structure we are considering is similar to previous proposals and is based on having two rates, one for community water supplies and one for sewerage, for all connected or capable of being connected. These will be calculated based on the cost of providing the services to our entire network," Mr Evans said. Water and wastewater systems are fundamental to public health and the management of those systems is an important contributor to the environmental well-being of Southlanders

"In addition to renewing worn out assets we are also required under law to meet drinking water standards and resource consents for our sewerage schemes. This proposal will also help mitigate affordability concerns, particularly for some of our low socio-economic towns," Mr Evans said. In essence each community receives the same level of service so there is a moral argument that they should all pay the same amount for that service.

"I would encourage people to take a longer term view when considering this issue, especially when it comes time to consider renewal of worn out assets. On average our schemes generally have a life around 60 years after which time we will need to renew assets such as sewers and water mains. Some schemes are now going through the process of replacing these assets whereas others are still some time off. However people need to consider how these renewals will be funded when they reach the end of their life."

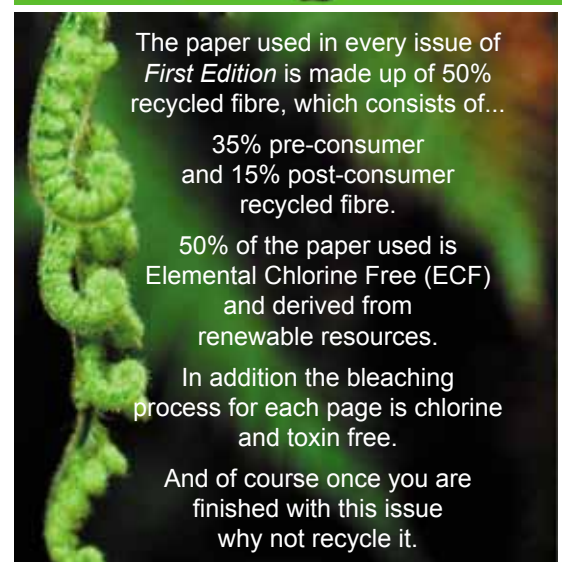
Costs are yet to be finalised but based on preliminary work so far the cost for water is estimated to be between \$270 and \$360 with sewerage likely to cost between \$280 and \$380. More work will now be undertaken to firm up these costs in time for inclusion in the Long Term Plan but current indications are that at the equivalent of around one dollar a day each for water and sewerage services, this still demonstrates value for money.



The poster features a green recycling symbol at the top. Below it, the text reads: "To make recycling as convenient as possible, many of the Council's community recycling facilities are open 24/7." The main title "Recycling Centre Opening Hours" is written vertically in large yellow letters. The list of facilities and their hours is as follows:

- GARSTON – 9 Garston-Athol Highway, open 24/7
- LUMSDEN – Oxford Street, open 24/7
- MANAPOURI – Hillside Manapouri Road, open 24/7
- MOKOTUA – 12 Clearwater Road, open 24/7
- MOSSBURN – Mossburn Lumsden Highway, open 24/7
- OHAI – 10 Richmond Street, open 24/7
- OTAUTAU – Transfer Station – Otautau Drummond Road, open Tuesday, Thursday, Saturday, Sunday 10-12 noon, (daylight saving hours – Thursday 6-8pm)
- RIVERSDALE – Community Centre Carpark, open 24/7
- RIVERTON – Transfer Station – Havelock Street, open Monday, Wednesday, Friday, Sunday 3-5pm and Saturday 11-1pm and 3-5 pm
- TE ANAU – Transfer Station – Te Anau Manapouri Highway, open 2-4pm daily (Easter to Labour weekends) and 2-6pm the rest of the year
- TOKANUI – McEwan Street, open 24/7
- TUATAPERE – King Street Domain, open 24/7
- WINTON – Transfer Station – Florence Road, open Monday, Wednesday 2-5.30pm, Friday 12-5.30pm, Saturday 1-5pm or 11-5pm (daylight saving hours) and Sunday 2-5pm or 1-5pm (daylight saving hours)
- WYNDALE – Transfer Station – Edendale Wyndham Road, open Monday 11-1pm and 4-6pm, Wednesday 4-6pm, Thursday 7-8pm (daylight saving hours only), Friday 4-6pm, Saturday 11-12.30pm and 4-6pm

At the bottom of the poster is an image of a recycling bin with the text "RECYCLING CENTRE" and "RECYCLING HERE" and the word "Recycle" in large white letters.



The background of this section is a close-up of a green, textured plant stem. The text is as follows:

The paper used in every issue of *First Edition* is made up of 50% recycled fibre, which consists of...

- 35% pre-consumer and 15% post-consumer recycled fibre.
- 50% of the paper used is Elemental Chlorine Free (ECF) and derived from renewable resources.
- In addition the bleaching process for each page is chlorine and toxin free.
- And of course once you are finished with this issue why not recycle it.



## What are Licensed Building Practitioners?

*The Licensed Building Practitioner scheme is one of the changes in the Building Act 2004 to encourage better building design and construction.*

From 1 March 2012 critical building work that is known as Restricted Building Work, must be undertaken by an LBP (Licensed Building Practitioner). Restricted Building Work (RBW) is building work (including design work) that relates to either the structure (load-bearing walls; foundations etc) or moisture penetration (roofs; cladding etc) of homes including small to medium sized apartments. It also includes the design of fire safety systems for small to medium apartment buildings.

The Licensed Building Practitioner Scheme sets out a regulated process where skilled and/or qualified building practitioners are required to demonstrate their ability to meet industry competencies in order to obtain the status of being a Licensed Building Practitioner (LBP). The scheme has seven licence classes: designers, carpenters, external plasterers, bricklayers, blocklayers, foundation specialists, roofers and site (these are on-site supervisors or managers).

The Department of Building and Housing online public register of LBPs will enable you to find a suitable LBP for your building work, or determine whether a person you are dealing with is licensed. You will also be able to identify if an LBP has been disciplined within the last 3 years. <http://lbp.dbh.govt.nz/publicregister/search.aspx>

If you are currently undertaking a building project then now is the time to check that the designer you are using is either licensed, or a registered architect or a chartered professional engineer. While Restricted Building Work does not apply until 1 March 2012, it may take many months from the time you engage a designer until your building consent plans are submitted. If your designer is not licensed on 1 March 2012 any design work that includes Restricted Building Work may either not be able to be submitted or will need to be checked by a licensed designer, registered architect or chartered professional engineer - potentially adding to the building costs.

LBPs can be identified either by producing their photo ID licence card or by checking their details against the public register.

Before undertaking any building project homeowners should ensure they are fully aware of their responsibilities. If you do not want to manage the building project yourself then you may want to consider engaging a site licensed building practitioner. A site licence shows competency in organising and managing building projects including demonstrating

knowledge of the regulatory requirements of the building and construction industry; showing technical knowledge of construction methods and practices; managing personal and providing technical supervision.

*Anyone can make a complaint to the Building Practitioners board if an LBP has:*

- been convicted of a serious offence that reflects on their fitness to be an LBP
- carried out work negligently or incompetently
- undertaken Restricted Building Work that they are not licensed to do
- carried out or supervised work that does not comply with a building consent
- held themselves out to be licensed in an area they are not
- not provided the memoranda necessary for Restricted Building Work
- obtained their licence dishonestly.

*The Building Practitioners board is unable to award compensation or reparation to a complainant but is able to:*

- cancel an LBP's licence
- suspend an LBP's licence for up to 12 months
- restrict the type of work that an LBP can do or supervise
- order that an LBP be formally reprimanded
- order an LBP to do training
- fine an LBP up to \$10,000

### DEMOLITION OF DANGEROUS BUILDINGS

**Southland District Council is inviting tenders for the demolition of a dangerous building and associated outbuildings on Stewart Island.**



**TENDER CLOSE - 3pm  
Friday, 27 January 2012**

Further information or a copy of the tender documents are available from Kevin O'Connor, 0800 732 732, [kevin.oconnor@southlanddc.govt.nz](mailto:kevin.oconnor@southlanddc.govt.nz)

Post or deliver to: The Manager Building Control

**TENDER NO.2012-2**

**SOUTHLAND DISTRICT COUNCIL**  
15 Forth Street, P O Box 903, Invercargill



## RATEPAYERS REMINDED ABOUT RATES REBATE SCHEME

*Southland District Council wants to remind Southland ratepayers that some of you may be eligible for a rates rebate for the 2011-2012 year.*

Low income earners paying rates for their home could be eligible for up to \$580 off their rates. Council is urging people who think they could be eligible to talk to Council rates staff to find out about the scheme.

The table shows eligibility for a rebate. Rates rebates are available to ratepayers who live in the property for which they are claiming the rebate. Please note that you cannot claim a rebate for a property you are not living in nor can you claim a rebate for a property where you are not the ratepayer.

For more details visit the Government's rates rebate website [www.ratesrebates.govt.nz](http://www.ratesrebates.govt.nz)

**Rates rebate income eligibility table**

Household Income	Level of Rates											
	\$1000	\$1200	\$1400	\$1600	\$1800	\$2000	\$2200	\$2400	\$2600	\$2800	\$3000	\$3200
\$21,000	\$560.00	\$580.00	\$580.00	\$580.00	\$580.00	\$580.00	\$580.00	\$580.00	\$580.00	\$580.00	\$580.00	\$580.00
\$22,000	\$560.00	\$580.00	\$580.00	\$580.00	\$580.00	\$580.00	\$580.00	\$580.00	\$580.00	\$580.00	\$580.00	\$580.00
\$23,000	\$560.00	\$580.00	\$580.00	\$580.00	\$580.00	\$580.00	\$580.00	\$580.00	\$580.00	\$580.00	\$580.00	\$580.00
\$24,000	\$465.00	\$580.00	\$580.00	\$580.00	\$580.00	\$580.00	\$580.00	\$580.00	\$580.00	\$580.00	\$580.00	\$580.00
\$25,000	\$340.00	\$473.33	\$580.00	\$580.00	\$580.00	\$580.00	\$580.00	\$580.00	\$580.00	\$580.00	\$580.00	\$580.00
\$26,000	\$215.00	\$348.33	\$481.67	\$580.00	\$580.00	\$580.00	\$580.00	\$580.00	\$580.00	\$580.00	\$580.00	\$580.00
\$27,000	\$90.00	\$223.33	\$356.67	\$490.00	\$580.00	\$580.00	\$580.00	\$580.00	\$580.00	\$580.00	\$580.00	\$580.00
\$28,000	-	\$98.33	\$231.67	\$365.00	\$498.33	\$580.00	\$580.00	\$580.00	\$580.00	\$580.00	\$580.00	\$580.00
\$29,000	-	-	\$106.67	\$240.00	\$373.33	\$506.67	\$580.00	\$580.00	\$580.00	\$580.00	\$580.00	\$580.00
\$30,000	-	-	-	\$115.00	\$248.33	\$381.67	\$515.00	\$580.00	\$580.00	\$580.00	\$580.00	\$580.00
\$31,000	-	-	-	-	\$123.33	\$256.67	\$390.00	\$523.33	\$580.00	\$580.00	\$580.00	\$580.00
\$32,000	-	-	-	-	-	\$131.67	\$265.00	\$398.33	\$531.67	\$580.00	\$580.00	\$580.00
\$33,000	-	-	-	-	-	\$6.67	\$140.00	\$273.33	\$406.67	\$540.00	\$580.00	\$580.00
\$34,000	-	-	-	-	-	-	\$15.00	\$148.33	\$281.67	\$415.00	\$548.33	\$580.00
\$35,000	-	-	-	-	-	-	-	\$23.33	\$156.67	\$290.00	\$423.33	\$555.67
\$36,000	-	-	-	-	-	-	-	-	\$31.67	\$165.00	\$298.33	\$431.67
\$37,000	-	-	-	-	-	-	-	-	-	\$40.00	\$173.33	\$306.67
\$38,000	-	-	-	-	-	-	-	-	-	-	\$48.33	\$181.67
\$39,000	-	-	-	-	-	-	-	-	-	-	-	\$56.67

**APPLICATIONS CLOSE ON 30 JUNE 2012 AND CANNOT BE ACCEPTED AFTER THIS DATE**

*For more details visit the Government's rates rebate website [www.ratesrebates.govt.nz](http://www.ratesrebates.govt.nz)*



## WAIKAWA CEMETERY MEMORIAL KIOSK OPENED

*A memorial at Waikawa Cemetery was officially unveiled by Mayor Frana Cardno recently, providing the community of Waikawa with the names of those resting in the cemetery and a history of the burial ground.*

The memorial was initiated by the Toi Tois Tokanui Lions Club and designed by Southland District Council. Mayor Cardno, Waikawa Cemetery trustees, representatives from Waikawa Museum, Lions Club members, Southland District Council staff and people from the local community gathered together to witness the unveiling of the memorial.

President of the Lions Club Bruce Lamb thanked all those involved in the Waikawa memorial, including Southland District Council for designing and provided funding for the memorial and the Lions Club members who carried out the concrete and welding work on the structure.

Since the official unveiling, Lions Club member Murray Stratford has been receiving a lot of positive feedback about the memorial. "People keep telling me what a marvellous idea it is to put a memorial like this in place," Mr Stratford said. "When families used to come to the cemetery it was difficult for them to find where their loved ones were buried. Now they don't have that problem anymore."

The Toi Tois Tokanui Lions Club is now working with Southland District Council to design another memorial for the Quarry Hills Cemetery in the new year.

## MUSIC SCHOLARSHIPS AWARDED

*Two talented musicians from Te Anau are the recipients of the O'Byrne/Jones Memorial Scholarship.*

Invercargill City Council community development manager Mary Napper said the 2011 Scholarships were awarded to Blake Kemper and Michael Sinclair.

"The scholarship is available to students of the piano wishing to pursue advanced studies. Blake and Michael plan to use the scholarship to further their musical studies at the University of Otago," Ms Napper said.

The O'Byrne/Jones Memorial Scholarship was established to recognise the work of May Jones, nee O'Byrne, who was a teacher of piano in Invercargill for 76 years.

Recipients of the O'Byrne/Jones Memorial Scholarship will receive \$1000 towards their studies and the requirement is that they must be piano players who have achieved Grade 8 on piano.

## RELIABLE WATER SUPPLY

*The second stage of the Ohai-Nightcaps water supply scheme upgrade is nearly complete, giving Nightcaps a reliable supply of water now.*

Southland District Council project engineer Bevan McKenzie said the plant had to be upgraded at a cost of \$2.2 million, excluding GST, (price includes all three stages) to meet the revised 2008 New Zealand Drinking Water Standards.

Nightcaps was also running short of water in high demand times as the pipe running between Ohai and Nightcaps was too small in diameter. "The new treatment plant for the Ohai-Nightcaps-Wairio water scheme will treat water to the new standards and with time locals will notice a higher clarity of water than they have received in the past," Mr McKenzie said.

The project including enlarging storage capacity at Nightcaps reservoir, laying a new main between Ohai and Nightcaps reservoirs and upsizing the main (80-150mm diameter), installing extra storage at the Ohai plant and construction of a new treatment plant using membrane technology to filter water. "The upgrade of Ohai/Nightcaps Scheme has been upgraded in three stages and we still have one stage left to be done, which will be completed during this current financial year.

"The Ohai Water Treatment Plant's construction and commissioning is in its final stages with the pipeline constructed last year."

Other schemes programmed for upgrades include Manapouri, which is having new UV units installed to meet standards along with programme renewals of the pumps, scada and flow meters. The cost of this work is \$145,000.

In the next four years Winton, Mossburn, Otautau, Te Anau (upgrading the sources) and Orawia also need to be upgraded, while work has started on Riverton and Tuatapere.

## New Group Manager

*An enjoyment of Southland has brought new group manager customer and financial services Bede Carran to Southland District Council.*



Mr Carran is originally from Nelson but has family connections in the south and enjoyed coming south for holidays when he was a child.

He is both a lawyer and accountant and has worked in both areas, but most recently in chartered accountancy practices in Nelson and Auckland where he worked in audit, corporate finance and business advisory services.

During his working career in Nelson, he spent some time as the independent member of the Nelson City Council's audit and risk committee.

"I think local government is a very interesting area to work in. It's a very dynamic environment in terms of responsibility," Mr Carran said.

"A huge amount of what we do has a direct effect on the community and so I believe it is very important to get to know the stakeholders and identify the issues that are important to Southland.

"I am looking forward to both my time here and the challenges ahead."

## Annual Report Adopted

*Southland District Council has received an unqualified Audit report to its 2010-11 Annual Report, which was adopted in October.*

Council chief executive David Adamson said the past year had been testing with disasters both locally and nationally. However, Southland remained resilient and Council is still in a strong financial position.

Deputy Mayor Jim Copland said the annual report epitomised Council's mission of "Working together for a better Southland." The report shows several achievements this year.

Highlights for the year included the introduction of kerbside recycling in the district and the completion of the Edendale-Wyndham water and sewerage schemes. Significant progress on projects such as the Around the Mountain Cycleway, the Stewart Island levy, and the District Plan has also been made.

Council spends a large percentage of its income on roading and this continues to be a challenge with Government



funding being reduced. Council has been trying to work smarter in its roading programme and has completed a large amount of work under budget.

Council returned a net deficit of \$1.7 million, less than the budgeted surplus of \$3 million. This was principally due to the timing of a number of projects.



# Office closures

## INVERCARGILL AND AREA OFFICES

All Southland District Council offices will close on Friday 23 December at 12 noon.

OFFICE	OPENING HOURS	OFFICE	OPENING HOURS
Invercargill	8.30am Wednesday, 4 January 2012	Stewart Island	9am Wednesday, 4 January 2012
Lumsden	11am Wednesday, 4 January 2012	Te Anau	9am Wednesday, 4 January 2012
Otautau	8am Monday, 9 January 2012	Winton	8.30am Wednesday, 4 January 2012
Riverton	10am Wednesday, 4 January 2012	Wyndham	2pm Thursday, 5 January 2012

## Transfer Stations/Refuse Sites

All SDC transfer stations will be closed on Sunday, 25 December 2011 and Sunday, 1 January 2012.

All other days are as per normal opening times.

STEWART ISLAND - Rakiura Resource Recovery Centre	
DATE	OPENING HOURS
Sunday 25 December 2011	Closed
Monday 26 December 2011	1.30pm - 4.30 pm
Tuesday 27 December 2011	Street rubbish collection
Wed 28 - Sat 31 December 2011	1.30pm - 4.30pm
Sunday 1 January 2012	Closed
Monday 2 January 2012	1.30pm - 4.30pm
Tuesday 3 January 2012	Street rubbish collection
Wed 4 - Sat 7 January 2012	1.30pm - 4.30pm

## WHEELIE BINS DATES Christmas/New Year 2011/12

There will be no collection on Monday, 26 December 2011 or Monday, 2 January 2012, so collection days for these weeks will be one day later than normal for all residents, (eg: Monday collections will be done on Tuesday; and Wednesdays will be on Thursday and so forth).

There will be a Saturday collection on both 31 December 2011 and 7 January 2012 (to empty Friday bins). Normal collection days resume on Monday, 9 January 2012.

**PLEASE NOTE:** Due to increased demand in some areas, the time during the day of the collection may vary, so please ensure that your wheelie bin is out by 7.30 am on your collection day.

*Season's Greetings*

Closure and re-opening of Council offices over the Christmas period will be advertised in local media.

During the holiday period staff will be available to respond to urgent service requests, as noted below.

You can also make requests for non-urgent services online at [www.southlanddc.govt.nz](http://www.southlanddc.govt.nz)

- Cemetery Burials
- Wandering Stock
- Infectious Diseases
- Noise Control
- Roading and Bridging Faults
- Sewerage Faults
- Water Supply Faults
- Rural Fires
- Dog and Animal Control

**A 24 hour phone service will be available on 0800 732 732**



# CHRISTMAS - NEW YEAR HOLIDAY PERIOD 24 HOUR URGENT SERVICE



## LIBRARIES

All Southland District Council Libraries will close on Friday, 23 December 2011 at 12.00 noon (or the nearest usual opening date and time). The Library Bookbus services last day will be Thursday, 22 December 2011 and will resume on Tuesday, 17 January 2012.

WINTON LIBRARY	
DATE	OPENING HOURS
Friday 23 December 2011	8.30am - 12 noon
Saturday 24 December - 3 January 2012	Closed
Wednesday 4 January 2012	8.30am - 5pm
RIVERTON LIBRARY	
DATE	OPENING HOURS
Friday 23 December 2011	8.30 - 12 noon
Saturday 24 - 27 December 2011	Closed
Wednesday 28 December 2011	10am - 4.30pm (closed 12.30 - 1pm)
Thursday 29 December 2011	10am - 4.30pm (closed 12.30 - 1pm)
Friday 30 December 2011	10am - 4.30pm (closed 12.30 - 1pm)
Saturday 31 December - 3 January 2012	Closed
Wednesday 4 January 2012	10am - 4.30pm (closed 12.30 - 1pm)
OTAUTAU LIBRARY	
DATE	OPENING HOURS
Friday 23 December 2011	8am - 12 noon
Saturday 24 December - 8 January 2012	Closed
Monday 9 January 2012	8am - 5pm
LUMSDEN LIBRARY	
DATE	OPENING HOURS
Friday 23 December 2011	10am - 12pm
Monday 26 December - 3 January 2012	Closed
Wednesday 4 January 2012	11am - 3pm
Friday 6 January 2012	11am - 3pm
Monday 9 January 2012	10am - 5pm

TE ANAU LIBRARY	
DATE	OPENING HOURS
Friday 23 December 2011	9am - 12noon
Saturday 24 December 2011	Closed
Monday 26 - 27 December 2011	Closed
Wednesday 28 December 2011	9am - 5pm
Thursday 29 December 2011	9am - 5pm
Friday 30 December 2011	9am - 5pm
Saturday 31 December 2011	10am - 1pm
Monday 2 - 3 January 2012	Closed
Wednesday 4 January 2012	9am - 6pm
STEWART ISLAND LIBRARY	
DATE	OPENING HOURS
Friday 23 December 2011 - 3 January 2012	Closed
Wednesday 4 January 2012	2.30 - 3.30pm

WYNDHAM LIBRARY	
DATE	OPENING HOURS
Friday 23 December 2011 - 4 January 2012	Closed
Thursday 5 January 2012	2pm - 5pm & 6.30 - 9pm

## Parking Infringements for Te Anau

Please note - Te Anau Parking Infringements can be paid at the Te Anau Library over the Christmas break.

Customers may only pay by cheque or cash as they do not have Eftpos facilities. Otherwise payments can be made by putting an envelope containing the money and ticket through the slot at the front of the Te Anau office or posting payments to the Invercargill office or visiting any SDC Office after the Christmas break.





## Our Southlanders... GEORGE TAYLOR

*Delving into Mokoreta's history has fulfilled Southlander George Taylor's lifelong ambition of writing a book on the locality but it has also provided the community of Mokoreta with an accurate account of their area's past that they can treasure for years to come.*

From childhood, Mr Taylor aspired to having a book published. "My grandfather wrote a book on Mokoreta 50 years ago," Mr Taylor explained. "I always knew from when I was a wee kid that because Grandad had written a book, I'd always love to write one myself."

Mr Taylor began compiling the book three months after the February 2010 Jubilee in Mokoreta. "The Jubilee Committee and I felt that the history of Mokoreta should be preserved in book form," Mr Taylor said. "I realised that there was enough information on websites and family history to write something and that it would be a

fascinating project to undertake."

The book entitled "Mokoreta" takes readers back to the inception of the area and documents the life of the Anderson family which lived on the run in Mokoreta for 20 years by themselves. The family worked hard on the land, facing the obstacle of isolation for over two decades.

As outlined in the book, the problem of isolation continued even after other settlers arrived. "When the run was subdivided and all the settlers bought their little blocks within the valley, there were issues with promises not being kept over providing roads and bridges," Mr Taylor said. Turning their backs on Mokoreta was never an option for the settlers and according to Mr Taylor: "They had no option but to carry on or walk away with nothing."

The book contains information on many families that lived and still live in Mokoreta and details industries and facilities that have come to Mokoreta and remain to the present day. The second part of the book entitled "Round Mokoreta in an Hour - yeah sure!" takes readers on a guided tour of Mokoreta. It was named this after the bus tours at the jubilee celebrations that took visitors on a speedy tour of the area within 60 minutes.

"I wanted the book to have no chapters. Right from the start that's what I had envisaged for this book because within the community the families and events, the school and the cemetery are all interconnected so I didn't want to pigeonhole everything into chapters," Mr Taylor explained.

During his research, Mr Taylor stumbled upon the unsolved story of Plot 10 in the Mokoreta Cemetery.



*George Taylor presenting Cr Paul Duffy with a copy of his book "Mokoreta" as a gift for Southland District Council Library at his recent book launch.*



According to records, the grave belonged to an unnamed child. "It fascinated me that someone could be forgotten about for 110 years," he recalled.

Together with Donna Hawkins from Southland District Council and Bruce Cavanagh from the Gore Heritage Centre, Mr Taylor set about unravelling the mystery of this forgotten soul. "We found out who this little girl was and she was a ten year old working as a domestic on a farm in Mokoreta," he said.

The girl had come from Edendale where her impoverished parents had lived. She met her end on the farm after becoming ill with blood poisoning and was buried in Mokoreta. Mr Taylor managed to trace the girl's siblings and made contact with her nephew, Bill McIntyre, who lives in Winton. Mr McIntyre is planning to build a memorial headstone for Plot 10 so that the girl is never forgotten again. "I felt like I had adopted her for a while," Mr Taylor said. He chose this intriguing tale as his favourite story in the book.



Bill McIntyre from Winton visiting the grave of his aunt who had rested in an unmarked grave at "Plot 10" for 110 years until research into Mokoreta Cemetery for George Taylor's book identified who she was.

It was discovered that other plots at the cemetery were incorrectly recorded so Mr Taylor went about updating these records to ensure they were accurate for the future. "I'm really pleased that I've been able to do this and families are happy that we were able to clear up all the confusion," he said.

Even before beginning research for his book, Mr Taylor has always been involved with the district and believes that getting involved in community projects is second nature for people from small communities such as Mokoreta.

*"Everybody in a community such as Mokoreta pitches in," Mr Taylor said. "I've always been a proud Southlander and I think I share the qualities that most Southland people have."*

As well as sitting on the local board of trustees and volunteering at regular working bees, Mr Taylor has also been involved at committee level in the wider Wyndham district in tennis and rugby clubs and is a member of the Wyndham Lions' Club.

Local people from Mokoreta rallied around Mr Taylor when he undertook this project, offering information, stories and photographs galore for the book. The project was funded by Southland District Council, Lotteries Commission, Venture Southland and the Mokoreta Jubilee Committee.

"The community was totally supportive," said Mr Taylor. At the book launch, which took place recently, Mr Taylor was overwhelmed with the large attendance and recalled that his pen ran out of ink because of signing so many books for people.

Mr Taylor's immediate plans are to spend time on his farm rather than heading straight into another time consuming project. However, he does have plans to take pen to paper soon again. "I'd love to write another book, I really enjoyed it," he said.

After looking at Mokoreta's past for so long, Mr Taylor believes that the outlook is positive for Mokoreta's survival for years to come.

"Mokoreta has definitely got a future. As a farming area, it never dries out. It'll carry on as a farming district for a long time to come," he said. "Mokoreta will have its place as a really productive little community. We can take a lot of pride in that and be pretty pleased with ourselves."

For those wishing to purchase George Taylor's book "Mokoreta", you can contact him directly at 03-2064255 or email [gandrtaylor@farmside.co.nz](mailto:gandrtaylor@farmside.co.nz).



# A Dog is for LIFE...

*It may be an age-old saying but the motto that a dog is for life, not just for Christmas serves as an important reminder for those who are about to welcome a new four legged friend into their lives this festive season.*

Animal control officer Paul Bell has witnessed the sad reality that when the Christmas tree is taken down and the lights are switched off for another year, the cute puppy that created such joy on Christmas day can very quickly become a burden on a family.

"I've seen it time and time again. People get dogs around Christmas time and by March or April the novelty has worn off and they're sick of their new pet," Mr Bell said.

In these unfortunate cases, it is ultimately the dog that ends up suffering as a result of a lack of the family's foresight. "You should treat your dog like you want to be treated yourself. A dog has a life span of at least ten years so you have to plan and prepare to dedicate the next ten years and more to the animal," Mr Bell said.

For those families out in the district who genuinely would like to open their abode to a new dog this Christmas, Mr Bell is supportive of dogs going to new homes but he advises: "Make sure you buy the correct dog to suit your family."

In order to do this, several factors should be taken into consideration when selecting the right dog for your home. These include taking into account the size of your property to cater for the animal and whether you have a secure area for the dog to play in.

Your availability to look after and train the dog should also be considered. "A dog's early learning begins at six months so dedicated time to training the animal should be carried out from this point onwards," Mr Bell said. "Dogs mature at different rates depending on their breed so it's essential to know what rate the dog you want will mature at and whether or not this suits your lifestyle."

Dogs are also a financial commitment and the cost of buying the dog is the first of many payments that you will invest into your furry friend. Food, vaccinations and vet bills are among the costs that will accumulate to a tidy sum throughout the dog's lifetime.

"A dog can bring much joy and happiness to a family and there are plenty of dogs out there that deserve to be looked after by good people. I would encourage potential owners to carry out a lot of research into their prospective animal first in order to make sure that the dog is a good fit for their family and their future," Mr Bell said. "If you do this, you will have a friend and family member for life."

So if you're still interested in becoming a dog owner at Christmas, or any time of the year, visit [www.animalcontrol.org.nz](http://www.animalcontrol.org.nz) for more information on your responsibilities of owning a dog.

## NEONATAL PERIOD - Birth to 12 Days

Early development & reflexive behaviour period.



*Puppy can't hear or see well, stays close to mother and littermates. Breeder provides warm environment.*

## AWARENESS PERIOD - 21 to 23 Days

Primary socialisation begins.

*Puppy is able to use senses of sight and hearing. Learning begins and it is a time of very rapid sensory development, a stable environment is crucial.*

*It is important not to overload them, radical changes in the environment must be avoided.*



*It is essential that the puppy remains with the litter and the mother.*

*Each day introduce a new surface such as concrete, linoleum, wood, carpet, matting, lawn, etc.*

## TRANSITIONAL PERIOD - 13 to 20 Days

This is the time to introduce novel stimuli.



*Eyes open, puppy can hear, begins to walk in a wobbly fashion and responds to taste and smell. A good time to introduce puppies to friendly cats. It is important to pick up the pups daily, talk to them, and spend a few minutes with each one individually.*

# not just for Christmas



## CANINE SOCIALISATION - 23 to 49 Days

Secondary socialisation period - learning he's a dog.

*This period is especially important for the development of a stable emotional temperament.*



*Puppy learns species specific behaviour that makes him a dog (biting, chasing, barking and body posturing). Puppy accepts discipline and submissive postures from the mother.*

*Learns not to bite too hard and develops a pack hierarchy through play. Begin positive training sessions at 5 weeks.*

## HUMAN SOCIALISATION - 7 to 12 Weeks

Into a new home with a human family.



*From 12-16 weeks of the puppy's life, his basic character is set by what he is taught.*

*This will apply especially to his attitudes toward people and toward his ability to serve them the very best he can.*

*Take into account puppy's physical limitations and short attention span.*

## THE HUMAN IMPRINT PERIOD

*Anything that frightens the puppy during this period will have a more lasting effect than if it occurred at any other time.*



*Keep training fun, positive and use short sessions. Gentle guidance and management are essential, set your puppy up to succeed, this kind of mindset will enable you to be successful, as you continue to socialise your puppy.*



## FREE MICROCHIPPING

for all dogs living in the Southland District Council Area...



AREA	FEBRUARY	MARCH	APRIL
EENDALE FIRE STATION	Thursday 9 4.30 - 5pm		Thursday 12 4.30 - 5pm
INVERCARGILL OFFICE	Tuesday 7 11am - 12 noon	Tuesday 6 11am - 12 noon	Tuesday 3 11am - 12 noon
LUMSDEN RAILWAY STATION		Thursday 1 5 - 5.30pm	
NIGHTCAPS -- FIRE STATION			Thursday 12 4 - 4.30pm
OHAI -- FIRE STATION	Thursday 16 4 - 4.30pm		
OTAUTAU OFFICE		Saturday 3 11 - 11.30am	
RIVERSDALE - ANDREWS TRANSPORT	Thursday 2 5 - 5.30pm		Thursday 5 5 - 5.30pm
RIVERTON OFFICE	Saturday 4 11 - 11.30am		Saturday 7 11 - 11.30am
TE ANAU OFFICE (AT REAR)	Thursday 9 5 - 5.30pm		Thursday 5 5 - 5.30pm
TOKANUI FIRE STATION	Thursday 9 3 - 3.30pm		Thursday 12 3 - 3.30pm
TUATAPERE - OLD RAILWAY STATION		Thursday 8 4 - 4.30pm	
WINTON OFFICE	Tuesday 3 3 - 3.30pm	Tuesday 6 3 - 3.30pm	Tuesday 3 3 - 3.30pm



# NEED TO ANALYSE PROJECTS

*There has been a lot of publicity regarding the decision by the Department of Conservation to open up for public consultation the proposal for a private tunnel through New Zealand's internationally acclaimed World Heritage area within the Fiordland and Mount Aspiring National Parks.*

By the time this article goes to print another proposal regarding the monorail link from Queenstown to Te Anau Downs will also be in the public domain for consultation.

Southland District Council, in partnership with Venture Southland, has done a lot of work looking at the advantages and disadvantages of various options for transport to Milford Sound.

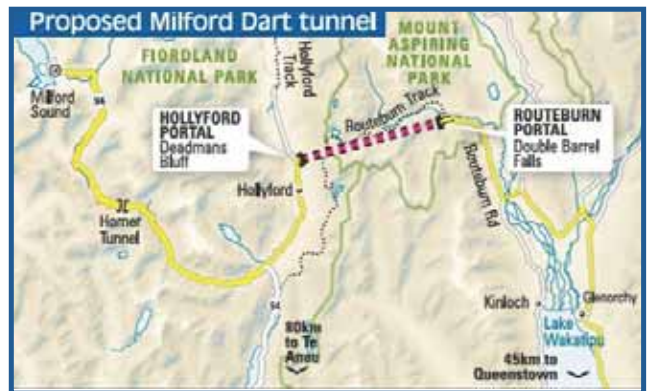
Key issues that need to be taken into consideration include environmental effects, public health, access and mobility, safety and personal security, economic development, affordability, compliance with legislation policies and relevant plans, whether the option enhances visitor experiences, the impact on traffic flows, sustainable investment, economic and employment benefits, and this is to name just a few. Each one of these needs to be considered at a local, district, regional and national level.

Detailed analysis of the Milford Dart tunnel proposal finds it delivers positive outcomes in very few if any of the above boxes. The tunnel is inconsistent with the Conservation Act, the Fiordland and Mount Aspiring National Park management plans, as well as general policy about national parks.

Bypassing the Eglinton Valley will do nothing to enhance visitor experiences and could bring about changes in the New Zealand tourism strategy as it could significantly reduce situation stays within New Zealand as well as the daily spend. The existing Milford Road is recognised as one of the world's most picturesque tourist routes and is certainly seen as a key experience in travelling to Milford.

The tunnel proposal will deliver tourists into the Hollyford Valley which will impact on the intrinsic nature of this area. The world-famous Routeburn track is above the proposed tunnel portal and the outstanding Hollyford track starts a few kilometres past the proposed portal. The trip to Lake Marion and the walk from the Divide to Key Summit are two other outstanding experiences upon which the tunnel proposal will impact.

The Milford Dart tunnel proposal is purely a transport utility designed to get passengers from A to B in the shortest possible time. It is not essential to use a national park for the solution



as there are plenty of other viable more sustainable options and Council believes it's important on behalf of our current residents and ratepayers as well as those in the future to oppose this proposal with vigour.

At the time of writing the full details of the Queenstown to Te Anau Downs monorail have not been disclosed. This proposal also needs close analysis and all the matters listed above need to be taken into account.


However, a preliminary assessment indicates that this proposal may offer enhanced visitor opportunities and alternatives that may align with some of the important strategies which have been developed in consultation with the community. The potential to slow the tourists down by adding new experiences and visiting opportunities could enhance our communities in a sustainable manner. The monorail may offer opportunities to leverage other activities alongside all of its terminals which could add to the visitor experience without degrading the environment.

Council believes it's important that each and every one of us look at these options and other large development proposals as they come to our notice because decisions today could impact on generations to come.

We owe it to our children and our grandchildren to study, analyse and reflect to ensure the best long-term decisions are made for our local, district, regional and national communities.



**WINNER**  
The winner of the iPod nano was Ms Hannah Walker



Thank you to everyone who participated in our online website survey. There was a great response and all feedback will be used for developing our future online presence.

## VINCENT ELECTED ON TO WALLACE COMMUNITY BOARD



*Tony Vincent of Otautau is the new Wallace Community Board member after a by-election which closed early November.*

“Residents in the Wallace Community Board area were asked to vote in the by-election in November and there was a voter return of 33.67%,” electoral officer Virginia Dillon said.

Two candidates, Otautau residents Peter Gutsell and Tony Vincent, were put forward for election. Mr Vincent won after receiving 540 votes compared to 200 for Mr Gutsell.

The by-election was held to fill the extraordinary vacancy on the community board following the departure of Joanne Butterfield who resigned in late September.

Mr Vincent came into office on 15 November, but cannot act as a member of the board until he has made an oral and written declaration under the Local Government Act 2001. He was scheduled to make these declarations at the board meeting on 15 December.

## TUATAPERE GETS CHEEKY FOR A GOOD CAUSE

*When it comes to taking pride in their community, the local men of Tuatapere have proven they will go all the way to raise funds for a good cause.*

### Southern Men Working Hard



### for their community swimming pool

Calendars featuring photographs of “Southern Men Working Hard” are now on sale to raise funds for the local swimming pool in the area.

Described as “decent enough to give to the mother-in-law (just), yet down and dirty enough to bring a twinkle to the eye of that naughty aunt”, the calendar is comprised of pictures of local men who stripped at various locations to have their photographs professionally taken by Karen Johnson.

Project organiser Justin Lewis said that this novel fundraising idea was borrowed from another local township which successfully raised money from it.

“We saw Bluff do it as a fundraiser last year so we decided to contact the ladies involved in organising it,” Mr Lewis

said. “The ladies were extremely supportive of us doing the same idea in Tuatapere and helped us organise it for our community.”

Finding models to undress for the camera wasn’t too difficult and Mr Lewis recalled that the men approached “were keen to do it”.

The calendar can be purchased from local retailers in the district and it is also for sale online at [www.tuatapere.org](http://www.tuatapere.org).

“We offer discounts to those who buy the calendar in bulk and they make great Christmas presents,” Mr Lewis said. “All money raised from the sale of the calendars will be put into the pool redevelopment account to either repair or replace the roof of the swimming pool.”



## RIVERTON EVACUATION EXERCISE A SUCCESS

*At 10.45am on 7 October 2011 the Aparima College school alarm systems sounded. Luckily this was not a disaster but an exercise to test evacuation plans for a tsunami in Riverton.*



Emergency Management Southland (EMS) aims to make communities more resilient by working with them to enhance their capability to reduce any risk and to respond and recover from a significant emergency event with minimal disruption, EMS advisor Gary Tong says.

EMS staff had met with Aparima College, Riverton Primary School, Riverton Kindergarten and Riverton Day Care Centre representatives in August to discuss the need for the area to be prepared and to know what to do if there was an earthquake/tsunami.

Historical and scientific information showed the lower areas of Riverton would be inundated by a tsunami if a significant earthquake happened locally on the Puysegur Trench or from a distant source such as South America.

The consequences of a local earthquake are that a tsunami could reach coastal areas of Southland in 55 minutes so the advice is "if you feel a quake that lasts longer than 30 seconds or you find it hard to stand then you need to get inland or uphill as soon as possible," Mr Tong said.

Those at the meeting agreed that the threat was real and required a co-ordinated and controlled structure that they all knew. Earlier evacuation plans concentrated on vehicle evacuation through school buses, trucks etc. However, walking was decided on as the safe evacuation means as the supply of vehicles and the condition of roads after an earthquake could not be guaranteed.

Aparima College staff took the lead and appointed senior pupils as "wardens" to assist in any evacuation activated by a "natural alert"


or a distant tsunami warning. Staff and wardens will be trained and will be well aware of their responsibilities.

This will be an on-going school programme. Students were briefed about the plans in early October. They received information on the tsunami threat, what hazards they may expect and some of the things that they may see during an evacuation.

So on 7 October, the senior students adorned duty vests and went with their team members to the predetermined (in the evacuation plan) areas of responsibility. From there, children of all ages were directed and assisted to the safe evacuation route towards the Longwood Rest Home.

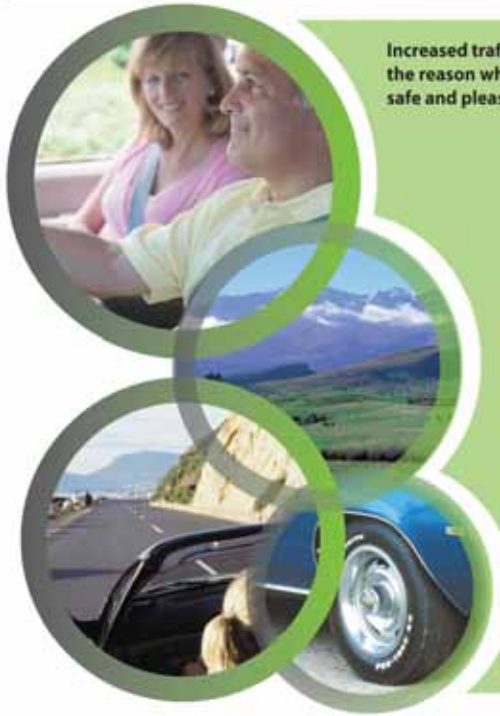
The first primary school group arrived at high ground just 14 minutes after the alarm and then 9 minutes later the last group arrived. A short briefing followed where all participants received a pat on the back and returned to school.

This exercise highlighted the fact that people working and planning together goes a long way towards creating a safe and co-ordinated response to any emergency.


0800 76 88 45
[www.civildefence.co.nz](http://www.civildefence.co.nz)

# DRIVING DURING THE HOLIDAYS

Road Safety Southland recommends the following safety tips when travelling on roads:



Increased traffic volumes, congestion, tiredness and people driving in unfamiliar environments are just some of the reason why travelling in holiday periods can be more risky. Follow these tips to help ensure your travel is a safe and pleasurable experience for you and others sharing the road with you.

**Check your vehicle** – Most garages offer safety checks for tyre tread and pressure, lights, brakes and cooling systems. A well-tuned vehicle is also more fuel efficient, so you also save money on your fuel costs.

**Packing** – Make sure everything is securely stowed when you pack your vehicle. Even small objects can become dangerous missiles in the event of a sudden stop.

**Trailers and caravans** – Check all towing attachments and make sure the couplings are compatible. Also remember to check the safety chain, trailer lights, tyres and brakes.

**Buckle up** – Don't let your holiday be marred by a tragedy simply because someone didn't buckle up. Wear your safety belt at all times and pay particular attention to children. Also secure pets or loose items.

**Speeding** – Drive within the speed limit at all times and watch carefully ahead for slow traffic or road conditions notifying a need to change the speed limit. If you are unsure SLOW DOWN.

**Fatigue** – If going on a long trip make sure you get a good nights sleep beforehand. Avoid driving late at night and stop to take a power nap if you feel sleepy.

**Cellphones** – Reading or sending text messages while driving is illegal. All drivers must not use a hand-held phone, unless the device is completely hands-free or mounted securely to the vehicle – and touched infrequently and briefly.

**Alcohol** – If you're attending a social function and intend to drink leave your vehicle at home or nominate a sober driver before you go out. Never get in a car with a driver who has been drinking.

Road Safety Southland wishes you a Happy and Safe holiday

roadsafety  
southland



## RECOGNITION OF OUR FIRE FIGHTERS

*The inaugural Southern Rural Fire Authority 2011 Awards Ceremony was held recently in Winton, recognising the hard work and commitment from rural fire fighters and volunteers involved in the fire force.*

Chief Executive of the Southern Rural Fire Authority Mike Grant said the night was a great success and highlighted the hard work carried out by fire fighters throughout Southland.

“While we’ve always acknowledged people who have achieved certain milestones, we’ve never really celebrated them in the past so this is an opportunity to put people up the front and say you’ve done a really good job,” Mr Grant said.

Although the fire fighters have never looked for praise publicly, Mr Grant believes the fire fighting community deserves recognition.

“Fire fighting becomes part of the day to day of what we do but I think we need to take a step back and we need to celebrate people’s achievements. We’re certainly going to make the awards night an annual event from now on.”

NZQA national certificates, crew leader completion certificates, fire depot awards and individual recognition awards were presented on the night.



*Sue Larson accepting a fire depot readiness award for DOC Stewart Island.*

# STEWART ISLAND'S VISITOR LEVY TO BE REALISED IN THE NEW YEAR

*2011 has been a long but overall worthwhile year for those involved in pushing through the Stewart Island/Rakiura visitor levy.*

When the select committee report on the Southland District Council (Stewart Island/Rakiura Visitor Levy) Empowering Bill was released, it stated that Parliament had approved the visitor levy and set the wheels in motion for the levy to become law. Although this is yet to take place, senior policy analyst Wayne Heerdegen does not envisage any major hold-ups in 2012.

"Now that the electoral fun and games are over, there doesn't seem to be any impediments in way of Parliament make-up that will delay the process. The second reading will take place in the new year when Parliament decides to place it on the agenda," Mr Heerdegen said.

Once this date is set, the Bill has procedural stages to go through before finally becoming law. "At the conclusion of the second reading, the Bill is debated by the whole house. After this debate, the Bill is read in Parliament a third and



last time and is sent to the Governor General for signing. Once signed, the Bill becomes an Act and is enforceable law," Mr Heerdegen explained.

The Stewart Island/Rakiura visitor levy is set to help fund the infrastructure used on the island by the thousands of short-term international and domestic tourists that visit every year. When enforced, Council will formally receive and spend the revenue generated from the proposed levy on behalf of Stewart Island/Rakiura community and will be working with the tourism industry and the Community Board to administer the levy when the legislation is passed.

After conducting a thorough economic analysis of the consequences the levy will have, Mr Heerdegen believes that it will not impact on tourists travelling to Stewart Island. The amount the levy will cost visitors is yet to be determined.

## Wyndham and Districts Historical Museum Brochure



*A brochure has been designed for Wyndham and Districts Historical Museum, providing visitors to the museum with background information on the various exhibitions that make up Wyndham's fascinating past.*

Stepping into the museum is taking a step back in time. Over 5,000 documents, photographs and artefacts make up the memorabilia of Wyndham and Districts Historical Museum. The township's deep rural roots are displayed through artefacts relating to dairy farming, sheep shearing and dairy factories.

Funded by Southland District Council, the brochure details the museum's main attractions such as the "Hair Work Bouquet", a portrait of the Hon. James Alexander Robertson Menzies, the incredible matchstick creation of 41 Ferry Street and the infamous Wyndham Sampler.

The brochure was designed by Southland District Council's graphic designer Gloria Eno.

# Ohai Railway Fund Committee allocates grants



*The Ohai Railway Fund Committee allocated \$18,900 worth of grants for educational and organisational purposes at its recent meeting.*

Educational grants totalled \$7,200 and organisational grants totalled \$11,700. The approved grants for the November 2011 round were as follows:

## EDUCATIONAL APPLICATIONS

Bianca Indra Allan	\$1,000	Kelly Jean Day	\$300	Ruben Stewart Marshall	\$700 *
Nathan Gregory Bokser	\$1,000	Katie Ellen Greene	\$750	Kelsey Margaret Paterson	\$1,000
Alfie Hugh Broughton	\$1,000	Joshua Arthur Mangos	\$750	Ashlee Maureen Whipps	\$700

*\* Grant since declined by Mr Marshall*

## ORGANISATIONAL APPLICATIONS

Aparima Playgroup	\$1,500	Nightcaps Playcentre Playgroup	\$1,000
Nightcaps Golf & Bowling Club	\$6,000 plus GST	Takitimu United Netball Club	\$2,000

*All funding had to be obtained for the above projects before the grants were released.*

Takitimu Scout Group also received \$1,200



*The Rakiura Environment Centre was officially re-opened by the Stewart Island/Rakiura Community & Environment Trust (SIRCET) recently.*

Approximately 35 guests attended the re-launch event, including the SIRCET trustees, local people from the community and sponsors of SIRCET's Sponsor-a-Hectare programme.

Located in the township of Halfmoon Bay, the environment centre has become a focal point on Stewart Island. It is based in rent-free premises thanks to the generosity of Dil and Cath Belworthy of Glowing Sky Merino Clothing.

"The centre provides environmental and conservation information for the public and locals," SIRCET's secretary and project administrator Alina Thiebes explained.

New display panels in the environment centre feature information on Stewart Island's unique flora and fauna, the threats posed by new pests to the area and details on how the Stewart Island community is proactively protecting its environment through several ongoing projects.

The panels were designed by Southland District Council's Donna Hawkins and Gloria Eno.

"We've received really good feedback on the information panels and also on the whiteboards which display the latest pest and bird monitoring results and details on upcoming events," Ms Thiebes said.

SIRCET is a non-profit organisation which was formed in 2002 by local people on Stewart Island who are dedicated to protecting and enhancing the environment and their community.

The SIRCET trustees are thankful to their sponsors, supporters and local and visiting international volunteers who have contributed to the success of the environment centre to date.



# ENVIRONMENTAL HEALTH



## CHECK WATER QUALITY BEFORE DIVING IN

*Southlanders are being encouraged to be water savvy this summer so they can decide where it's safest to swim or gather shellfish.*

Southland District Council is working with Environment Southland and Public Health South to assist the public avoid potential health risks from contaminated water at beaches and rivers where Southlanders traditionally spend their summers. From December to March, Environment Southland monitors bathing water quality at 13 sites around the coast and 11 sites on river and lakes.

When the results indicate a potential health risk, Council will issue a public warning. However everyone needs to learn to recognise warning signs so they can decide for themselves what kinds of water activities are safe in any particular area.

While the lower reaches of most of Southland's major rivers can be unsuitable for swimming at times, they may still be fine for boating or angling. And equally, beaches or estuaries that are ideal for boating may not be safe for collecting shellfish. Rivers which people generally consider to be pristine should always be treated with some care.

Warning signals include intensive farming in the surrounding catchment area, industries immediately upstream, recent intensive rainfall and the colour of the water. If the water is murky - if you can't see your toes - there is a higher risk that the water is polluted. On the coast, it's preferable to avoid beaches near stream outflows, stormwater outfalls, areas where there is a large concentration of buildings with septic tanks or with possible runoff from intensive farming. It's also best to avoid gathering shellfish for at least five days after periods of heavy rainfall.

Environment Southland's website [www.es.govt.nz](http://www.es.govt.nz) reports the most recent results from monitored freshwater and coastal recreation sites, and indicates how suitable they are for swimming.

## BE WISE AT HOLIDAY PARTIES

*Many of us will indulge in a few drinks during the holiday season. Here are some facts to test yourself on to see how much you know about alcohol and the rules around it....*

### TRUE OR FALSE

You can only sell alcohol if you are over 18 years of age.....

False - If you are under 18 you can work in a supermarket and sell alcohol. The situation is different for pubs, restaurants, BYOs and off licences. If a premise has a restricted designation under the Sale of Liquor Act 1989 then no-one under 18 can be there unless they are employed to serve a meal, clean, remove or repair equipment. In a supervised area a person under 18 can be employed to sell alcohol.

You get drunk quicker if you mix your drinks.....

False - Alcohol is alcohol. A standard drink of beer, wine or spirits contains the same amount of alcohol, the difference is in the amount you drink not in the type of alcohol.

People can get addicted to alcohol.....

True - if the usual amount of alcohol no longer gives you the same effect it may be a sign you are developing a tolerance for alcohol. This could mean you could be on the way to developing a serious problem with alcohol.

Alcohol harms more people than any other drug.....

True - Alcohol and tobacco kill more people than cocaine, heroin and any other illegal drug combined.

Once your hangover wears off alcohol no longer affects you body.....

False - Alcohol can do major damage to your digestive system. It can hurt your heart, liver, stomach and other critical organs. It can also potentially shorten your life.

A cold shower and hot drink will sober someone up.....

False - Nothing sobers you up but time. You may be clean and awake but you are still drunk. On average it takes the body one hour to process one standard drink.

# TE ANAU MANAPOURI COMMUNITY CONCEPT PLAN

*The Te Anau Manapouri Community Concept Plan has been released following extensive public consultation on issues and priorities that involve the community.*

"The community concept plan is not a statutory document but rather a vision document for the development of the community," explained Venture Southland's community development planner Diana Zadravec.

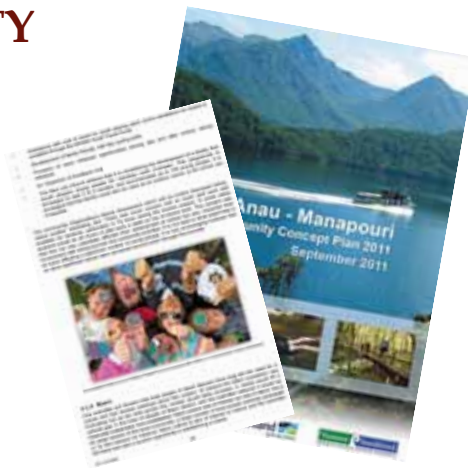
As part of the concept planning process, a review of the inaugural Te Anau Fiordland Community Concept Plan took place to ascertain what changes had been made since the initial planning stages in 2000. The community visions for Te Anau and Manapouri have remained mostly unchanged with the focus still placed on retaining the natural beauty of Fiordland.

"The aim of the concept planning process is to provide local communities with the opportunity of identifying ideas, initiatives and priorities for the development of their area into the future. Priorities of the community are put first," Ms Zadravec said.

The plan focuses on proposed community services, initiatives, facilities and amenities, as well as promotion and economic development opportunities for the Te Anau and Manapouri townships.

"Documents like this are a valuable resource that can be used to help community boards, organisations and even businesses make decisions. What is implemented from the document is entirely up to the community," Ms Zadravec said.

The Te Anau and Manapouri community believes that prosperity will be achieved through preserving the natural environment, economic



opportunities, employment, high quality education, community facilities and housing.

"Although there has been significant development in the area over the past number of years, the quality of life and sense of community remains high," Ms Zadravec said. "The plan identifies the most important asset to Fiordland being its people who possess a passion for the environment and their community."

Copies of the Te Anau Manapouri Community Concept Plan are available at the Te Anau Council office. Alternatively, the concept plan can be requested from Venture Southland or can be downloaded from [www.southlandnz.com](http://www.southlandnz.com)

## RESEARCH REPORT AVAILABLE

*Strengthening Parenting in Southland is a regional parenting project, which involves 24 locally-based community and volunteer and central government agencies working together to develop a regional parenting strategy and associated regional charter for children (ages 0-24).*

The Centre for Research on Children and Families at University of Otago was contracted in 2011 to develop a specific parent and caregiver-focussed questionnaire based on the collective ideas of the focus group. The questions were designed to find out the opinions of parents and caregivers about the availability of support and resources, key concerns about parenting, the current pressures on families, and how the community can better strengthen families across Southland.

Throughout September 2011, Versus Research of Hamilton surveyed 753 parents and caregivers across Southland. The results of this research work which were released on 1 November included the following recommendations:

- Build on the positive aspects of parenting in the region through local and regional strategies which consider how parents can be supported.
- Ensure 'grass roots' support is available for all parents in the region.
- Provide support for parents through collaborations with school, early childhood education centres and childcare centres.
- Develop support systems and information packages specifically for fathers.

- Ensure those in remote areas can access parenting support services and that communication between service providers and clients is clear.
- Explore ways to identify and provide support parents experiencing high levels of stress.
- Identify ways in which to support those struggling with financial pressures.
- Investigate ways to support teenagers and parents of teenagers.

A copy of the report is available on the Our Way Southland website at [www.ourwaysouthland.org.nz](http://www.ourwaysouthland.org.nz)

The next phase of the research work will be focus groups of parents/caregivers and children and young adults, which be coordinated by the Centre for Research on Children and Families, University of Otago. The focus group work will examine in greater detail key issues identified during the telephone/internet survey work, and will be undertaken from November 2011.

The final results of the research work with parents/caregivers, children, young adults, and agencies will form the basis of the regional parenting strategy which will be developed from February 2012.



## HAPPY 21ST TE ANAU LIBRARY

*Te Anau Library celebrated its 21st birthday recently, marking a milestone for the community service that has become an integral part of the township.*

No 21st is complete without a birthday bash and Te Anau Library was no exception. Along with Mayor of Southland Frana Cardno, the local community was invited to celebrate the occasion at a party in Te Anau which was thoroughly enjoyed by all those who attended.

Award winning children's book writer Kyle Mewburn was a special guest at the celebrations and read extracts from his books to the large audience. Children came to the party dressed up as their favourite book characters and had the opportunity to enter a competition that involved designing a book cover. They also enjoyed the entertainment and music on offer at the event.

An impressive birthday cake was made by Distinction Hotel chef John Pugh to mark the occasion and party-goers enjoyed food on the village green.

The celebration was an opportunity for those involved in the library's success to reflect on the role that the library has played in the community for the last 21 years. The formation of the library was instigated by a committee called "Friends of the Library" and since then it has grown into an invaluable service cherished by the local community.

Chair of the committee Marilyn Hunter said that the birthday party was a great success. "We're always looking for ways to get children interested and enthused by the library and the birthday was a good way to do it," Mrs Hunter said.



The committee's dedication to the library has never dwindled and there are a number of original members still serving on the committee. "We have supported the library in many ways and provided many extras for library users," Mrs Hunter said.

Among their tasks, the committee helps the library with book stock, computers and organising visits from well-known authors who come and read at the library and at local schools. Two recent projects have been the extension of the children's library and the setting up of the new Fiordland section. According to Mrs Hunter: "We're always looking out for ways to promote our wonderful library."

## FOOD FOR FINES AMNESTY FOR SPCA LAUNCHED BY LIBRARIES

*Southland District Council libraries launched a Food for Fines Amnesty in the lead up to Christmas which encouraged members of the public to donate pet food in exchange for their library fines being lifted.*

From the beginning of November until the middle of December, members of the public had the opportunity to donate one can of pet food for every \$5 worth of fines that they owed. District libraries manager Lynda Hodge saw the idea of exchanging food for fines in another area and thought that it was a practical way of raising funds for a charity in the weeks coming up to Christmas.

"With Southland District Council's commitment to dog registration and micro-chipping, doing something for the local SPCA seemed like a good fit for our organisation," Mrs Hodge said. "The food that has been collected will be donated to the SPCA prior to Christmas to assist with feeding abandoned pets."

The initiative was not restricted to people who had fines and staff are still happy to accept donations from members of the public who would like to contribute to the good cause. "We are happy to accept cans of pet food or bags of pet biscuits from anyone who would



like to make a donation. If someone would like to support the initiative but hasn't managed to purchase pet food, they can leave a monetary contribution with a library staff member who will organise it for them," Mrs Hodge said.

# Mobile Library Timetable

## Jan – May 2012



* denotes a public holiday									
Athol	Shop	1:00 - 3:00	Mon	*30 Jan		5 Mar		2 Apr	30 Apr
Balfour	Tavern	9:30 - noon	Tues	24 Jan	21 Feb	20 Mar		17 Apr	
		6:00 - 8:00	Tues		7 Feb	6 Mar		3 Apr	1 May
Blackmount	School	11:00 - 12:00	Mon	23 Jan	20 Feb	19 Mar		16 Apr	
Colac Bay	Foreshore	12:30 - 2:00	Thurs		9 Feb	8 Mar		5 Apr	3 May
Dacre	School	11:30 - 12:30	Fri		10 Feb	9 Mar		*23 Apr	4 May
Drummond	Tavern	3:30 - 5:00	Thurs		2 Feb	1 Mar	29 Mar	26 Apr	
Edendale	Car Park	2:00 - 4:30	Fri	27 Jan	24 Feb	23 Mar		20 Apr	
		2:00 - 4:30	Fri		10 Feb	9 Mar		*23 Apr	4 May
Feldwick	Hall	9:30 -10:30	Mon	23 Jan	20 Feb	19 Mar		16 Apr	
Five Rivers	Hall	3:30 - 5:00	Mon	30 Jan		5 Mar		2 Apr	30 Apr
Fortrose	Picnic Area	2:30 - 4:00	Thurs	19 Jan	16 Feb	15 Mar		12 Apr	
Garston	Main Street	10:30 -11:30	Mon	30 Jan		5 Mar		2 Apr	30 Apr
Glenham	Hall	11:30 - 1:00	Thurs	19 Jan	16 Feb	15 Mar		12 Apr	
Gorge Rd	Hall	9:00 -11:30	Tues	17 Jan	14 Feb	13 Mar		*24 Apr	
Hauroko Valley	School	1:30 - 4:00	Mon	23 Jan	20 Feb	19 Mar		16 Apr	
Hedgehope	Hall	10:00 -11:30	Fri		3 Feb	2 Mar	30 Mar	27 Apr	
Longbush	Kindergarten	9:00 - 10:00	Fri	27 Jan	24 Feb	23 Mar		20 Apr	
Mokoreta	School/Hall	9:30 - 10:30	Thurs	19 Jan	16 Feb	15 Mar		12 Apr	
Mossburn	RSA	2:00 - 4:30	Tues	24 Jan	21 Feb	20 Mar		17 Apr	
		2:00 - 4:30	Tues		7 Feb	6 Mar		3 Apr	1 May
Orepuki	Main Street	2.30 - 4.00	Thurs		9 Feb	8 Mar		5 Apr	3 May
Otara	Hall	2:00 - 4:00	Wed	18 Jan	15 Feb	14 Mar		11 Apr	
Pukerau	School	9:30 - 11:30	Wed	25 Jan	22 Feb	21 Mar		18 Apr	
Rimu	School	9:00 - 11:00	Fri		10 Feb	9 Mar		*23 Apr	4 May
Riversdale	Hall	11:00 - 1:30	Wed		8 Feb	7 Mar		4 Apr	2 May
		2:00 - 5:00	Thurs	26 Jan	23 Feb	22 Mar		19 Apr	
Roslyn Bush	Playcentre	1:00 - 2:00	Fri		3 Feb	2 Mar	30 Mar	27 Apr	
Ryal Bush	Com Centre	2:30 - 4:00	Fri		3 Feb	2 Mar	30 Mar	27 Apr	
Te Tipua	School	11:00 - 12:30	Fri	27 Jan	24 Feb	23 Mar		20 Apr	
Thornbury	Shop	9:30 - 11:00	Thurs		9 Feb	8 Mar		5 Apr	3 May
Tokanui	Main Street	10:00 - noon	Wed		1 Feb	29 Feb	28 Mar		
		1:30 - 4:00	Fri	20 Jan	17 Feb	16 Mar		13 Apr	
Waianiwa	Hall	1:30 - 3:00	Thurs		2 Feb	1 Mar	29 Mar	26 Apr	
Waikaia	Hall	3:00 - 5:00	Wed		8 Feb	7 Mar		4 Apr	2 May
		11:00 - 12:30	Thurs	26 Jan	23 Feb	22 Mar		19 Apr	
Waikaka	Main Street	2:00 - 4:00	Wed	25 Jan	22 Feb	21 Mar		18 Apr	
Waikawa	Hall	10:00 - noon	Fri	20 Jan	17 Feb	16 Mar		13 Apr	
Waimahaka	School	10:00 - noon	Wed	18 Jan	15 Feb	14 Mar		11 Apr	
Wallacetown	Com Centre	9:00 - noon	Thurs		2 Feb	1 Mar	29 Mar	26 Apr	
Wendon	Hall	9:00 - 10:30	Wed		8 Feb	7 Mar		4 Apr	2 May
Wendonside	Hall	9:30 - 10:30	Thurs	26 Jan	23 Feb	22 Mar		19 Apr	
Willowbank	School	12:30 - 1:30	Wed	25 Jan	22 Feb	21 Mar		18 Apr	
Woodlands	Shop	2:00 - 4:00	Tues	17 Jan	14 Feb	13 Mar		*24 Apr	
		2:00 - 4:00	Wed		1 Feb	29 Feb	28 Mar		

Any queries, requests or renewals: please telephone the Winton Library 0800 732 542.

Note: the following areas have fortnightly visits: Balfour, Riversdale, Waikaia, Mossburn, Edendale, Tokanui, Woodlands.

Renewals can be made by email to: [wintonlibrary@southlanddc.govt.nz](mailto:wintonlibrary@southlanddc.govt.nz)

## WIN WIN WIN WIN WIN

*Were we just more interested in who won the rugby than who won the election?*

Part of our dissatisfaction is that we are looking for politicians to be something they cannot be – inspiring leaders.

It's hard to inspire when you must legislate, compromise and be Santa Claus with a tiny sack. So who are the new leaders who will inspire us to take on the challenges of today, create the community we crave?

Consider this. Up until a couple of years ago, if you wanted to be a rock star, you had to work up a demo tape and be discovered by a recording label and work your way into the industry. Now individuals have simply filmed themselves performing, put it on YouTube and become overnight stars.

Social media is a short cut to success. It can do the same for community leaders.

If your idea is compelling, the world will take it up. You don't have to be elected, or have a lot of letters after your name, you just have to be inspiring. Social media has given us a golden opportunity to build the community we desire. The power is now in our hands.

Southlanders are used to building community even without the help of social media. Hauroko Valley School lacked the pupil numbers for extra teaching hours. No use complaining to the government, the group took control of their own destiny, running a 'Stars In Their Eyes' competition that brought the whole community together and raised more than enough funds.

Imagine a world where every working bee is flooded by volunteers, where every compelling cause is funded by

*Hannah Barclay and Gerry Forde wooing the crowd at Rockin' with the Stars, a huge entertainment and fundraising hit for Hospice Southland. Photo by Corrina Housham.*



fundraising events that people knock down the door to get to, imagine every eyesore in town transformed into a work of art, every disillusioned adolescent offered a real opportunity to thrive, every issue worked through by the community!

The status quo thrives because good people do nothing. Imagine harnessing the passion of the province for winning the Ranfurly Shield and the teamwork we showed in the storm of 2010 to create the Southland of our dreams!

A social media website with just one objective – gather all proud Southlanders together and harness our passion and pride to drive community projects, create events, tackle issues, to fund and believe and create the community we crave! Bring on 2012 and [www.winwinwinwinwin.com](http://www.winwinwinwinwin.com)



*The Community comes together for the Fonterra Shout. Photo by Corrina Housham*



## A FRUITFUL FUTURE

*For those who believe that fruit growing is a thing of the past, the Open Orchard project will make you think again.*

In fact, developing fruit orchards is now very much part of Southland's future according to project co-ordinator Robyn Guyton, who believes that Southland is a "perfect fruit growing province".

The project initially began when Ms Guyton tried to grow commercial varieties of apples in Riverton which did not take to the land very well. After seeking advice from the local sawmiller, who had a 120 year old orchard, she found that the heritage varieties provided an abundance of healthy fruit. "After that, the project just snowballed," Ms Guyton recalled.

Today there are 28 schools throughout Southland that have established orchards and community orchards have been set up by enthusiastic residents who are eager to see their areas become independent fruit providers. "It's important for our communities to be self-reliant like we once were, especially in times of emergencies when we need supplies of local food," Ms Guyton said.

The Open Orchard project aims to bring a diverse range

of old healthy heritage fruit trees back in to Southland communities. By collecting varieties from the remnants of Southland's old orchards and farms and then grafting them, the varieties can be saved into the future via an "orchard library" which catalogues the multiple types of fruit.

The heritage varieties were brought over by the colonial settlers and have histories from all over Europe after being passed on through grafting for generations.

There are also numerous Southland originals including the "Dipton Red-burst" which are unique to the area. Ms Guyton is working with experts in Europe, the US and Australia to identify additional varieties in Southland.

The long-term plan is for Southland to become a "diverse, secure environment" that will preserve its heritage varieties of fruit. "People are really behind this project and are realising how special the origins of fruit varieties really are," Ms Guyton said. "It's also a lovely way to pass the resources and skills of fruit growing onto the next generation."



### CEO RESIGNS

*Venture Southland chief executive Jeff Troon resigned due to health reasons in November.*

Venture chairman Wayne Harpur said Mr Troon left Venture on 7 November, after being the chief executive since its inception 11 years ago.

"The Venture directors would like to acknowledge and thank Jeff for all his hard work and efforts in developing Venture from the beginning," Mr Harpur said.

"During Jeff's time at the helm, Venture Southland has had successes in enterprise, tourism, community and cultural

development, as well as a myriad of social and educational wins, all of which benefit the whole Southland region."

Southland District Mayor Frana Cardno recognised Mr Troon's long and distinguished career with the Southland District Council and its predecessor, the Southland County Council.

"Jeff was instrumental in ensuring that Southland County Council had a firm grasp on its engineering and roading responsibilities in the early part of his career and was one of the key drivers in ensuring the 1989 amalgamation of the county and the borough councils into Southland District Council went smoothly," Mrs Cardno said.

Both Mayor Cardno and Mr Harpur thank Mr Troon for his loyalty and service over the past 40 years and wish him good health in the future.



Southland District Council's radio show *First Word* has been on the airwaves since August, providing listeners with an opportunity to tune in and hear all the latest Council information first.

"The show has been going from strength to strength," communications officer and show presenter Grace Campbell said. "Word is getting out in the district about the programme and we're receiving feedback from listeners who tune in fortnightly."

Radio Southland 96.4FM is a community station based in Invercargill and is Southland's only locally-owned community access radio station. The station prides itself as being a genuine local voice of Southland and an asset to the community.

As well as being broadcast on Radio Southland, the show is available as a podcast on the Southland District Council website. "The great thing about streaming or downloading the show is that it allows maximum flexibility for people to listen when they want to rather than having to follow a station's programming schedule," Ms Campbell said.

Since the show began back in August, interviewees have included Mayor of Southland Frana Cardno, Cr John Douglas and chief executive David Adamson. Topics such as rates rebates, freedom camping, libraries and fire safety have also been aired, providing listeners with information

from those within Council who specialise in the area they are being interviewed about.

The show has also covered local events that took place in and around the district within the last few months such as the Taste of Southland Festival and the Burt Munro Challenge. "It's important that the show features heavy and light topics to keep it varied for the listener," Ms Campbell said. "I'm looking forward to broadcasting from events in the district next year such as at the Southern Field Days."

First Word is aired every second week on Thursdays at 2pm on Radio Southland 96.4FM. On alternate weeks, the show from the week previous will be replayed to give you another opportunity to listen in. First Word is taking a break for Christmas but will be returning to the airwaves in February 2012.

You can listen to First Word's previous shows on Southland District Council's website at [www.southlanddc.govt.nz/first-word](http://www.southlanddc.govt.nz/first-word).

**Southland District Council** launches Facebook page

Southland District Council has joined the world of social media and has launched an official Facebook page. This will provide Council with an additional way of communicating the latest Council news and information with its ratepayers as well as those with an interest in the district.

Southland District Council's page will contain up to date information about the district, its communities and photographs of Southland scenery. It also gives members of the community an opportunity to share their feedback with Council.

The page will be monitored and updated daily by Council staff.

**CONTACT DETAILS**

**All Offices & Inquiries... 0800 732 732**

**Fax ..... 0800 732 329**

**District Libraries ..... 0800 732 542**

**Rural Fire Permits ..... 0800 773 363**

**Email ..... [sdcsouthlanddc.govt.nz](mailto:sdcsouthlanddc.govt.nz)**

**Website ..... [www.southlanddc.govt.nz](http://www.southlanddc.govt.nz)**

15 Forth Street, PO Box 903, Invercargill 9840