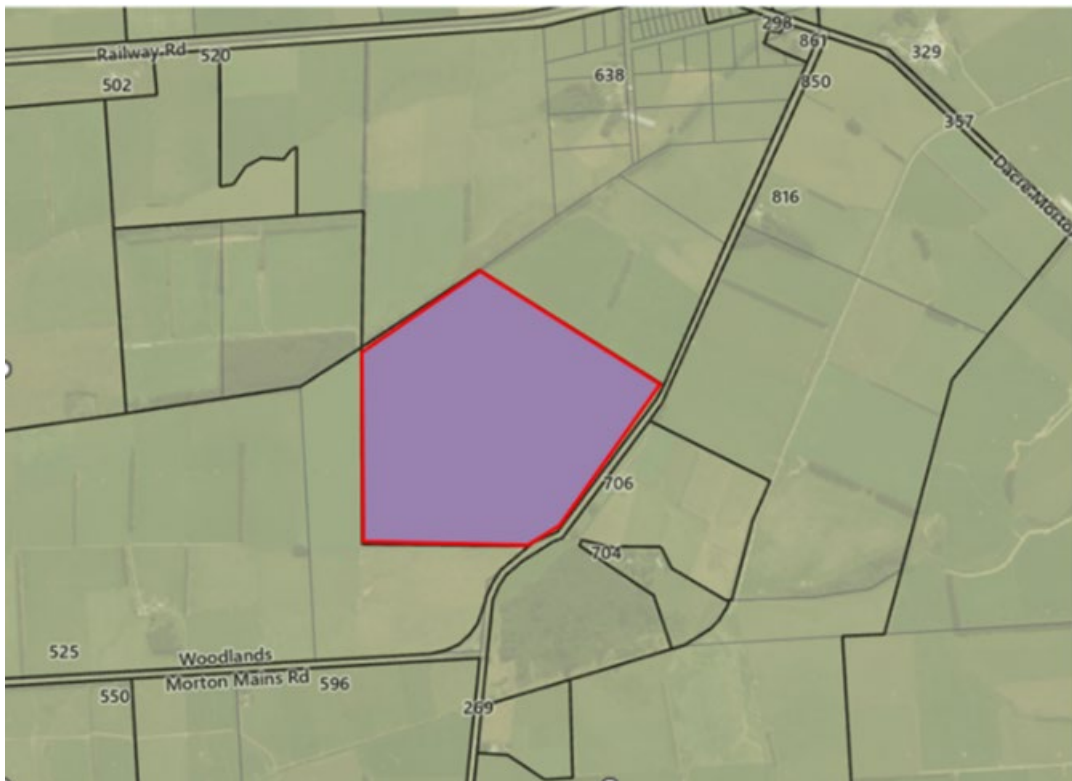


**APPENDIX B – Proposed changes to Southland District Planning Map and Provisions (Tracked Changes)**

**PLANNING MAP**

Amend Planning Map to show site known as 729 Woodlands Morton Mains Road rezoned from General Rural Zone to General Industrial Zone and as follows (deleted zoning ~~struck through~~):



## PART 3- AREA SPECIFIC MATTERS GIZ – GENERAL INDUSTRIAL ZONE

The changes proposed to existing provisions and the insertion of new provisions are presented in [blue text](#) - new text [underlined](#) and deleted text ~~struck through~~

### GIZ — General Industrial Zone

The General Industrial Zone provides an appropriate location for **industrial activities** to develop and operate, as it has a higher tolerance for the adverse environmental **effects** typically generated by **industrial activity**. The co-location or cluster of **industrial activities**, within the General Industrial Zone, can ensure that adverse **effects** of like activities are contained within a defined area and that appropriate separation from more **sensitive activities** is achieved. The Zone provides operating certainty for new and existing **industrial activities** and can reduce the likelihood of **land** use conflict, where **industrial activities** may not be compatible with neighbouring **land** uses. It can also provide for the efficient use and development of transportation and **infrastructure** networks. Non-**industrial activities** within the General Industrial Zone should be avoided and are provided for in other Zones elsewhere in the District.

#### Objectives

##### GIZ-O1

**Subdivision, land** use and development within the General Industrial Zone occur in an integrated and sustainable manner.

#### Policies

##### GIZ-P1

Recognise the benefits of locating **industrial activities** within the General Industrial Zone.

Explanation: The General Industrial Zone provides specifically for **industrial activities**. The co-location or cluster of **industrial activities** can mitigate adverse environmental **effects** by confining the activities within a defined area. It can also enable effective provision of transport and infrastructural networks, designed to accommodate the impacts of **industrial activities**. These factors can enable **industrial activities** to develop and operate in an efficient and effective manner without being unduly restricted and in turn, support the socio-economic well-being of the District.

##### GIZ-P2

Recognise and provide for the growth and development of **industrial activities** within the General Industrial Zone, whilst avoiding, remedying or mitigating adverse **effects** on the **environment**.

Explanation: While **subdivision, land** use and development in the General Industrial Zone can generate positive socio-economic **effects**, **industrial activities** can also give rise to adverse environmental **effects**. Processes and operations associated with **industrial activities** can generate **noise, dust**, traffic, and waste and adversely affect the **amenity** of surrounding areas. While the General Industrial Zone has a higher tolerance for adverse environmental **effects**, activities must still be carried out in a manner that avoids, remedies or mitigates these **effects**. In some cases, [concept, precinct or monitoring plans are applied to certain sites to manage site-specific effects. implementation of robust management and monitoring plans may be appropriate](#). The Zone must also achieve integration with the wider **environment** and activities located on the interface with other Zones and should take account of any adverse **effects** on **adjoining** areas, including the provision of appropriate buffers or separation to reduce environmental **effects**. The implementation of urban design principles should also be considered. [GIZ-P3](#)

Avoid the establishment and operation of **noise sensitive activities** in the General Industrial Zone.

Explanation: **Industrial activities** can generate a range of adverse environmental **effects** including higher levels of **noise, dust** and traffic movement than is experienced elsewhere in the District. The establishment and operation of activities unduly sensitive to the **effects** of **industrial activity**, or **noise sensitive activities**, within the General Industrial Zone, should be avoided to avoid conflict between these **land** uses.

## Rules

**Note:** District-wide rules

The following district-wide sections of the District Plan may apply in addition to any relevant General Industrial Zone Rules to activities undertaken in the General Industrial Zone. If one or more of the district-wide rules is breached, the activity will require consent in respect of those rules:

- EM - Energy and Minerals INF - Infrastructure
- CL - Contaminated Land
- WASTE - Waste
- HAZS - Hazardous Substances
- HH - Historic Heritage
- ECO - Ecosystems and Indigenous Biodiversity
- PA - Public Access
- SUB - Subdivision
- ASW - Activities on the Surface of Water
- FIN - Financial Contributions
- NOISE - Noise
- SIGN - Signs
- TEMP - Temporary Activities

GIZ-R1	Permitted Activities	
	The following activities are permitted in the General Industrial Zone:	<b>Activity Status when compliance not achieved:</b> DIS
	1. Industrial Activities (excluding offensive trades), Rural Service Activities and Service Stations that comply in all aspects with the General Industrial Standards.	
	2. Activities on <b>Council Reserves</b> provided that any activity specifically complies with an <b>approved management plan</b> .  <b>Note:</b> Any activity on a reserve will still require authority from the administering body responsible for managing the reserve. This rule overrides specific Zone and Overlay requirements and all general standards.	<b>Activity Status when compliance not achieved:</b> DIS
	3. <a href="#">Industrial Activities, Rural Service Activities and offensive trades limited to blood or offal treating, bone boiling or crushing, gut scraping and treating, solid waste disposal, storage, drying or persevering of bones, hides, hoofs or skins and tallow melting in the Blue Sky Precinct that comply with:</a>  <a href="#">a. the relevant GIZ-PREC1 Performance Standards; or</a> <a href="#">b. the relevant General Industrial Performance Standards.</a>	<b>Activity Status when compliance not achieved:</b> RDIS for non-compliance with <a href="#">GIZ-R1.3.a.</a>  <b>Matters over which discretion is restricted:</b>  1. <a href="#">The matters set out in the relevant GIZ-PREC1 Performance Standard.</a>  <b>Activity Status when compliance not achieved:</b> DIS for non-compliance with <a href="#">GIZ-PREC1-R1.3.b.</a> and <a href="#">GIZ-PREC1-PS6.</a>
GIZ-R2	Discretionary Activities	
	Activities not provided for by GIZ-R1, GIZ-R3, <a href="#">GIZ-PREC1</a> or Performance Standards - General Industrial Zone are <b>Discretionary Activities</b> .	<b>Activity Status when compliance not achieved:</b> N/A
GIZ-R3	Non-Complying Activities	
	The following activities are <b>Non-Complying Activities</b> :	<b>Activity Status when compliance not achieved:</b> N/A
	1. <b>Noise Sensitive Activities.</b>	
	2. <b>Commercial Activities.</b>	<b>Activity Status when compliance not achieved:</b> N/A

Performance Standards — General Industrial Zone

All activities within the General Industrial Zone shall comply with the following general standards:

<b>GIZ-PS1</b>	<b>Earthworks</b>	
	<p><b>1. Earthworks</b> The following standards apply when carrying out <b>earthworks</b> for any activity such as constructing new <b>buildings</b> and relocating <b>buildings</b>, construction of <b>roads</b> and accessways to <b>building sites</b>, <b>subdivision</b> lots, parks and parking areas. These standards do not apply, however, to <b>road</b> maintenance activities within the legal <b>road</b> and activities associated with the maintenance of a <b>waterbody</b> or stormwater control and to the removal of and replacement of underground petroleum storage tanks.</p> <p><b>Earthworks</b> shall not:</p> <ul style="list-style-type: none"> <li>a. be undertaken on slopes of more than 12°.</li> <li>b. be undertaken within 20 metres of a <b>waterbody</b>, including <b>wetlands</b> and <b>coastal water</b>.</li> <li>c. disturb more than 1,000 m<sup>3</sup> of <b>land</b>.</li> <li>d. alter the existing <b>ground level</b> by more than 1 metre.</li> </ul>	<b>Activity Status when compliance not achieved: DIS</b>
<b>GIZ-PS2</b>	<b>Maximum Height</b>	
	1. <b>Maximum Height</b> <b>Buildings</b> and <b>structures</b> shall not exceed 12 metres.	<b>Activity Status when compliance not achieved: DIS</b>
<b>GIZ-PS3</b>	<b>Height in Relation to Boundaries</b>	
	1. <b>Height</b> in Relation to Boundaries For <b>sites adjoining</b> the General Residential Zone, the <b>building</b> shall meet the <b>height</b> recession requirement for the General Residential Zone in relation to the relevant boundary. This shall not apply to <b>road</b> boundaries.	<b>Activity Status when compliance not achieved: DIS</b>
<b>GIZ-PS4</b>	<b>Yards</b>	
		<b>Activity Status when compliance not achieved: DIS</b>
	<b>Table 20 — GIZ Yards</b>	
	<b>Location</b>	<b>Minimum Yard</b>
	Where a <b>site</b> adjoins a State Highway or a Regional Arterial <b>Road</b> as listed in SCHED5	12 metres on the boundary with the State Highway or a Regional Arterial <b>Road</b>
	Where a <b>site</b> adjoins any other <b>road</b>	7.5 metres on the boundary with the <b>road</b>
	Where a <b>site</b> adjoins any other zone without the intervention of a <b>road</b>	7.5 metres on the boundary with the other Zone
<b>GIZ-PS5</b>	<b>Screening</b>	
	1. <b>Screening</b> An <b>industrial activity</b> shall provide effective screening from any <b>site</b> zoned General Residential, General Rural or within a Commercial Precinct that is <b>adjoining</b> or opposite (across a <b>road</b> ). The screening shall comprise of either a densely planted buffer of vegetation capable of growing to at least 3 metres in <b>height</b> or a solid fence or wall between 1.8 metres and 2 metres in <b>height</b> .	<b>Activity Status when compliance not achieved: DIS</b>
<b>GIZ-PS6</b>	<b>Lighting and Glare</b>	
	1. <b>Lighting and Glare</b> (with the exclusion of Stewart Island/Rakiura)	<b>Activity Status when compliance not achieved: DIS</b>

	<p>All exterior lighting shall be designed, located and at all times directed, screened, adjusted and maintained to ensure that:</p> <ul style="list-style-type: none"> <li>i. The spill of light from artificial lighting (excluding street lights and traffic signals) onto any other <b>site</b> shall not exceed 10 lux (horizontal and vertical) when measured at or within the boundary of any other <b>site</b>.</li> <li>ii. All outdoor lighting is directed away from <b>adjoining properties</b>.</li> </ul> <p>2. Lighting and Glare within the General Industrial Zone on Stewart Island/Rakiura</p> <p>All exterior lighting shall be designed, located and at all times directed, screened, adjusted and maintained to ensure that:</p> <ul style="list-style-type: none"> <li>i. The spill of light from artificial lighting (excluding street lights and traffic signals) shall not exceed 10 lux (horizontal and vertical) when measured at or within the boundary of any other <b>site</b>.</li> <li>ii. All outdoor lighting is directed away from <b>adjoining properties</b>.</li> <li>iii. All fixtures shall be <b>fully shielded</b> with no light spill being permitted above the horizontal plane. iv. Artificial lighting colour is to be 'warm white' (being equal to or less than 3000K correlated colour temperature only).</li> </ul>				
<b>GIZ-PS7</b>	<b>Concept and Precinct Plans</b>				
	<p>1. Concept Plans</p> <p>Activities undertaken in those areas identified as being subject to the Edendale Dairy Plant Development Concept Plan, Stewart Island/Rakiura Industrial Zone Concept Plan or Winton Industrial Development Concept Plan shall be undertaken in accordance with the District Plan unless they have specific provisions within of the relevant concept plan contained in sections DEV1, DEV2 and DEV3. For the avoidance of doubt, if the activity does not comply with the provisions of the relevant concept plan, a resource consent application in accordance with the concept plan provisions shall be applied for.</p> <p><a href="#">2. Precinct Plans</a></p> <p><a href="#">Activities undertaken in the Blue Sky Precinct shall be undertaken in accordance with the District Plan unless they have specific provisions within of the precinct plan contained in section GIZ-PREC1. For the avoidance of doubt, if the activity does not comply with the provisions of the precinct plan, a resource consent application in accordance with the precinct plan provisions shall be applied for.</a></p>	<p><b>Activity Status when compliance not achieved:</b> <b>DIS</b></p> <p><a href="#">DIS for non-compliance with GIZ-PS7.1.</a></p> <p><a href="#">RDIS for non-compliance with GIZ-PS7.2.</a></p>			
<b>GIZ-PS8</b>	<b>Noise</b>				
	<p>1. <b>Noise</b></p> <p>Except as provided in NOISE-R3 and NOISE-R4 to NOISE-R11, <b>noise</b> from all activities shall not exceed the following limits:</p>	<b>Activity Status when compliance not achieved:</b> DIS			
	<b>Table 21 — GIZ Noise Limits</b>				
	<b>When Measured at the Boundary of Any Property Zoned:</b>	<b>Day Time (7.00 am - 10.00 pm inclusive)</b>	<b>Night Time (All other times)</b>		
		<b>LAeq (15 min)</b>	<b>LAF, max</b>	<b>LAeq (15 min)</b>	<b>LAF, max</b>
	General Industrial Zone	65 dB	90 dB	55 dB	80 dB

	<p><b>Note:</b> The day time <b>noise</b> limits are intended to provide <b>amenity</b> for outdoor activities. Night time <b>noise</b> limits are intended to allow for sleep <b>amenity</b>. Where an activity shares a boundary with another Zone the activity must comply with the more restrictive <b>noise</b> limit.</p>	
<b>GIZ-PS9</b>	<b>Signs</b>	
	<p>1. <b>Signs</b> Compliance with the relevant <b>sign</b> standards as set out in SIGN - Signs.</p>	<b>Activity Status when compliance not achieved: DIS</b>
<b>GIZ-PS10</b>	<b>Transportation Standards including Access</b>	
	<p>1. Transportation Standards including Access All activities shall comply in all aspects with the provisions set out in the Southland District Council Subdivision, Land Use and Development Bylaw 2012 - relating to car parking numbers, dimensions, access, loading and manoeuvring.</p>	<b>Activity Status when compliance not achieved: DIS</b>

## Blue Sky Precinct

The purpose of the Blue Sky Precinct is to recognise the regionally significant large-scale meat processing facility located at 729 Woodlands Morton Mains Road. GIZ-PREC1 is designed to provide for the site’s unique operational needs, while appropriately managing the environmental effects associated with the facility. This means that the site-specific provisions are intended to:

- enable the implementation of innovations, new technologies and new processes and designs which improve efficiencies and minimise any adverse environmental effects respective locality; and
- provide certainty for neighbouring communities and ensure that the effects of activities on the environment are managed. It is noted that adverse effects such as noise generation and hazardous substances will be managed through provisions in other sections of the District Plan.

The provisions of the General Industrial Zone and Blue Sky Precinct should be read in conjunction. The General Industrial Zone provisions set the general direction for operations of the site as an industrial site. Meanwhile, the Blue Sky Precinct provisions allow for site-specific management in accordance with the Blue Sky Precinct Rules and Plan.

## Blue Sky Precinct Rules

<b>GIZ-PREC1-R1</b>	<b>Traffic Generation</b>	
The following activity is a <b>Permitted Activity</b> :	1. Traffic generation that does not exceed 606 vehicle movements per day.	<b>Activity Status when compliance not achieved:</b> RDIS
<b>GIZ-PREC1-R2</b>	<b>Traffic Generation</b>	
The following activity is a <b>Restricted Discretionary Activity</b> :	1. Traffic generation that exceeds 606 vehicle movements per day.	<b>Matters over which discretion is restricted:</b> <ol style="list-style-type: none"> <li>1. The effects of the activity on the safety, efficiency and effectiveness of the transport network, including consideration of cumulative effects with other activities in the vicinity, and construction associated with the activity.</li> <li>2. The type and intensity of vehicle movements using the road transport network and how this may adversely impact maintenance requirements.</li> <li>3. Whether additional traffic generation increases the use of the road beyond what is expected for its status.</li> <li>4. Outcomes and recommendations in the Integrated Transport Assessment provided with the application.</li> <li>5. Financial contribution matters set out in FIN-R1.</li> </ol> <b>Note:</b> <ol style="list-style-type: none"> <li>1. An Integrated Transport Assessment considering operational effects, prepared by a suitably qualified traffic specialist, must be submitted with any resource consent application under this rule.</li> </ol>

## Blue Sky Precinct Performance Standards

GIZ-PREC1-PS1	Maximum Height	
<p>1. Buildings and structures shall not exceed a height of:</p> <ul style="list-style-type: none"> <li>a. 16m above ground level in the inner building envelope.</li> <li>b. 12m above ground level in the outer building envelope.</li> </ul> <p>Except:</p> <p>Chimney stacks and vents up to 20m above ground level.</p>	<p>Matters of discretion if compliance is not achieved:</p> <ul style="list-style-type: none"> <li>1. The visual effects of the increased height on the visual amenity of the General Rural Zone.</li> <li>2. The extent to which topography and orientation of the structure on the site can mitigate the effects of the additional height of the structure.</li> <li>3. The ability to mitigate adverse effects of the additional height of the structure, including through landscaping or alternative design.</li> </ul>	
GIZ-PREC1-PS2	Maximum building coverage	
<p>1. All buildings and structures shall not exceed 30%.</p>	<p>Matters of discretion if compliance is not achieved:</p> <ul style="list-style-type: none"> <li>1. Effects on the visual amenity of the General Rural Zone.</li> <li>2. The ability to mitigate adverse effects of the building coverage, including through landscaping or alternative design.</li> </ul>	
GIZ-PREC1-PS3	Minimum setbacks for buildings, structures and outdoor storage areas	
<p>1. All buildings, structures, plant, machinery or equipment and outdoor storage areas shall be set back in accordance with PREC1 Blue Sky Precinct Plan Map and as follows:</p> <ul style="list-style-type: none"> <li>a. 100m from the Woodlands-Morton Mains Road boundary and the northeastern boundary.</li> <li>b. 50m from all other boundaries.</li> </ul> <p>Note:</p> <p>This standard does not apply to vehicle crossings, internal access ways and tracks.</p>	<p>Matters of discretion if compliance is not achieved:</p> <ul style="list-style-type: none"> <li>1. Effects on the visual amenity of the General Rural Zone.</li> <li>2. The height, bulk and location of the plant, machinery or equipment and outdoor storage areas.</li> <li>3. The extent to which the reduction in the setback is necessary due to the shape, topography or natural and physical features of the site.</li> <li>4. The ability to mitigate adverse effects of buildings, structures, plant, machinery or equipment and outdoor storage areas, including through landscaping or alternative design.</li> </ul>	
GIZ-PREC1-PS4	Landscaping requirements	
<p>1. All buildings, structures, plant, machinery or equipment and outdoor storage areas that are visible and adjacent to a General Rural zoned site, road or rail corridor shall be screened with landscape boundary planting and large-scale tree planting in accordance with the Blue Sky Precinct Plan as follows:</p> <ul style="list-style-type: none"> <li>a. 'Existing boundary planting' to be retained.</li> <li>b. 'Proposed boundary planting using native vegetation species' that reaches a minimum</li> </ul>	<p>Matters of discretion if compliance is not achieved:</p> <ul style="list-style-type: none"> <li>1. The extent to which the buildings, plant, machinery or equipment and outdoor storage areas are able to be screened from adjacent General Rural Zone sites, road or rail corridor.</li> <li>2. The extent to which partial screening or a reduction in landscaping is necessary due to the shape, topography or natural and physical features of the site or its general environs.</li> <li>3. The extent to which the site is visible from adjoining sites, and if boundary or large-scale tree planting is provided that visually mitigates the scale and bulk of buildings.</li> </ul>	



<p><a href="#">height of 3m, and a minimum width of 2m from the boundary to be retained.</a></p> <p>c. <a href="#">‘Large-scale tree planting to be retained’.</a></p> <p>d. <a href="#">‘Large-scale tree landscaping to be retained until the proposed boundary planting using native vegetation species is established’ under GIZ-PREC1-PS4b. has reached a minimum height of 3m and a minimum width of 2m from the boundary.</a></p> <p><b>Note:</b></p> <p><a href="#">This standard does not apply to vehicle crossings, internal access ways and tracks.</a></p>	<p>4. <a href="#">The extent to which the landscaping takes into account the operational, accessibility and security requirements of the site.</a></p>
<p><b>GIZ-PREC1-PS5</b></p>	<p><b>Exterior finish</b></p>
<p>1. <a href="#">The exterior of buildings and structures located in the outer building envelope shall be finished in a visually recessive colour, using low-reflective materials.</a></p>	<p>Matters of discretion if compliance is not achieved:</p> <p>1. <a href="#">Whether the change in colour palette, materials or reflectivity of buildings and structures are visually integrated to minimise adverse amenity or visual impacts on General Rural Zone sites, road or rail corridor.</a></p> <p>2. <a href="#">The extent to which topography, site orientation and layout and planting can mitigate the effects of the change in colour palette, materials or reflectivity of buildings and structures.</a></p>
<p><b>GIZ-PREC1-PS6</b></p>	<p><b>Storage and management of hazardous substances</b></p>
<p>1. <a href="#">The storage, use and management of hazardous substances shall not exceed the quantity limits and other requirements stipulated in Table 28 Hazardous Substances contained in SCHED6 and the following standards must be met:</a></p> <p>a. <a href="#">All Class 6 hazardous liquids must be stored in areas provided with secondary containment:</a></p> <p>i. <a href="#">For packages including drums: minimum 25% of the total pooling potential; and</a></p> <p>ii. <a href="#">For tanks: double skinned construction or in a bund with capacity for at least 110% of the tank volume.</a></p> <p>b. <a href="#">All Class 8 corrosive liquids must be stored in areas provided with secondary containment:</a></p> <p>i. <a href="#">For packages including drums: minimum 25% of the total pooling potential; and</a></p> <p>ii. <a href="#">For tanks: double skinned construction or in a bund with capacity for at least 110% of the tank volume.</a></p>	<p><b>Activity Status when compliance not achieved: DIS</b></p>

- |  |  |
|--|--|
| <p>c. <u>An Emergency Response Plan relating to the storage and use of ammonia in refrigeration systems will be developed and implemented in consultation with the local fire service which covers all aspects of emergency spill contingency plans. This shall include:</u></p> <ul style="list-style-type: none"><li>i. <u>assigned roles and responsibility of response personnel who are trained to detect low concentrations of ammonia;</u></li><li>ii. <u>procedures for trained staff to respond to an ammonia leak; and</u></li><li>iii. <u>procedures for site and wider community evacuation.</u></li></ul> |  |
|--|--|

Blue Sky Precinct Plan



- Legend
- Precinct
  - Setback
  - Large-scale tree planting to be retained
  - Large-scale tree planting to be retained until the proposed boundary planting using native vegetation species is established
  - Existing boundary planting to be retained
  - Proposed boundary planting using native vegetation species
  - Inner building envelope
  - Outer building envelope
  - Vehicle access point

## PART 4 – APPENDICES AND MAPS / SCHEDULES / SCHED6 – HAZARDOUS SUBSTANCES TABLE

The changes proposed to existing provisions and the insertion of new provisions are presented in blue text - new text underlined and deleted text ~~struck through~~

### SCHED6 — Hazardous Substances Table

Table 28 — Hazardous Substances Table										
Substance	HSNO sub-class and hazard classification	Substance	General Residential Zone and residential activities in all other zones	General Industrial Zone and Commercial Precincts in all zones excluding residential activities	Alliance's Site-Specific Limits per property, Industrial Site (not within 50 metres of the property boundary)			General Rural Zone excluding residential activities	Natural Open Spaces (Fiordland/Rakiura) Zone excluding residential activities and forestry and timber treatment activities	
					Lorneville (Alliance)	Makarewa	Morton Mains (Blue Sky Meats)			
Explosives	1.1 A-G, J, L Mass explosion hazard	Gunpowder and black powder	15 kg	15 kg	15 kg		<u>15 kg</u>	15 kg	0	
		Display fireworks	0	0	0		<u>0</u>	0	0	
		Industrial explosives (e.g. TNT) and all other 1.1	0	25 kg	25 kg		<u>25 kg</u>	25 kg	25 kg	
	1.2 B-L Projection hazard	All	No thresholds							
	1.3 C, F-L Fire and minor blast hazard	Smokeless ammunition reloading powder	15 kg	50 kg	50 kg		<u>50 kg</u>	15 kg	15 kg	
		Retail fireworks	No thresholds - refer to Hazardous Substance (Fireworks) Regulations 2001							
	1.4 B-G, S No significant hazard	Safety ammunition and marine flares	Retail fireworks	No thresholds - refer to Hazardous Substance (Fireworks) Regulations 2001						
			Sodium Azide, e.g. car airbag explosive charges	0 - (excluding airbags in vehicles)						
		All other 1.4	Safety ammunition and marine flares	25 kg NEQ + 15 kg reloading powder above	50 kg + 50 kg	50 kg + 50 kg		<u>50 kg + 50 kg</u>	25 kg + 15 kg	25 kg + 15 kg
			All other 1.4	No thresholds						

**Table 28 — Hazardous Substances Table**

Substance	HSNO sub-class and hazard classification	Substance	General Residential Zone and residential activities in all other zones	General Industrial Zone and Commercial Precincts in all zones excluding residential activities	Alliance's Site-Specific Limits per property; Industrial Site (not within 50 metres of the property boundary)			General Rural Zone excluding residential activities	Natural Open Spaces (Fiordland/Rakiura) Zone excluding residential activities and forestry and timber treatment activities
					Lorneville (Alliance)	Makarewa	Morton Mains (Blue Sky Meats)		
	1.5 D Very insensitive, with mass explosion hazard	All	No thresholds						
	1.6 N Extremely insensitive, no mass explosion hazard	All	No thresholds						
Gases and aerosols	2 NH (Non-Hazardous)	All	10 m <sup>3</sup>	200 m <sup>3</sup>	200 m <sup>3</sup>		200 m <sup>3</sup>	200 m <sup>3</sup>	200 m <sup>3</sup>
	2.1.1 A High-hazard flammable gas	LPG in cylinders See table below with regard to indoor storage of LPG	270 kg Total Outdoor Storage Quantity	450 kg Total Outdoor Storage Quantity	530 kg Total Outdoor Storage	450 kg Outdoor Storage	530 kg Outdoor Storage	450 kg Total Outdoor Storage Quantity	450 kg Total Outdoor Storage Quantity
		LPG propane based refrigerant in commercial refrigeration receivers or cylinders	0	50 kg	50 kg	50 kg	50 kg	50 kg	50 kg
	2.1.1A High-hazard flammable gases	Acetylene	1 m <sup>3</sup>	30 m <sup>3</sup>	150m <sup>3</sup>	30 m <sup>3</sup>	30 m <sup>3</sup>	30 m <sup>3</sup>	30 m <sup>3</sup>
		Hydrogen, methane and all other permanent gases	0	30 m <sup>3</sup>	30 m <sup>3</sup>		30 m <sup>3</sup>	30 m <sup>3</sup>	30 m <sup>3</sup>
	2.1.1 B Medium hazard flammable gases	Anhydrous ammonia refrigerant	0	140 kg	10 tonnes in approved HSNO 'type' stores	5 tonnes in approved HSNO 'type' stores	10,000 kg in refrigeration system compliant with AS/NZS 5149.2016	140 kg	140 kg
All other 2.1.1 B		No thresholds							

**Table 28 — Hazardous Substances Table**

Substance	HSNO sub-class and hazard classification	Substance	General Residential Zone and residential activities in all other zones	General Industrial Zone and Commercial Precincts in all zones excluding residential activities	Alliance's Site-Specific Limits per property; Industrial Site (not within 50 metres of the property boundary)			General Rural Zone excluding residential activities	Natural Open Spaces (Fiordland/Rakiura) Zone excluding residential activities and forestry and timber treatment activities
					Lorneville (Alliance)	Makarewa	Morton Mains (Blue Sky Meats)		
	2.1.2 A Flammable aerosol	All	20 litres	450 litres	450 litres		450 litres	450 litres	
Flammable liquids (stored aboveground in containers with individual capacity ≤450 litres) (Otherwise than in bulk; Def: <450 litres)	3.1A Liquid: Very high hazard (flash point <23°C, initial boiling point ≤35°C)	Petrol	10 litres inside <b>dwelling</b> 50 litres outside <b>dwelling</b> (No storage in metal drums)	50 litres (any storage except metal drums) 250 litres in Dangerous Goods cabinet approved to AS 1940 450 litres in approved HSNO 'Type' stores	1,950 litres in approved HSNO 'Type' stores	50 litres (any storage except metal drums) 250 litres in Dangerous Goods cabinet approved to AS 1940 450 litres in approved HSNO 'Type' stores	<a href="#">50 litres (any storage except metal drums)</a> <a href="#">250 litres in Dangerous Goods cabinet approved to AS 1940</a> <a href="#">450 litres in approved HSNO 'Type' stores</a>	50 litres (any storage except metal drums) 250 litres in Dangerous Goods cabinet approved to AS 1940 450 litres in approved HSNO 'Type' stores.	50 litres (any storage except metal drums) 250 litres in Dangerous Goods cabinet approved to AS 1940 450 litres in approved HSNO 'Type' stores.
		All other, e.g. ether	0	50 litres					
	3.1B Liquid: High hazard (FP<23°C)	All - e.g. acetone, paint spray thinners, pure alcohol	10 litres inside <b>dwelling</b> 50 litres outside <b>dwelling</b> (No storage in metal drums)	50 litres (any storage) 250 litres in Dangerous Goods cabinet approved to AS 1940 450 litres in approved HSNO 'Type' stores. Large-scale retail activities only: 1500 litres class 3.1 B & C in containers of up to 10 litres each to HSNO Gazetted Controls or such greater quantities if	50 litres (any storage) 250 litres in Dangerous Goods cabinet approved to AS 1940 450 litres in approved HSNO 'Type' stores. Large-scale retail activities only: 1500 litres class 3.1 B & C in containers of up to 10 litres each to HSNO Gazetted Controls or such greater quantities if compliant with HSNO COP 42 as appropriate	<a href="#">50 litres (any storage)</a> <a href="#">250 litres in Dangerous Goods cabinet approved to AS 1940</a> <a href="#">450 litres in approved HSNO 'Type' stores.</a>	50 litres (any storage) 250 litres in Dangerous Goods cabinet approved to AS 1940 450 litres in approved HSNO 'Type' stores.	50 litres (any storage) 250 litres in Dangerous Goods cabinet approved to AS 1940 450 litres in approved HSNO 'Type' stores.	

**Table 28 — Hazardous Substances Table**

Substance	HSNO sub-class and hazard classification	Substance	General Residential Zone and residential activities in all other zones	General Industrial Zone and Commercial Precincts in all zones excluding residential activities	Alliance's Site-Specific Limits per property; Industrial Site (not within 50 metres of the property boundary)			General Rural Zone excluding residential activities	Natural Open Spaces (Fiordland/Rakiura) Zone excluding residential activities and forestry and timber treatment activities
					Lorneville (Alliance)	Makarewa	Morton Mains (Blue Sky Meats)		
				compliant with HSNO COP 42 as appropriate					
Flammable liquids (stored aboveground in containers with individual capacity ≤450 litres) (Otherwise than in bulk; Def: <450 litres)	3.1 A plus 3.1 B - cumulative total limit	Examples of 3.1B include methanol, acetone and ethanol. Also includes automotive paint spray thinners	10 litres inside <b>dwelling</b> 50 litres outside <b>dwelling</b> (No storage in metal drums)	50 litres (any storage except metal drums) 250 litres in Dangerous Goods cabinet approved to AS 1940 450 litres in approved HSNO 'Type' stores	50 litres (any storage except metal drums) 250 litres in Dangerous Goods cabinet approved to AS 1940 450 litres in approved HSNO 'Type' stores	<a href="#">2,000 litres (any storage except metal drums)</a> <a href="#">250 litres in Dangerous Goods cabinet approved to AS 1940</a> <a href="#">450 litres in approved HSNO 'Type' stores</a>	2,000 litres in total for rural activities where separated from residence in: Drums 60 and 209L in Approved HSNO stores 250 L Max per each DG Cabinet	2,000 litres in total in: Drums 60 and 209L in Approved HSNO stores 250L Max per each DG Cabinet	
<p>It is hard to differentiate risk between 3.1 A and 3.1 B - both have flashpoints below 23°C and it is only Initial Boiling Point (IBP) trigger at 37°C that makes the difference. Some 3.1B substances present a greater hazard than petrol - for example, acetone, ethanol and methanol. The risk depends on the ignition energy required to ignite and also the different firefighting methods between polar and non-polar solvents. An ethanol fire requires an alcohol-resistant foam and methanol (racing fuel) is very toxic.</p>									

**Table 28 — Hazardous Substances Table**

Substance	HSNO sub-class and hazard classification	Substance	General Residential Zone and residential activities in all other zones	General Industrial Zone and Commercial Precincts in all zones excluding residential activities	Alliance's Site-Specific Limits per property; Industrial Site (not within 50 metres of the property boundary)			General Rural Zone excluding residential activities	Natural Open Spaces (Fiordland/Rakiura) Zone excluding residential activities and forestry and timber treatment activities
					Lorneville (Alliance)	Makarewa	Morton Mains (Blue Sky Meats)		
Flammable Liquids (stored aboveground in containers with individual capacity ≤450 litres)	3.1 C Liquid: Medium hazard (FP≥23°C, but ≤61°C)	All - e.g. paints, solvents, kerosene Jet-A1 aviation turbine kerosene	20 litres inside dwelling 50 litres outside dwelling	2,000 litres in total in: Drums 60 and 209L in Approved HSNO stores 250L Max per each DG Cabinet Large-scale retail activities only: 1500 litres class 3.1 B & C in containers of up to 10 litres each to HSNO Gazetted Controls or such greater quantities if compliant with HSNO COP 42 as appropriate	2,000 litres in total in: Drums 60 and 209L in Approved HSNO stores 250L Max per each DG Cabinet Large-scale retail activities only: 1500 litres class 3.1 B & C in containers of up to 10 litres each to HSNO Gazetted Controls or such greater quantities if compliant with HSNO COP 42 as appropriate		<a href="#">2,000 litres in total in: Drums 60 and 209L in Approved HSNO stores 250L Max per each DG Cabinet</a>	2,000 litres in total in: Drums 60 and 209L in Approved HSNO stores 250L Max per each DG Cabinet	2,000 litres in total in: Drums 60 and 209L in Approved HSNO stores 250L Max per each DG Cabinet
Flammable liquids (stored above-ground in containers with individual capacity ≤450 litres)	3.1 D Liquid: Low hazard (FP>60°C, but ≤93°C)	All - e.g. diesel, petroleum fuel oils	20 litres inside dwelling 209 litres outside dwelling	2,000 litres in total in: Drums 60 and 209L in Approved HSNO stores 250L Max per each DG Cabinet	11,000 litres in approved HSNO stores	10,000 litres in approved HSNO stores	<a href="#">11,000 litres in approved HSNO stores 250L Max per each DG Cabinet</a>	10,000 litres in approved HSNO stores	2,000 litres in total in: Drums 60 and 209L in Approved HSNO stores 250L Max per each DG Cabinet
Flammable liquids (stored aboveground in containers with individual capacity >450)	3.1 A Liquid: Very high hazard (flash point <23°C, initial boiling point ≤35°C)	Petrol	0	Certified single-skin tanks: 0 Certified double skin tanks: 2,000 litres					
		All others	0						
	3.1 B Liquid: High hazard (FP<23°C)	All- e.g. acetone, paint spray thinners, pure alcohol	0	Certified single-skin tanks: 0 Certified double skin tanks: 600 litres					



**Table 28 — Hazardous Substances Table**

Substance	HSNO sub-class and hazard classification	Substance	General Residential Zone and residential activities in all other zones	General Industrial Zone and Commercial Precincts in all zones excluding residential activities	Alliance's Site-Specific Limits per property; Industrial Site (not within 50 metres of the property boundary)			General Rural Zone excluding residential activities	Natural Open Spaces (Fiordland/Rakiura) Zone excluding residential activities and forestry and timber treatment activities
					Lorneville (Alliance)	Makarewa	Morton Mains (Blue Sky Meats)		
litres) (Tanks >450 litres)	3.1 C Liquid: Medium hazard (FP≥23°C, but ≤61°C)	All - e.g. paints, solvents, kerosene  Jet-A1 aviation turbine kerosene	0		Certified single skin tanks: 450 litres Certified double skin tanks: 2,000 litres Certified super vault tanks constructed to SWRI standards: 10,000 litres				
Flammable liquids (stored aboveground in containers with individual capacity >450 litres)	3.1 D Liquid: Low hazard (FP>60°C, but ≤93°C)	All - e.g. diesel, petroleum fuel oils	Certified single skin tanks: 450 litres Certified double skin tanks: 600 litres Certified super vault tanks constructed to Southwest Research Institute (SwRI) standards: 10,000 litres	Certified single skin tanks: 450 litres Certified double skin tanks: 2,000 litres Certified super vault tanks constructed to SwRI standards: 10,000 litres	Certified single skin tanks: 450 litres Certified double skin tanks: 2,000 litres Certified super vault tanks constructed to SwRI standards: 10,000 litres	<a href="#">Certified single skin tanks: 450 litres</a> <a href="#">Bunded single skin tanks: 5,000 litres</a> <a href="#">Certified double skin tanks: 5,000 litres</a> <a href="#">Certified super vault tanks constructed to SwRI standards: 30,000 litres</a>	Certified single skin tanks: 450 litres Bunded single skin tanks: 5,000 litres Certified double skin tanks: 5,000 litres Certified super vault tanks constructed to SwRI standards: 30,000 litres		
Waste oil (stored aboveground in containers with individual capacity >450 litres)	Not classified by HSNO	Waste oil	As above						
Flammable liquids (stored below ground)	3.1 A, 3.1 B, 3.1 C, 3.1 D	Petroleum or alcohol blend fuels	The storage of HSNO sub-class 3.1A-D requires consent as a Controlled Activity - Please refer to HAZS-R2 — Controlled Activities						
Flammable liquids (any storage)	3.2 A, 3.2 B and 3.2 C Liquid desensitised explosive: High, medium and low hazard	All	0						
Flammable solids	4.1.1 A Readily combustible solids and solids that may cause fire through	All	0	50 kg	50 kg	<a href="#">50 kg</a>	50 kg	50 kg	

**Table 28 — Hazardous Substances Table**

Substance	HSNO sub-class and hazard classification	Substance	General Residential Zone and residential activities in all other zones	General Industrial Zone and Commercial Precincts in all zones excluding residential activities	Alliance's Site-Specific Limits per property; Industrial Site (not within 50 metres of the property boundary)			General Rural Zone excluding residential activities	Natural Open Spaces (Fiordland/Rakiura) Zone excluding residential activities and forestry and timber treatment activities
					Lorneville (Alliance)	Makarewa	Morton Mains (Blue Sky Meats)		
	friction: Medium hazard								
	4.1.1 B Readily combustible solids and solids that may cause fire through friction: Low hazard	All	0	500 kg	500 kg		500 kg	500 kg	500 kg
	4.1.2 A & B Self-reactive: Types A & B	All	0	50 kg	50 kg		50 kg	50 kg	50 kg
	4.1.2 C-G Self-reactive: Types C-G	All	0	500 kg	500 kg		500 kg	500 kg	500 kg
	4.1.3 A-C Solid desensitised explosives	All	0	0	0		0	0	0
	4.2 A & B Spontaneously combustible - Pyrophoric substances: High hazard and self-heating substances: Medium hazard	All	0	50 kg	50 kg		50 kg	50 kg	50 kg
	4.2 C Spontaneously combustible - self-heating substances: Low hazard	All	0	500 kg	500 kg		500 kg	500 kg	500 kg
Flammable solids	4.3 A & B Solids that emit flammable gas when wet: High and medium hazard	All	0	50 kg	50 kg		50 kg	50 kg	50 kg
	4.3 C Solids that emit flammable gas when wet: Low hazard	All	0	500 kg	500 kg		500 kg	500 kg	500 kg

**Table 28 — Hazardous Substances Table**

Substance	HSNO sub-class and hazard classification	Substance	General Residential Zone and residential activities in all other zones	General Industrial Zone and Commercial Precincts in all zones excluding residential activities	Alliance's Site-Specific Limits per property; Industrial Site (not within 50 metres of the property boundary)			General Rural Zone excluding residential activities	Natural Open Spaces (Fiordland/Rakiura) Zone excluding residential activities and forestry and timber treatment activities
					Lorneville (Alliance)	Makarewa	Morton Mains (Blue Sky Meats)		
	4.2 A & B Spontaneously combustible - Pyrophoric substances: High hazard and Self-heating substances: Medium hazard	All	0	50 kg	50 kg		50 kg	50 kg	
	4.2 C Spontaneously combustible - Self-heating substances: Low hazard	All	0	500 kg	500 kg		500 kg	500 kg	
	4.3 A & B Solids that emit flammable gas when wet: High and medium hazard	All	0	50 kg	50 kg		50 kg	50 kg	
	4.3 C Solids that emit flammable gas when wet: Low hazard	All	0	500 kg	500 kg		500 kg	500 kg	
Oxidising substances	5.1.1 A-C Liquids and solids	All	10 litres if liquid, 10 kg if solid	200 litres if liquid, 200 kg if solid	240 litres if liquid, 240 kg if solid	200 litres if liquid, 240 kg if solid	240 L or kg	No threshold	No threshold
	5.1.1 A-C Liquids Fonterra Edendale CIP	All	No threshold						
Oxidising substances	5.1.2 A Gases	Oxygen (Except as stored and used in accordance with HSNO requirements within medical facilities)	5.5 m <sup>3</sup>	1,000 m <sup>3</sup>	1,000 m <sup>3</sup>		1,000 m <sup>3</sup>	200 m <sup>3</sup>	200 m <sup>3</sup>
		Nitrous oxide (Except as stored and used in accordance with	0	30 x 8-gram nitrous oxide cartridges for	30 x 8-gram nitrous oxide cartridges for catering purposes only		30 x 8-gram nitrous oxide cartridges for	0 except for medical	0 except for medical purposes as noted

**Table 28 — Hazardous Substances Table**

Substance	HSNO sub-class and hazard classification	Substance	General Residential Zone and residential activities in all other zones	General Industrial Zone and Commercial Precincts in all zones excluding residential activities	Alliance's Site-Specific Limits per property; Industrial Site (not within 50 metres of the property boundary)			General Rural Zone excluding residential activities	Natural Open Spaces (Fiordland/Rakiura) Zone excluding residential activities and forestry and timber treatment activities
					Lorneville (Alliance)	Makarewa	Morton Mains (Blue Sky Meats)		
		HSNO requirements within medical facilities		catering purposes only			<a href="#">catering purposes only</a>	purposes as noted	
		Chlorine	0	4,310 kg	4310 kg	210 kg	210 kg	0	
	5.2 A-G Organic Peroxide: Types A-G	All - e.g. MEKP Polyester resin catalyst	0.5 litres (hobby size)	16 litres	16 litres		16 Litres	4 litres (commercial size)	4 litres
Toxic substances	6.1 A-C Acutely toxic	Anhydrous ammonia refrigerant	0	140 kg	140 kg		<a href="#">10,000 kg in refrigeration systems compliant with AS/NZS 5149.(1-4)-2016</a>	140 kg	140 kg
		Chlorine	0	0	0		210 kg	0	0
		All other substances	0	20 litres if liquid, 20 kg if solid	20 litres if liquid, 20 kg if solid		<a href="#">20 litres if liquid, 20 kg if solid</a>	20 litres if liquid, 20 kg if solid	20 litres if liquid, 20 kg if solid
	6.1 D & E	Calcium Hypochlorite (HTH)	5 kg (Swimming pool chlorine)	200 kg	200 kg		<a href="#">1000 kg (food and dairy industry disinfectant)</a>	1,000 kg (food and dairy industry disinfectant)	1,000 kg
		All other substances	1 kg	200 kg	200 kg		20,000 litres	1,000 kg	1,000 kg
Toxic substances	6.3 A & B Skin irritant	All	1 kg	2,000 kg	2,000 kg		30,000 kg	2,000 kg	2,000 kg
	6.4 A Eye irritant	Cement, Hydrated Lime and Burnt Lime	400 kg	50 tonnes	50 tonnes		50 tonnes	30 tonnes	30 tonnes
		Calcium Chloride	5 kg	200 kg	200 kg		1000 kg	1,000 kg	1,000 kg
		All Others	1 kg	2,000 kg	2,000 kg		2000 kg	2,000 kg	1,000 kg
	6.5 A & B Respiratory and contact sensitisers	Cement, Hydrated Lime and Burnt Lime	400 kg	50 tonnes	50 tonnes		50 tonnes	30 tonnes	30 tonnes

**Table 28 — Hazardous Substances Table**

Substance	HSNO sub-class and hazard classification	Substance	General Residential Zone and residential activities in all other zones	General Industrial Zone and Commercial Precincts in all zones excluding residential activities	Alliance's Site-Specific Limits per property; Industrial Site (not within 50 metres of the property boundary)			General Rural Zone excluding residential activities	Natural Open Spaces (Fiordland/Rakiura) Zone excluding residential activities and forestry and timber treatment activities
					Lorneville (Alliance)	Makarewa	Morton Mains (Blue Sky Meats)		
		All Others	1 kg	2,000 kg	2,000 kg		2,000 kg	1,000 kg	
	6.6 A & B Human mutagens	All	1 kg	2,000 kg	2,000 kg		2,000 kg	1,000 kg	
	6.7 A & B Carcinogens	All	1 kg	200 kg	200 kg		200 kg	1,000 kg	
	6.8 A-C Human reproductive or developmental toxicants	All	0	0	0		0	0	
	6.9 A & B Substances affecting human target organs or systems	All	0	0	0		0	0	
Corrosives	8.1 A Substances corrosive to metals	All	5 litres	1,000 litres	15,000 litres*	1,000 litres	1,000 litres	5,000 litres	
	8.2 A-C Substances corrosive to skin	Cement, Hydrated Lime and Burnt Lime	400 kg	50 tonnes	50 tonnes	50 tonnes	50 tonnes	30 tonnes	
		All	5 litres	1,000 litres	15,000 litres*	1,000 litres	1,000 litres	1,000 litres	
	8.3 A Substances corrosive to the eye	Cement, Hydrated Lime and Burnt Lime	400 kg	50 tonnes	50 tonnes	50 tonnes	30 tonnes	30 tonnes	
		All	5 litres	1,000 litres	15,000	1,000 litres	1,000 litres	5,000 litres	
Corrosives	Fonterra Edendale Industrial Zone	8.1, 8.2, 8.3 CIP Chemicals	N/A	No threshold	N/A		N/A	N/A	
Ecotoxics	9.1 A-D Aquatic ecotoxics and 9.2 A-D Soil ecotoxics	All	See base Class thresholds NB: Where a substance requires resource consent and also has an ecotoxic class, the ecotoxicity shall be taken into consideration as part of Assessment Matter						

**Table 28 — Hazardous Substances Table**

Substance	HSNO sub-class and hazard classification	Substance	General Residential Zone and residential activities in all other zones	General Industrial Zone and Commercial Precincts in all zones excluding residential activities	Alliance's Site-Specific Limits per property; Industrial Site (not within 50 metres of the property boundary)			General Rural Zone excluding residential activities	Natural Open Spaces (Fiordland/Rakiura) Zone excluding residential activities and forestry and timber treatment activities
					Lorneville (Alliance)	Makarewa	Morton Mains (Blue Sky Meats)		
	9.3 A-C Terrestrial vertebrate ecotoxics	All	See base Class thresholds NB: Where a substance requires resource consent and also has an ecotoxic class, the ecotoxicity shall be taken into consideration as part of Assessment Matter						
	9.4 A-C Terrestrial invertebrate ecotoxics	All	See base Class thresholds NB: Where a substance requires resource consent and also has an ecotoxic class, the ecotoxicity shall be taken into consideration as part of Assessment Matter						

**Note:** This table must be read with the notes outlined below:

\* 15,000 litres is the maximum combined total of 8.1 A, 8.2 A-C and 8.3 A corrosives for the Alliance Lorneville **site**, excluding the cement hydrated lime and burnt lime which is provided for separately in the table.

**Notes:**

- Table 28 — Hazardous Substance Table contains maximum permitted quantity thresholds (plus, in certain cases, storage requirements) for the storage, use and management of different types of **hazardous substance**, as classified via the Hazardous Substance (Classification) Regulations 2001. To avoid confusion, maximum permitted means up to and equal to the quantity thresholds specified. The quantities vary according to Zone and/or activity type. Where the requirements set out in this table are not met, resource consent will be required under Rules HAZS-R2 — Controlled Activities and HAZS-R3 — Discretionary Activities of the District Plan.
- The classification uses the criteria and numbering as specified in the HSNO Classification Regulation 2001. All approved **hazardous substances** in New Zealand have a HSNO hazard classification. Many substances have more than one hazardous property. The activity status must be determined for each hazard classification and the most onerous requirement shall apply.
- The permitted quantity thresholds in Table 28 — Hazardous Substance Table apply per **site**, except for the General Industrial Zone and **forestry** and timber treatment activities in the General Rural Zone, where the permitted quantity thresholds apply per **hazardous sub-facility**. Where more than one activity is carried out per **site** or **hazardous sub-facility**, each **hazardous sub-facility** shall comply with Table 28, otherwise resource consent will be required under Rules HAZS-R2 — Controlled Activities and HAZS-R3 — Discretionary Activities of the District Plan.
- Where the volume or weight of a **hazardous substance** is affected by the temperature and pressure at which it is stored, the volume or weight shall be considered (for the purposes of this table) to be that present in conditions of 20°C and 101.3 kPa otherwise resource consent will be required under Rules HAZS-R2 — Controlled Activities or HAZS-R3 — Discretionary Activities of the District Plan.
- Where any **site** contains **residential activity** then the General Residential Zone thresholds detailed in the table shall exclusively apply, regardless of any other activity occurring on the **site** except for within the General Rural Zone, where the General Residential Zone thresholds apply to the residential **dwelling** and **curtilage** only.
- Dwelling** under HSNO includes the house and any **structure** attached to the house including a carport, basement garage, etc. It does include a balcony and a verandah but not a deck or patio unless roofed over.
- “Approved” means test certified as compliant with HSNO, or in some cases approved by the EPA.
- “Certified” means tanks that are issued with a Design Verification Test Certificate under HSNO by a Test Certifier if they are of a standard design e.g. service station tanks, farm tanks etc. The Design Verification Certificate is for the EPA listed Test Certified Approved Tank Fabricator’s production tanks; or; they are **site** built and subject to Engineer’s Producer Statements - PS1 and PS4’s for design, tank slab and seismic restraint e.g. Fonterra Edendale class 8 tanks and CIP Process Vessels. Both construction methods are then subject to Stationary Container Systems Certificates on **site** by another Test Certifier.

**Table 29 — Use of LPG Inside Buildings**

<b>Location</b>	<b>Max. Quantity of LPG</b>	<b>Max. size of cylinder</b>
A detached house or single storey attached <b>dwelling</b> and multi-storey attached <b>dwellings</b> up to three storeys	20 kg per <b>dwelling</b>	10 kg cylinder
Multi-storey attached <b>dwellings</b> over three storeys	10 kg per <b>dwelling</b>	10 kg cylinder
Hotels, bars, restaurants, public <b>buildings</b> , places of worship, shops, offices and laboratories not attached to a <b>dwelling</b>	10 kg per 10 m <sup>2</sup> of the indoor floor area, up to a maximum total quantity of 100 kg	10 kg cylinder
Hotels, bars, restaurants, public <b>buildings</b> , places of worship, shops, offices and laboratories that are attached to a <b>dwelling</b>	20 kg per premises	10 kg cylinder
Factories and warehouses	45 kg per 50 m <sup>2</sup> of the indoor floor area, up to a maximum total quantity of 180 kg per occupancy	45 kg cylinder

The table for the use of LPG inside **buildings** was included in EPA document HRC09001 - the Reassessment of LPG and LPG-based refrigerants. The trigger quantities are maximums and cannot be exceeded through the resource consent process (provided for information only) as prohibited under HSNO.